
THE BEE LINE



The Newsletter of the Oregon State Beekeepers Association

Volume 24, Number 9

October 1999

Northwest Corner Beekeepers Conference-Oct. 28-30 Features Dr. Hachiro Shimanuki

Dr. Hachiro Shimanuki from the USDA Lab in Beltsville, Maryland is a featured speaker at the Northwest Corner conference. He will be speaking on "Tetramycin Resistance and other Bee Disease Status" and "Beekeeping in the New Millennium." He has been a gifted researcher for more than thirty years and has much to share with us.

Dr. Shimanuki was born and raised in Hawaii. He is known to his friends and colleagues simply as "Shim." He received his bachelor's degree from the University of Hawaii and his PhD from Iowa State University where he studied honey bees and American Foulbrood under Dr. Walter C. Rothenbuhler. Upon graduation from Iowa State University in 1963, he was hired by the USDA and assigned to Laramie, WY. Then in 1966 he was transferred to Beltsville, MD as the Investigations Leader for bee diseases. Shim currently holds the title of Industry Liaison for Bees and Pollination for the USDA-ARS. Prior to his new job, he was the Research Leader of the ARS Bee Research Laboratory for over thirty years. At Beltsville, he has had many different assignments and job titles.

Dr. Shimanuki is noted primarily for his research having authored and co-authored over 160 articles and book chapters on bee disease, mites and pests of honey bees, bee nutrition and Africanized honey bees. In addition to research, he is responsible

for the Africanized honey bee identification and the bee disease diagnostic services. One of his major roles has been to serve as a technical representative for the honey bee industry in Washington with the EPA, FDA, APHIS and other Federal and State agencies, industry and academia both nationally and internationally. Shim serves as an "institutional memory" for beekeepers, extension workers, regulators and beekeepers by virtue of his thirty years of experience working with eight different National Program Leaders and two different branch chiefs for Apiculture.

He is a member of the ABF, AHPA, US Beekeepers, EAS, American Association of Professional Apiculturists, Entomological Society of America, and the International Bee Research Association (IBRA). Dr. Shimanuki has traveled widely both in the US and internationally as a lecturer, guest faculty and consultant. In addition to serving on national committees for the USDA, National Association of State Departments of Agriculture, and national beekeepers organizations, he has also served on interagency and international committees such as the Bee Pathology Commission of Apimondia, the Tri-County Committee, IBRA's Council, etc.

During his 36 years with the USDA, Shim has received a number of awards from the USDA (cont. on page 2)

WHAT'S INSIDE:

- *Fall Conference Registration Form
 - *State Fair Winners and Photos
 - *Reducing Bee Poisoning from Pesticides Booklet
-
-

Oregon State Beekeepers Association

The Bee Line is the official publication of the Oregon State Beekeepers Association and is published ten times a year. Subscriptions are included with OSBA membership.

To join the OSBA, complete the membership application in this issue and send with payment to: Phyllis Shoemake, 1702 Toucan Street NW, Salem, OR 97304

Editorial Offices: Send news, announcements, letters, comments and advertising to: Diane Varner, Editor
PO Box 123 Yamhill, OR 97148-0123
Tel. 503-662-4559 Fax 503-662-4594
e-mail Raybee@band1.bandwidth.net

©1999 Oregon State Beekeepers Association

Advertising Rates

Business Ads, per issue:

Business card size	\$ 7.50
Quarter page	20.00
Half page	35.00
Full page	100.00

Copy, art and payment must be submitted by the 15th of the month prior to publication. Contact the editor for any special requirements and mechanical information.

Classified Ads, 30 words, per issue:

OSBA members	\$ 2.00
Non-members	\$ 3.00

(cont. from page 1)

and beekeeping organizations. He is the current president of IBRA and an honorary member of the Apiary Inspectors of American and most recently voted as an honorary member of the Hawaii Beekeepers Association.

Dr. Shimanuki's current research projects include the bee parasitic mite syndrome, natural products for the control of bee diseases and pests, the small hive beetle and the development of alternative materials for control of Terramycin resistant *Paenbacillus larvae* (*Bacillus larvae*).

Glorybee Announces:
Bayer Bee Strips

for Varroa Mite control



If you are having trouble with Apistan® resistant mites, the new drug *coumaphos* is 97% effective in controlling varroa with no chance of cross resistance.

Now available in 10-packs.

Please call for information: (800) 456-7923

Glorybee is located at 120 N. Seneca Rd. Eugene, OR 97402

President's Notes

by Torey Johnson

With the bee season coming to a close or at least slowing down, it is time to start thinking about the future. What can you do to be a better beekeeper? Can you promote honey better, can you help the image of honey bees, and can you keep your bees healthier? These are all things I have asked myself and would hope you have asked yourselves, too.

Some of the answers are easy, but for some we may need to dig a little deeper. Promotion is one of the answers the general public seems to need the most. We need to talk the talk. Let people know why honey bees are needed and how beneficial they are to everyone. Take the time to give correct answers on beekeeping and defend it when needed. We must also understand the new age of small farms, city people and subdivisions. We must become better as a whole, not just individually.

Changing gears, it is time to get your conference registration forms mailed (see page 9). Our speakers are top-notch and you won't be disappointed. We should be able to see the overall reaction to the Mite-Check strips also.

The auction is set so bring your checkbooks and be ready for some fun! The new t-shirts designed to promote Pacific Northwest beekeepers will be for sale at just above cost to help promote our industry after the Conference. They will make great gifts for your customers.

I will not be running for office this year. My little girl will be walking soon and my boys are growing up fast. I'd like to thank all the people who take time out to help the OSBA. You are greatly appreciated. My special thanks to George Hansen, Phyllis Shoemake and Ray Varner.

God bless!

Notable, Quotable Honey

"The secret of my health is applying honey inside and oil outside." Democritus (lived to be 109)

Northwest Corner Conference Agenda

A registration form is enclosed. Avoid long lines at the registration table! Reserve your place now by completing the form and sending it to Bart Snyder. Make your room reservations as soon as possible. The Best Western Hood River Inn can be reached at 1-800-828-7873. *Editor's note: For room information at other motels, call the Hood River County Chamber of Commerce at 800-366-3530. Another contact is a free service called Overnight Success at 800-365-6343 that lists over 2,000 lodgings. Postal regulations prohibit non-profit groups from listing or recommending specific motels or rates.*

AGENDA

Thursday evening, Oct. 28, 1999

- 7 pm - Registration
- 7-8:30 pm Welcoming reception---mead, wine and cheese tasting social

Friday morning, October 29, 1999

- 7-8 am Registration
- 8:30 am Welcome from the OSBA President, Torey Johnson
- 8:40 am Welcome from the WSBA President, Bob Stump
- 8:50 am Conference details – Bart Snyder, OSBA Vice President
- 9am-5 pm Commercial exhibits open for inspection
- 9-10 am **“Terramycin Resistance and other Bee Disease Status”** – Dr. Hachiro Shimanuki, USDA Beltsville Bee Lab
- 10-10:20 Refreshment break
- 10:20-11:20 am **“IPM Management for Varroa”** Dr. Lynn Royce, OSU
- 11:20-11:45 am **“OSBA Research Committee Tracheal Mite Study Review”** Ray Varner, Committee Member
- 11:45 am-12:45 pm No host lunch

Friday afternoon sessions

- 1-1:30 pm **“Timing is Everything-Varroa Mite Treatment Studies”** – Jamie Strange, WSU
- 1:30-2 pm **“Drone Potency Deficit-Causes and Effects”**—Ms. Deborah Delaney, OSU

- 2-3 pm **“Russian Varroa Resistant Bees”** – Dr. Lilia DeGuzman, USDA Bee Lab, LA
- 3:15-3:45 pm National Honey Board Report – Judy Gulleon, S. Dakota Honey Producer
- 3:45-4 pm American Beekeeping Federation Report – Pat Heitkam
- 4-5 pm State/Province Business Meetings – rooms to be announced

Friday evening dinner

- 5:00-6 pm No host social hour
- 6-7 pm Banquet
- 7-8 pm **“Beekeeping in the New Millennium”** – Dr. Hachiro Shimanuki, USDA Bee Lab, Beltsville
- 8-10 pm OSBA/WSBA Benefit.Auction

Saturday morning, October 30, 1999

- 7:30-8 am Registration
- 8 am-2:45 pm Commercial exhibits open
- 8-8:15 am Announcements and drawings
- 8:15-9 am **“New Horizons: Bees, Genetics and Mites”**— Dr. Steve Shephard, WSU
- 9-10 am **“Pollination Review from OSU Honey Bee Lab”** – Dr. Mike Burgett, OSU
- 10-10:30 am Coffee break
- 10:30-10:45 Announcements and drawings
- 10:45-11:30 am **“Scavenging Airborne Bacteria Using Honey Bees”** – Dr. Bruce Lighthart, University of Montana

Saturday afternoon

- 11:30-1:30 pm Research luncheon **“Beekeeping in Armenia”** – Dr. Michael Burgett, OSU Profits from the luncheon go to the OSU Bee Lab
- 1:35-1:45 pm Announcements and drawings
- 1:45-2:15 pm **“Report on the OSBA Web Page and Pollinator’s List”** – Bart Snyder
- 2:15 – 2:45 pm Final announcements and drawings
- 2:45-3:30 pm **“Genotypes in Varroa-Some Not Too Bad, Others Awful”** – Dr. Lilia DeGuzman, USDA Bee Lab, LA
- 3:30-3:45pm Conference wrap-up – Y2K WSBA President
- 3:45-4pm Conference wrap-up – Y2K OSBA President

Northwest Beekeeping

October

- Remove Apistan strips this month (after they have been on 56 days).
- Feed all light colonies with a saturated sugar solution (two parts sugar to one part water). Don't feed poor grades of honey.
- Tilt all hives, making them 3/4" higher in the back than in the front to drain condensation out of the entrance.
- Replace summer lids with metal telescoping covers and provide ventilation space under the inner cover.
- Raise hives onto stands, off the ground. The hives should be exposed to the sun and protected from winds.
- Some Northwest beekeepers do not reduce the size of hive entrances, but if you choose to do so, do so now.
- Continue precautions against robbing.
- Store comb in a cool, dry place and use moth crystals to fumigate, not moth balls.
- Repair and store equipment.
- Make plans for next year and start equipment supply order list.

Thank you to Portland Beekeeper Association members Stephanie Barnes, David Gage, Rosemary Marshall, Ernie McCormack and Bill Ruhl, for Almanac review and suggestions, 1996.

CALENDAR OF EVENTS

- Oct. 25** Deadline for *The Bee Line*
Oct. 28-30 NW Corner Fall Conference
 Hood River. See related articles.

GLORYBEE

P.O. Box 2744 Eugene, OR 97404
 Ph: 541-689-0913 Fax: 541-689-9692
 Toll Free: 1-800-Glorybe (456-7923)
 Email - sales@glorybee.com - www@glorybee.com

BUYING ALL GRADES NEW CROP HONEY
 Call for prices

Free Bee Supply Catalog
 1-800-Glorybe (456-7923)



CROP POLLINATION HONEY



George and Susan Hansen
 30576 Oswalt Road
 Coitor, Oregon 97017
 503-824-2265

Snow Peak Apiaries

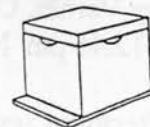
Quality Hive Products

Custom cut tops, bottoms and supers
 We buy beeswax

Franz and Audrey Yordy 34769 E. Lacombe Drive
 1-541-451-3752 Lebanon, OR 97355

RUHL BEE SUPPLY
 12713 NE WHITAKER WAY
 PORTLAND, OR 97230

503-256-4231



Bees, Beekeeping Supplies, Honey, Beeswax
Also carry Extracting Equipment, new & used!

Time to Think About Elections

Ever thought about running for an OSBA office? Check the list on page 10 for the possibilities. All positions under Officers and Regional Reps are open for anyone interested in running, or for incumbents that want to continue. If you are interested, give Phyllis Shoemake a call at 503-364-8401, or drop her a note at 1702 Toucan St. NW, Salem 97304.

HELP! Auction Items Needed

The Northwest Corner Conference is weeks away, and several requests have come in for auction items for both the silent auction and the benefit auction. All contributions to the cause are greatly appreciated. Bring your items to the Conference, or call Phyllis Shoemake at 1-503-364-8401 for more information.

BB

B Gentle Bees A Family Tradition in Northern California Good Acceptance B

B Homer Park Italian Queens B

B Top Quality - All around queens that perform well in all areas B

B Home of \$950 B

B A.I. Hygienic Breeder Queen Developed Dr. Maria Spivak B

B  50 OR MORE, SEPT. \$8.00  B

B Wooten's Golden Queens B

B 11189 Deschutes Rd. B

B Palo Cedro, CA 96073 B

B Toll Free 888-565-8439 B

B Early Build-up High Productivity B

BB



PACKAGES ARE COMING! Reserve your order NOW - we feature the New World Carnolian Project queens - rated as one of the top 3 queens in the US by the Honeybee Improvement Project!

Suckiamute Bee

503-838-2328

11260 Simpson Road, Monmouth, OR 97361

fax: 503-838-6040 • e: beetools@aol.com

WWW - <http://members.aol.com/beetools>

Check out our new Website! It has our complete catalog, used equipment, and all sorts of tips, links and information for beekeepers

BE A BETTER BEEKEEPER

Read & See EVERY MONTH

- Beekeeping Basics
- Problems Solved
- Other Beekeepers
- Newest Products
- Marketing Tips
- Great Writers
- Much, Much More!



Bee Culture

The Magazine For American Beekeeping Call 800-289-7668

For A Free Copy BE A BETTER BEEKEEPER TODAY



HONEYBEE INVESTIGATIONS

Tracheal Mite & Nosema Diagnosis:

50 Bee Tracheal Mite Test = \$12.50

100 Bee Tracheal Mite Test = \$25.00

25 Bee Nosema Test = \$10.00

Varroa Screen Included

Diagnostic Laboratory for Apiaries

(509) 639-2577 P.O. Box 163 Jan Dormaier
45289 Rd Q NE Microbiologist
Hartline, WA 99135 rjbkdorm@televar.com

Texas Chosen for Site of American Beekeeping Federation Convention – January 2000

Fort Worth, Texas will host the American Beekeeping Federation set for January 12-15. The site of the convention will be the historic Radisson Plaza Hotel, the place where President John F. Kennedy spent the night before his fateful trip to Dallas. The hotel is located on the edge of downtown Fort Worth, within an easy walk of Historic Sundance Square, a revitalized 20-block entertainment and shopping district, and the Fort Worth Outlet Center, an urban outlet mall.

The convention will open on Wednesday, January 12th. After the opening ceremonies and the keynote address, the schedule of the day will include sessions of the ABF's Special Interest Groups and the "Welcome to Fort Worth" reception.

Thursday morning, the ABF Auxiliary will have its annual breakfast meeting. After a half-day of formal sessions, the beekeepers will grab a quick lunch before heading out to Waxahachie for tours of Burlison's honey plant and Mark Brady's new extracting house, followed by a western hoe-down complete with a barbecue dinner. And, for those who may be interested, arrangements will be made to stop by some of Waxahachie's many quaint shops and antique stores.

Friday's schedule will see more of the industry's pressing issues addressed by the most-informed speakers. The country's largest beekeeping trade show will continue through Saturday noon, providing attendees an opportunity to meet those who manufacture and sell the goods beekeepers use every day. On Friday evening, the convention-goers can join an ABF group at Billy Bob's Texas, which is billed as the World's Largest Honky-Tonk; or they can enjoy an evening in Fort Worth on their own.

Saturday will be the day for the ABF's popular educational workshops, which all the attendees to choose subjects of particular interest and get more involved in a small-group setting. Saturday afternoon will be devoted to the ABF business meeting. The annual ABF Awards Banquet and

Honey Queen Coronation will cap off the day and the convention.

Timely announcements related to the convention will be sent to ABF members. Others can obtain more information from ABF, PO Box 1038, Jesup, GA 31598; phone 912-427-4233; fax 912-427-8447; email info@abfnet.org; or internet <http://www.abfnet.org>.

Beeswax Candles Class Added to American Honey Show

The Honey Show Committee has made two changes to the rules for the 2000 American Honey Show to broaden the show's appeal. The show will be a part of the American Beekeeping Federation's Fort Worth Convention, which will run Jan. 12-15.

A class has been added for Beeswax Candles, recognizing the number of beekeepers who are involved in making candles from their surplus beeswax. The candles may be dipped, molded or rolled of sheets, as long as they are 100% beeswax. As with other beeswax entries, no non-beeswax enhancement is permitted.

The entry may consist of a single candle, a pair of candles, or a group of candles. The minimum weight of the entry is 0.5 lb., the maximum is two pounds. The entry will be judged on cleanliness of wax, design and appearance, finishing details and originality.

To make room for the new class, the committee has eliminated the Half Comb Cassette class. There was insufficient interest to maintain that class.

The Honey Show Committee reminds potential entrants that the "wigwam" straight cylinder chunk honey jars formerly required for the "chunk honey" and "creamed honey" classes are no longer available for purchase. Available stock of the "wigwam" jars may be used. Alternatively, round chunk honey jars with small shoulders may be used.

The Committee also reminds entrants that they should contact the ABF Office at American Beekeeping Federation, PO Box 1038, Jessup, GA 31598 for a complete set of rules, including an entry form and an official score sheet.

New OSU Publication of Interest to Beekeepers

Dr. Michael Burgett advised that the Pacific Northwest Extension Publication "*How To Reduce Bee Poisoning from Pesticides*" has been recently updated. The sixteen-page booklet is jointly produced by Oregon, Washington and Idaho and is provided for public distribution.

Topics covered include Causes of Bee Poisoning, Bee Poisoning Symptoms, Beekeeper-Grower Cooperation, Reduction of Bee Poisoning, and Regulations. There are nine pages devoted to lists of Insecticides, Acaricides, Herbicides, Dessicants, Plant Growth Regulators and Fungicides ranging from those that are toxic to bees to those that can be safely applied. The lists also cover wild bees and bumblebees.

Publication PNW518 is available from any OSU Extension Service Office. The cost is \$1.50. Dr. Burgett has offered to provide a free copy to the first fifty interested parties that contact him. This updated publication is worth having on hand.

NHB Lists Marketing Help Sites

The National Honey Board offers three contacts for those needing help with marketing. Visit the NHB Web sites at www.nhb.org (industry) and www.honey.com (consumer), or call them at 1-800-553-7162. An official NHB Marketing Kit will be coming soon from the National Honey Board.

Visit the Food Marketing Institute's Web site at www.fmi.org. Scroll to their "FMI member and other Food Industry" link. FMI has hundreds of relevant links including associations of food products, food retailers and federal agencies.

Call the Association of Sales and Marketing Companies at 703-758-7790 for help locating food brokers that have relationships with grocery retailers in your state. Or visit their web site at www.asmc.org.

OSBA National Honey Board Report

By Joann Olstrom

Regardless of how you vote on the upcoming NHB referendum, the NHB continues until 2002. The difference it will make is in **how** it continues: a) as is if you vote NO, or b) with these changes if you vote YES.

The first change is from a 1 cent assessment on producers to a ¾ cent assessment of both producers and packers. The second change is a minimum 8% of funding will go to research on helping keep our bees alive and making production more profitable. Finally, quality assurance is an issue. We all want to get the "funny" honey off the market - those adulterated with corn syrup, etc., and the honey with other "additives" like coumaphos, etc. This would apply to both domestic and foreign honey.

I think the National Honey Board does a good job and I hope it continues. Vote!



**THE
ESSENTIAL OIL
COMPANY**

The Essential Oil Company
PO Box 206
Lake Oswego, OR 97034

**Pure Aromatherapy Grade
Essential Oils**

Great Products for Bee Keepers!


- Menthol • Peppermint
- Spearmint • Wintergreen
- Lemongrass

Mention this ad and receive an additional
10% off your first order!

Call for your **FREE** catalog today!
Phone: 800-7295912 Fax: 800-825-2985
Email: order@essentialoil.com
<http://essentialoil.com>

**HEITKAM
HONEY
BEES**

PAT HEITKAM & FAMILY
4700 FIRST AVE.
ORLAND, CA 95963
530-865-9562



*Queens, Bees,
Honey &
Pollination*

1999 State Fair Report

Once again, the OSBA booth at the State Fair was the place to be, with the bee cage and observation hives drawing big crowds. New participants this year helped boost the display. Richard Farrier of Farrier Farms also awarded three \$20 awards in the Hobbyist class for Best of Show – Comb Honey, Best of Show – Creamed Honey and Best of Show, Extracting Frames. Richard and his crew also worked very hard to set up displays in the booth. Thanks to all of you for helping once again make the OSBA proud and giving Oregon beekeepers a boost!

Now for the winners:

Bill Ruhl took the sweeps in fair awards. For extracting frames he won three blue ribbons and one red; for three observation hives he won two blue ribbons and one red; for beeswax he took the red ribbon. His five exhibits of extracted honey all took blue ribbons, and his four comb honey exhibits took three blues and one white ribbon. Congratulations!

Fred Van Natta took blue ribbons with his extracting frames and his comb honey.

Duane Hann took home a red ribbon for his extracting frame, a blue ribbon for his wax exhibit, and a red, white and blue for his comb honey. Duane also won the Ruhl Bee Supply Trophy for Hobbyists. Congratulations!

John Schoon won a white ribbon for his extracting frame.

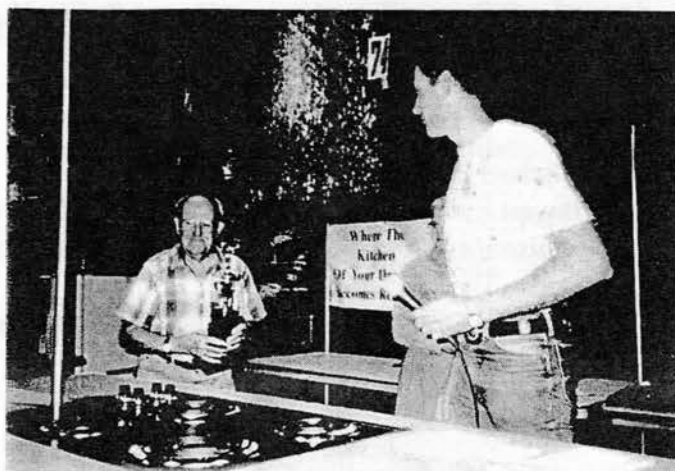
Doreen Gruenfelder got a blue ribbon for her extracted honey.

Jim Walker took a red ribbon for his comb honey.

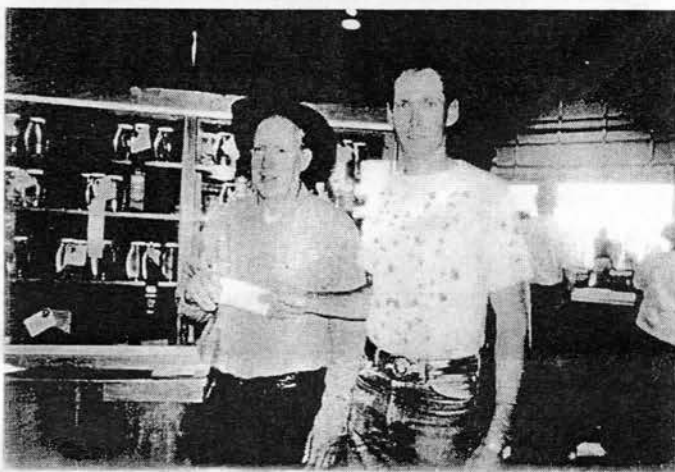
Alva Dickerson won a white ribbon for her comb honey.

Phyllis Shoemake took home a blue ribbon for her extracted honey.

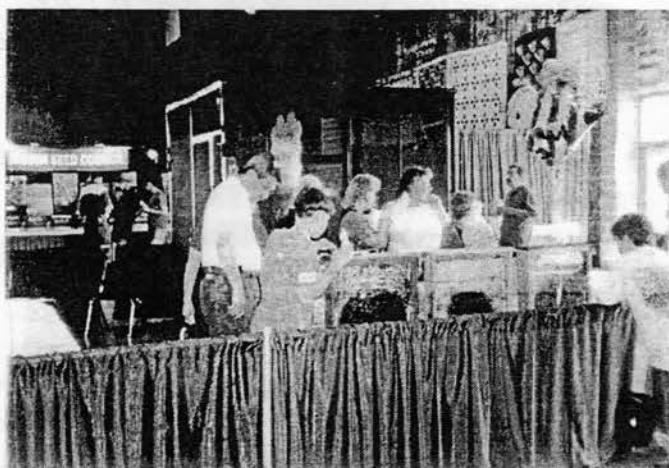
CONGRATULATIONS to all participants! Great job!



Bill Ruhl receiving trophy for outstanding exhibit of honey and honey bees



Richard Farrier of Farrier Farms awards Fred VanNatta a check for outstanding hobbyist fair exhibit in Comb Honey and Frames of Honey



Observation hives and bee cage were popular with fair-goers



Northwest Corner Beekeepers' Conference

Please use a separate form for each individual

Best Western Inn ,Hood River, Oregon
October 28th - 30th, 1999

Attendee's Last Name _____ First Name _____ MI _____ Registration Date: _____

Company Name (if applicable) _____ Home Phone _____

Mailing or Street Address _____ Work Phone _____

City _____ State/Province _____ Postal Code _____ Cell Phone _____

E-Mail _____

Event
Thurs.Night Wine\Cheese Reception
Friday Conference Only @ \$35 (see item 1. below)
Saturday Conference Only @ \$35 (see item 1. below)
Full Two Day Conference @ \$50 (see item 1. below)
Friday Evening Banquet @ \$25.00
Saturday Noon Lunch @ 14.00
OSBA Membership (including Bee Line) \$15.00

Total Conference Registration Fee.

If exhibiting, number of tables @ \$25.00 each. _____

Registration for Individual Days
Complimentary
\$ _____
\$ _____
\$ _____
\$ _____
\$ _____
\$ _____
\$ _____
Total Conference Registration Fee plus exhibitor's table fee

Full Conference Registration
Complimentary
\$ _____
\$ _____
\$ _____
\$ _____
\$ _____
\$ _____
\$ _____
\$ _____

- Attendees qualify for the Pre Registration Rate if the Application Form (with Registration Fee) is postmarked on or before Oct 1, 1999. Late or On-Site registration rates are: One-day, \$45; Full Conference, \$65.
- Make checks payable to OSBA.
- Mail all completed Registration Forms and payment to: Barton E. Snyder, 3000 Ellen Ave. , Eugene, OR 97405.
- Hotel Reservations are not included in these rates. Make your reservations at the Best Western Inn, Hood River, Oregon. 1 800 828-7873 and ask for the Northwest Corner Beekeepers Conference.

Questionnaire (Optional) In 1999,

How many colonies do you own? _____

Do you provide pollination services (y/n)? _____

How do you sell your honey? Wholesale (W), Retail (R), or Both (B) ? _____

How many hives were used in pollination for hire? _____

How many times was each hive rented? _____

Who's Who in the OSBA Resource Guide

OFFICERS

President

Torey Johnson
26707 NE Robinson Rd.
Camas, WA 98607
360-833-8817

Vice President

Barton Snyder
3000 Ellen Ave.
Eugene, OR 97405
541-681-9247
E-mail: NewLeif@aol.com

Secretary/Treasurer

Phyllis Shoemake
1702 Toucan St. NW
Salem, OR 97304
503-364-8401

REGIONAL REPS

Columbia Basin

Rocky Pisto
PO Box 131
Parkdale, OR 97041
541-354-2610

Eastern Oregon

Jan Lohman
77225 Colonel Jordan Road
Hermiston, OR 97838
541-567-3209

Metropolitan Area

Chuck Sowers
4390 Lords Lane
Lake Oswego, OR 97035
503-636-3127

North Coast

Bob Allen
PO Box 434
Garibaldi, OR 97118
503-322-3819

South Coast

Joann Olstrom
3164 Maple Court
Reedsport, OR 97467
541-271-4726

Southern Oregon

George Steffensen
1634 Fish Hatchery Road
Grants Pass, OR 97527
541-474-4305
E-mail: George@cadsnet.net

Willamette Valley

Ray Varner
PO Box 123
Yamhill, OR 97148-0123
503-662-4559
E-mail: RayBee@band1.bandwidth.net

WEB PAGE

<http://www.orsba.org>
WebKeeper: Bart Snyder 541-681-9247

RESOURCES

Dr. Michael Burgett
Dept. of Entomology
Cordley Hall 2046 / OSU
Corvallis, OR 97331-2907
541-737-4896
Fax 541-737-3643
email: burgettm@bcc.orst.edu

Dr. Lynn Royce
Assistant/Associate
Dept. of Entomology
Cordley Hall 2051 / OSU
Corvallis, OR 97331-2907
541-737-5520

Jim Cramer
Oregon Dept. of Agriculture
635 Capitol Street NE
Salem, OR 97310-0110
503-986-4620
Fax 503-986-4737
www.oda.state.or.us/oda.html

REGIONAL BRANCH ASSOCIATIONS

Coos County

Meets 7:30 pm third Friday (except
December) Coquille Annex, Coquille
Pres: Wade Weathersby 541-756-3378
VP: Don Barney 541-267-5945
Sec./Treas.: Toni Wyatt-Kirkeby

Klamath County

Inactive at the present time

Lane County

Meets 7:30 pm second Tuesday
Pacific Cascade Credit Union
1155 Chambers St., Eugene
Pres: Chuck Hunt 541-607-0106
V Ps: Gene Garner 541-746-5972
Denny Jessup 541-687-0912
Treasurer: Frank Svejcar 541-688-9153

Portland Area

Meets 7 pm second Thursday
Clear Creek Mutual Telephone Co.
18238 S. Fischers Mill Rd., Oregon
City
Pres: Jim Allison 503-663-1058
VP.: Denise Dickens 503-655-7848
Sec.: Paul Hardzinski
503-631-3927
Treas.: Charlie Snider 503-829-9169

Southern Oregon

Meets 7:30 pm first Monday
S.O. Research & Extension Center
569 Hanley Rd., Central Point
President: Stan Kee 541-664-3238
VP: John Campbell 541-664-4867
Sec.: George Steffensen
541-474-4305

Tillamook County

Meets 7 pm first Thursday
Forestry Building
4909 Third Street, Tillamook
President: Bob Allen 503-322-3819
VP: Doug Taylor 503-842-4245
Sec./Treas.: Wayne Auble

Tualatin Valley

Meets 7:30 pm fourth Friday
OSU Extension Office, 18640 SW
Walker Rd., Beaverton
Pres.: Roy MacMillan 503-628-0277
VP: Bob Ward 503-324-8123
Sec.: Mary Moss 503-357-4782
Treas.: Jerry Schwanke 503-357-9284

Willamette Valley

Meets 7:30 pm fourth Monday
Rm. 112, Building 50
Chemeketa Community College, Salem
Pres: Richard Farrier 541-327-2673
VP: Ray Varner 503-662-4559
Sec.: Ron Bennett 503-838-2328
Treas: Fritz Skirvin 503-581-9372

Check your Mailing Label

In order to stay within our operating budget while providing the best publication possible, expiration dates on mailing labels will be monitored and *The Bee Line* cannot be mailed to memberships 60 days past the date code. As an additional service, a membership and publications form will be printed on page 11 each month. Note additional savings are available when ordering magazines through OSBA.

Research Contributions

To make tax-deductible contributions for honeybee research at OSU, make your check payable to Agriculture Research Foundation (ARF) and send it to Dr. Royce at OSU (see her address on page 10).

For those of you who want to contribute to OSBA above the \$15 membership dues, please note a new line item on the form below. Your contribution can be earmarked for the Research or General Fund (specify your choice). The Executive Board wants to hold the line on increasing dues across the board but recognizes that some members would like to make one-time or ongoing contributions. Thank you for your support!





Dadant & Sons, Inc.

Everything for the Beekeeper

Branch Offices:

PO Box 2837 2765 South Golden State Blvd. Fresno, CA 93745 Phone (209) 495-0230 Fax (209) 495-0232		15 C Valley Court Chico, CA 95973 Phone (530) 893-0921
--	---	--

Membership and Publications

Membership in the Oregon State Beekeepers Association is open to anyone who has an interest in bees and beekeeping. You do not need to own bees or reside in Oregon to join. OSBA membership is \$15 per person and includes a vote in OSBA elections, discounts on other bee related publications, ten issues of *The Bee Line*, and more. Foreign membership is \$23.

Name _____

Address: _____

City/State/Zip _____

Telephone (____) _____ Local Group _____

Additional Voluntary Contribution: \$ _____ Please apply to Research / General Fund (circle one).

Start your savings now! Get a discount on the following subscriptions through the OSBA:

<i>American Bee Journal</i>	_____	1 yr. \$14.44	_____	2 yrs. \$27.38	_____	3 yrs. \$38.96
<i>Bee Culture</i>	_____	1 yr. \$12.75	_____	2 yrs. \$24.75		
<i>The Speedy Bee</i>	_____	1 yr. \$13.25	_____	2 yrs. \$25.25		

Make checks payable to OSBA and send this form with payment to: Phyllis Shoemake
1702 Toucan St. NW
Salem, OR 97304

Classified Ads

Classified advertising rates per issue: 30 words, per issue: OSBA members, \$2.00, non-members \$3.00. Copy and payment must be received by editor no later than the 15th of the month prior to publication.

FOR SALE: 200-217 used Black Plastic Western Feeders \$1.85 each. Call 503-835-5300.

FOR SALE: 1978 Swinger Loader Model 100. Forks, bucket, box blade, 3 PT. Hitch-owners manual. \$6,800. 541-478-2042.

FOR SALE: 40 shallows, new wire and foundation. 15 deeps. New black snap-in Piercos. 10 pollen traps, new \$15 each. 25 Westerns, new boxes, Pierco, wood. \$20 each. Some miscellaneous. High Country Honey Farm. 541-882-8409.

WILL ASSEMBLE frames and supers. Call Jim Fryar at 541-443-2430 or 541-567-9506. Leave message, or write to 48982 McKay Creek Rd., Pilot Rock, OR 97868.

FOR SALE: Fruital loader boom only, with chain drive power travel, 12 foot long \$200. Also a 1984 Ford Ranger pickup box. Like new \$500. Call 509-924-8316, evenings. Ancel Goolsbey, 9207 E. Broadway, Spokane, WA 99206-3803.

97304X2027 06

PHYLLIS SHOEMAKE - 04/00
1702 TOUCAN ST. NW
SALEM, OR 97304

Address Service Requested

Newsletter of the Oregon State Beekeepers Association
Diane Varner, Editor
P.O. Box 123
Yamhill, OR 97148-0123

The Bee Line

Bulk Rate
US Postage
PAID
Permit No. 692
Salem, OR