

The Bee Line

Newsletter of the Oregon State Beekeepers Association

Volume 19
Number 7

November
1994

National leaders will speak Dec. 3 at OSBA meeting in Lincoln City

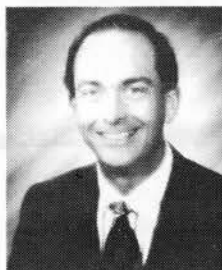
By Connie Petty
Editor, The Bee Line

Troy H. Fore Jr., executive secretary of the American Beekeeping Federation, and John R. Miller of Gackle, N.D., member of the National Honey Board, will be the keynote speakers next month at the 72nd annual convention of the Oregon State Beekeepers Association.

The convention is scheduled Friday-Saturday, Dec. 2-3 at The Shilo



Troy H. Fore, Jr.



John R. Miller

Inn in Lincoln City. Activities include hospitality hour at 6:30 p.m. Friday. Registration begins at 8 a.m. Saturday, with the program from 9 a.m. until 3:30 p.m. The session will close with the business meeting. The auction and banquet dinner are planned at 6:30 p.m.

OSBA President John Mespelt will open the convention and welcome Fore as the first speaker. Fore also speaks at 1:30 p.m. Subjects include the anti-dumping petition against the importation of honey from the People's Republic of China filed last month by ABF and the American Honey Producers Association. Fore will also discuss the ABF convention to be held in January 1996 in Portland.

Fore has been interested in beekeeping since his childhood. His father was a honey producer-packer and queen breeder, operating 1,500 colonies of bees in the 1950s. After high school, Fore attended the University of Georgia, then went into business with his father.

In January, 1969, he took a part-time job as a general reporter/photographer and assistant to the editor/publisher of the local newspaper. In February 1972, he established The Speedy Bee, a monthly publication with a paid circulation of about 7,500. Fore continued working with both papers, serving one year as acting editor, then a year as editor at the weekly. In 1976, he received

Georgia Press Association's "Best Editorial" award for an editorial in a weekly. He resigned that year to devote more time to the Bee while operating 200 colonies of bees.

Fore's wife, Mary, and sons Howard and Andy work in the family business. Fore also employs two full-time and several after-school employees.

In 1978, Fore was named Georgia Beekeeper of the Year; from 1980-83 he served as president of Georgia Beekeepers Association; and from 1982-86 as a member of the ABF Executive Committee. He became ABF executive secretary in September 1988. Fore also is a member of the Agricultural Technical Advisory Committee for Trade in Sweeteners, appointed by the Secretary of Agriculture and U.S. Trade Representative; and an industry representative to the U.S. Department of Agriculture Interagency Technical Working Group on Africanized Honeybees.

John R. Miller, the National Honey Board representative, will talk about research and marketing promotions. He speaks Saturday at 11:30 a.m. and 6:30 p.m. Miller was appointed by U.S. Secretary of Agriculture Edward Madigan to serve a three-year term on the National Honey Board. He was seated on the board last June 27 to represent beekeepers of South and North Dakota, producers annually of more than 45 million pounds of honey.

The fourth-generation beekeeper and member of Miller's Honey Farms Inc. for 20 years serves as vice president of production managing 12,000 colonies of bees in seven states. Miller is a member of the AHPA board and a past vice president of North Dakota Beekeepers Association.

Beyond page one

Editor's Comments	2
Convention Registration Form	3
Beekeeper Questionnaire	4
Full Page Apistan Ad	5
Display Ads	6-7
Branch Association News	8
Trade commission report due	9
Who's Who in Oregon Beekeeping	10
Classified ad form/membership forms	11
Classified Ads	12



**Oregon
State
Beekeepers
Association**

1994 officers*President:*

John Mespelt
1830 Queen Avenue S.W.
Albany, Or. 97321
1-503-926-1850

Vice president:

Dirk Olsen
1037 N. Albany Road N.W.
Albany, Oregon 97321
1-503-926-0443

Secretary-treasurer:

Phyllis Shoemake
1874 Winchester N.W.
Salem, Oregon 97304
1-503-364-8401

The Bee Line, official publication of the Oregon State Beekeepers Association, is published ten times a year. Subscriptions are included with OSBA membership.

Send news items, announcements, letters and advertising to:

Connie Petty, Editor
1033 Gibson Hill Road NW.
Albany, OR 97321
Telephone: (503) 928-7924 or
(503) 926-8718

ADVERTISING RATES**Business ads, per issue:**

Business Card Size	\$7.50
Quarter Page	20.00
Half Page	35.00
Full Page	100.00

Classified ads, per 30 words:

OSBA Member	\$2.00
Non-member	3.00

Deadlines are the 15th of the month before the ad is to appear. Make checks payable to the OSBA.

Mail To: The Bee Line
c/o Connie Petty
1033 Gibson Hill Road N.W.
Albany, OR 97321

Editor's comments

I've been trying to keep - and update - The Bee Line's mailing list. Currently, 80 members are listed with dues paid through November 1994. Dues are due for 80 other members.

To comply with bulk mail rules, at least 200 Bee Lines must be mailed each time. So the list includes advertisers and recipients of complimentary copies. Currently, between 200 and 250 are mailed - depending upon the meeting location. For instance, before the Dec. 2-3 annual meeting at Lincoln City, we will send copies to beekeepers who live on the coast who may be interested and able to attend.

Complimentary copies are also sent to editors of beekeeping publications and officials of beekeeping organizations. And to potential members, those who have expressed an interest in joining as well as beekeepers whose dues have expired and whom OSBA hopes will renew their memberships.

By the way, OSBA must be a worthwhile organization: The Bee Line mailing lists includes members in Canada, California, Washington, Idaho, and Nevada, as well as Oregon.

According to OSBA by-laws, only paid members are eligible to vote at annual meetings. Please check the expiration date on your address label. If your dues have expired, or will expire in December, consider renewing before the annual meeting. It will make the secretary's job easier.

Membership dues are \$15 for everyone. To join or renew, send your name, address, with zip code and your telephone number, and a check payable to OSBA to: Phyllis Shoemake, OSBA Secretary, 1874 Winchester N.W., Salem, Oregon 97403, phone 1-503-364-8401.

According to the mailing list, memberships for the following have or will expire this month:

Daniel Amstad, Bob Arnold; Danny Bade, James Bouten, Jill Bowling, Steve Brown, Tom Brown; John Campell, PattiJo Campbell, Don Coones, Vern Connerly, Ken Crow, Morris Curtis; Jack Devereux; Joe Erhardt; Bob Franz; Ben Goodhead, Albert Griffin; James Hayes, Paul Heins, Pat Heitkam, Gil Helvie, Tom Hennessey; Mark Johnson; Shirley Lamon, Michael Laux, Dave LeFore, Karen and Tom Lehman, Max Lieberman, Paul Liddell, Robert Lund; Michael Meador, Charlie Mock/Nancy McSwane, Bob Morgan; Donald Odland; Ron Penner, John Perrizo, Gary Pierce, Rocco Pisto, Zip Potter, Dennis Potts, David Powell, Dennis Pydynkowsky; Bob Ramsey, George Robbins, Mary Kay Rollis, Marvin Rosette, Donn Rowe; Cecil Sanford, Don Schnack, Rayford Sly, Dean Spellman, Leland Suderman, Maxine Swanson; Jean Townes, Warren Tweedy, Ronald Umbarger; Bob VanLeer, Ed Varney, Vincent Vazza, Otto Wenzloff, Richard W. Winesett, Ted Winter, Wiona and Carl Winter, Kenny Williams, and Dr. Mark Winston.

If this information is incorrect or if you wish to have your name removed from the mailing list, please write: The Bee Line, 1033 Gibson Hill Road N.W., Albany, Or. 9732.

Mailing list update: Have you noticed the "Address Correction Requested" message on the cover of The Bee Line? Every month some newsletters are returned. This costs 29 cents - or 52 cents if the post office tries to deliver the newsletter and the forwarding address order has expired. And the returned newsletter does not always include a new address. Please keep The Bee Line posted if you plan to move or change your address.

New branch officers: Some branch associations will elect officers this fall. Please send name, office, address and telephone numbers to The Bee Line. Include information about meeting places and times. If possible, include a list of current members. Send to Bee Line, 1033 Gibson Hill Road N.W., Albany, Or. 97321. Questions? 1-503-926-8718 or 928-7924.

Connie Petty, editor

OREGON STATE BEEKEEPERS ASSOCIATION

72nd Annual Convention
Friday and Saturday, December 2 and 3, 1994
The Shilo Inn, Lincoln City, Oregon

Program Highlights

Friday: Hospitality hour at 6:30 p.m.
Saturday: Registration, 8 a.m., presentations, 9 a.m.
Research lunch, noon; guest speaker, panel discussion, 1:30 p.m.
Business meeting, election of officers, 3:30 p.m.,
Live auction and banquet, 6:30 p.m.

(Silent auction: 10 a.m. Friday until after the Saturday afternoon coffee break)

Name/names: _____

Address: _____

City, state, zip: _____

Pre-registration, \$10 or \$15 per couple: _____ (number) \$ _____

Research Luncheon, \$20: _____ (number), \$ _____

Banquet, \$22: Salmon _____ Steak _____ \$ _____

Total Amount Enclosed:\$ _____

Make checks payable to Oregon State Beekeepers Association
Send to: Phyllis Shoemake, Secretary; 1874 Winchester N.W., Salem, Or. 97304
(Phone 1-503-364-8401)

EXHIBIT SPACE

Exhibit space (including honey pots collections): \$25.

Send requests, including type of exhibit

To: Oliver Petty, 1033 Gibson Hill Road N.W., Albany, OR. 97321

Phone 1-503-928-7924 or 1-503-926-8718.

(Makes checks to Oregon State Beekeepers Association)

Hotel reservations: Room with one queen bed (1 or 2 people), \$61;
2 beds, \$64. A few rooms without view are available for \$39.

Phone: 1-800-334-1051.

WANTED: Donations for silent and live auctions.

Bee Line Beekeeping Survey

Name: _____

Address: _____

County, city, zip, state: _____

I keep _____ colonies of bees. My income sources are (circle one):

Pollination, honey, beeswax, pollen, other _____

I started keeping bees in _____

I got interested in beekeeping when (I caught a swarm, for instance):

I like beekeeping because ? _____

Problems I've had during the past few years (mites, foulbrood, other?):

I belong to these organizations:

OSBA Branch _____ How many years? _____

OSBA _____ How many years? _____

American Beekeeping Federation? ____ Years? _____

Other: California, Washington, British Columbia, Idaho, Nevada? _____

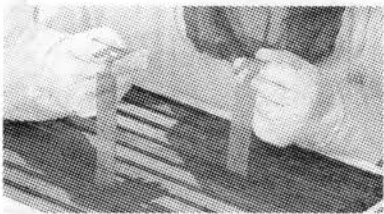
I read/subscribe to these beekeeping publications (check) : American Bee Journal _____ Bee Culture ____ Speedy Bee ____ The Bee Line ____ Branch association newsletter _____

Other: _____

Please mail with your pre-registration (reverse) to:
Oregon State Beekeepers
Secretary Phyllis Shoemake,
1874 Winchester N.W.,
Salem, Oregon 97304,

or send to:
The Bee Line,
1033 Gibson Hill Road N.W.,
Albany, Oregon 97321

Varroa mites are becoming a larger problem. If they attack your bees, the financial losses can be devastating.



With a new self-hanging design and EPA registration, APISTAN is easier than ever to use.

But now you can protect it all with APISTAN® Strips.

Compared to the cost of replacing an infested hive,

APISTAN just makes good sense economically. It's

99.8% effective in eliminating

Varroa mites, yet, it won't harm bees or contaminate

honey. Also it's the only

miticide approved in all

50 states. So look into

APISTAN today or you

may be looking at a

huge loss.

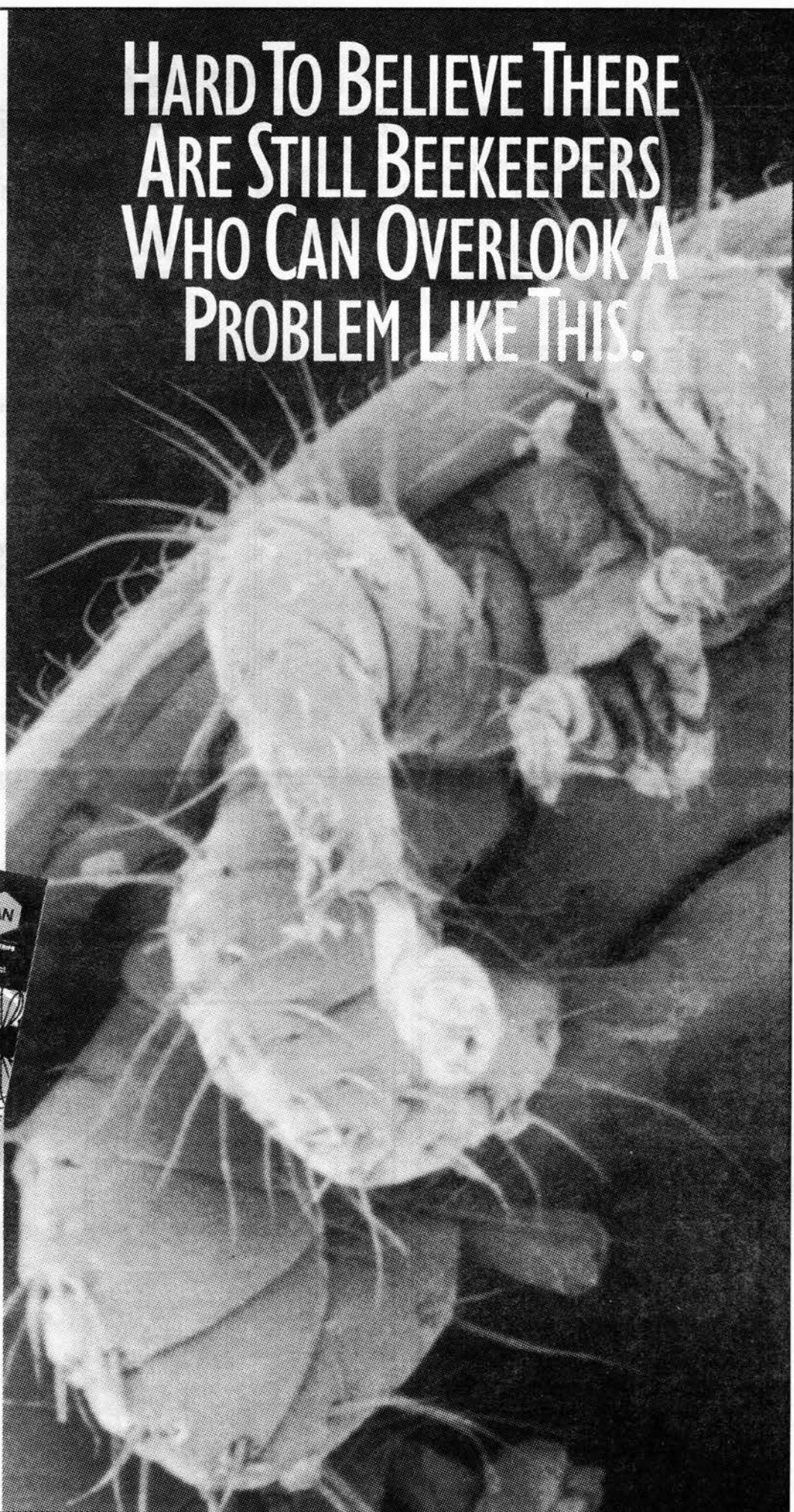


For more details or to view our informative video tape, call 1-800-527-0512.

Zoecon Professional Products: Sandoz Agro, Inc. 1300 E. Touhy Ave., Des Plaines, IL 60018. Apistan is a registered trademark of Sandoz Ltd. ©1994 Sandoz Agro, Inc.

Always read the label before using the product.

HARD TO BELIEVE THERE ARE STILL BEEKEEPERS WHO CAN OVERLOOK A PROBLEM LIKE THIS.



Are your dues due? Check address label. Fill out and send form on page 11 with check to OSBA secretary or pay dues to your local branch association. The information and dues will be sent to the state secretary. The state association and local branches need members. You need to belong to beekeeper associations to be aware of problems and research.

BE A BETTER BEEKEEPER

Read & See EVERY MONTH

- Beekeeping Basics
- Problems Solved
- Other Beekeepers
- Newest Products
- Marketing Tips
- Great Writers
- Much, Much More!



Bee Culture

The Magazine For American Beekeeping
Call 800-289-7668

For A Free Copy
BE A BETTER BEEKEEPER TODAY!

HEITKAM
HONEY
BEES



PAT HEITKAM & FAMILY
RT. 2 BOX 2542
ORLAND, CA 95963
1-916-865-9562

Queens, Bees,
Honey & Pollination

Snow Peak Apiaries

Quality Hive Products

Custom cut tops, bottoms and supers.
We buy beeswax.

Franz and Audrey Yordy
1-503-451-3752

34769 E. Lacombe Drive
Lebanon Oregon 97355

CUSTOM EXTRACTING CROP POLLINATION HONEY



George and Susan Hansen
30576 Oswalt Road
Colton, Oregon 97017
1-503-824-2265



Gibson Hill Honey Farm

OLIVER W. PETTY, Owner

1033 Gibson Hill Rd. Albany, Oregon 97321
1-503-928-7924

NOSEMA "The Quiet Killer"

Colonies fed
FUMIDIL[®]-B can produce
20% MORE BROOD
and 58% MORE HONEY!

You can treat
package bees
with FUMIDIL[®]-B
for as little as 60 cents!

We also carry:
Terra-Brood[™] Mix,
Terramycin[®]
Products, Apistan,
Candle Supplies,
Gift Boxes!



MID-CON

8833 QUIVIRA ROAD
OVERLAND PARK, KS. 66215
(913) 492-1670
(800) 547-1392
FAX (913) 492-2742



GLENN APIARIES
 Italian and Carniolan Queens
Send for information on how our breeding program helps you keep better bees.



Top Quality, Fertile and Guaranteed to arrive Alive and Healthy
GLENN APIARIES
 P.O. Box 2737
 Fallbrook CA 92088
 Phone/Fax (619) 728-3731






Miller Wood Products

Glenn E. Miller
 General manager/Partner

Manufacturers of Quality Pine Cutstock, F.J. Blocks, and Bee hives Frames, Tops, Bottoms, Nucs.

Bus. (503) 826-9266
 Fax (503) 826-2764
 Res. (503) 779-2853

2276 Avenue "H"
 P.O. Box 2414
 White City, OR 97503-0481

FAIRVIEW BEE SUPPLIES
 1033 Gibson Hill Road N.W.
 Albany, Oregon, 97321

Oliver Petty & John Mespelt

The mid-valley spot to shop for bee supplies

Hours: Noon to 6 p.m. Wednesday
 8 a.m. until 6 p.m. Saturday
 Or by appointment. Phone 1-503-928-7924 or 1-503-926-1850

GLORYBEE
 120 N. Seneca Rd. • Eugene, OR 97402
 TOLL FREE NUMBER 1-800-456-7923

B U Y I N G

ALL GRADES OF HONEY

Free Bee Supply Catalog

BEES & BEEKEEPING SUPPLIES



RUHL BEE SUPPLY

1-503-256-4231 12713-B N.E. Whitaker Way
 Ed & Sheryl Johnson Portland, OR 97230

Honey Pots International

Attention collectors of honey pots

Second annual meeting

7 a.m. Saturday, Dec. 3, 1994
 The Shilo Inn - - - - Lincoln City

No-host breakfast

AGENDA

Report from President Betty Ramsey

Can we host an international exhibit at the 1996 American Beekeeping Federation in Portland

Business, election of officers, by-laws, dues



Read - Advertise
THE SPEEDY BEE

The Beekeeper's Newspaper
 \$13.25 for OSBA Members

Write for a FREE Sample Copy:
 The Speedy Bee • PO Box 998 • Jesup, GA 31545

Branch association news

Willamette Valley President Walt Nichol believes in sharing information about beekeeping. Nichol places an observation hive in his booth at Salem Farmers Market each Saturday. Besides selling honey and jam, he talks about beekeeping and his bees. In the WVBA newsletter, Nichol praised these members for also sharing information about beekeeping:

• WVBA member David Leoscher and two of his sons took an observation and gave talks at schools in his area.

• Members Richard Farrier and Ron Bennett represented beekeeping at Salem Public Library's "Experts Day."

Coos County Beekeepers will elect officers at the Nov. 18 meeting. President Gordon M. Starr - who also writes the group's newsletter - said he's served three years and wants out. Members Bruce Yeager and Jack Devereaux are seeking nominees. The branch association meets at 7:30 p.m. on the third Friday each month except December at the Coquille Annex in Coquille. For more information, phone Starr at 1-503-396-4537.

National Honey Board 'hot line' reveals consumer views of honey as a good food

Honey is thought to be a natural product. Ninety-four percent of consumers (both honey users and non-users) see honey as "natural." Honey users give the product a 99 percent all-natural rating.

Other views:

• 45.6 percent of consumers see honey as "very" nutritious as opposed to only 10.6 percent who see corn syrup as nutritious.

• "Nutritious" and "tasty" and "an alternative to sugar" lead the list of consumer views on honey when it is used as an ingredient - a product that tastes good, is good for you, and as an alternative to sugar.

• More than 49 percent of consumers indicated a preference for a honey added product.. Health and well being as well as taste and flavor are the key reasons cited for this preference. Less than two percent of respondents would select a product with artificial honey added.

• Honey is seen as an extra value compared to corn syrup or sugar. To almost half of the consumers honey added products are seen as being of value.

• When a label says "honey added," nearly 5 percent of consumers expect at least 60 percent of the sweetener to be honey.

• The Honey Board's honey bear logo conveys important product attributes and strengths. Consumer views on products which carry the honey bear logo include:

"good taste / flavor .. moist and tasty .. extra good for you .. must meet higher standards .. is an extra quality product .. offers an extra value .. fresh."

Research results indicate a positive consumer attitude toward honey, not only is honey regarded as "good for you," it is also an all natural alternative, in sync with today's healthy lifestyles and consumer preferences.

Fruit Dressing

- 2 egg yolks
- 1 (8 oz.) pkg. cream cheese, softened
- 1/2 c. HONEY
- 3 T. milk
- 1 t. lemon juice
- 1/2 t. vanilla

Beat ingredients together until fluffy. Refrigerate. Serve over fruit or use as a fruit dip. Serve fruit in scooped watermelon.

HONEY Tips

Cooking Tips

- For best results, use recipes that specify HONEY.
- When you substitute HONEY for granulated sugar in recipes:
 - Substitute HONEY for up to 1/2 the sugar.
 - With experimentation, HONEY can be substituted for all the sugar in some recipes.
 - Reduce the amount of liquid in the recipe by 1/4 cup for each cup of HONEY used in baked goods.
 - In baked goods, add 1/2 teaspoon baking soda for each cup of HONEY used.
 - To prevent over-browning of baked goods, reduce oven temperature by 25°F.
 - For easy removal, coat measuring cup with vegetable cooking spray before adding HONEY!
- Honey absorbs and retains moisture readily so baked goods will stay fresh longer.

Storage Tips

- Store HONEY at room temperature.
- If HONEY crystallizes, remove lid and place jar in warm water until crystals dissolve. Or microcook 1 cup of HONEY in microwave-safe container at HIGH (100%) 2 to 3 minutes or until crystals dissolve; stir every 30 seconds. Do not boil or scorch.

Buying Tips

- Select mildly flavored HONEYS, such as clover, for use in cooking where delicate flavors predominate.
- Use strongly flavored HONEYS in spreads or other recipes where a distinct HONEY flavor is desired.

Baked Squash

- 6 pieces (4x4 inches) banana squash or 3 sm. acorn squash, halved
- 1-1/2 t. crushed rosemary
- 3 T. butter or margarine
- 1/3 c. mild-flavored HONEY

Preheat oven to 350° (moderate). Remove any seeds and membrane from squash. Place squash in single layer in a greased baking dish. Sprinkle about 1/4 tsp. rosemary over each piece and dot with butter. Bake at 350° for 40 minutes or until almost tender. Drizzle pieces with HONEY and continue baking until tender. Serve with additional HONEY and butter. Makes 6 servings.

Honey board offers recipe leaflet, ideas for baking with honeybee-pollinated crops

A new recipe leaflet - "Bringing You Nature's Bounty Is Our Line," is now available from the National Honey Board. The leaflet features recipes made from honeybee-pollinated crops including Honey Cranberry Butter, Back to Nature Cookies, and Honey-Kissed Fruit.

The brochure also describes the work of the honeybee in pollinating fruits and vegetables.

Beekeeping associations and assessment-paying supporters of the NHB can order up to 500 recipe brochures per year free of charge. Additional brochures are 5 cents each.

To order a brochure, write: National Honey Board, 421 - 21st Avenue, No. 203, Longmont, Colo. 80501, or phone 1-800-553-7162.

November 17: Trade commission to determine injury of Chinese import honey on U.S. market

The International Trade Commission (ITC) is expected to render a preliminary determination Nov. 17 on whether U.S. honey producers have been materially injured, or threatened with material injury, by honey imports from the People's Republic of China.

If the ITC's determination is affirmative, the U.S. Commerce Department will determine the extent to which the Chinese imports are being dumped in this country.

The ITC's action is based on an anti-dumping petition filed in early October against the People's Republic of China by the American Beekeepers Federation (ABF) and the American Honey Producers Association (AHPA.) The petition charges that Chinese honey is being sold in the United States at prices 170 percent lower than the cost of production in China.

AHPA President Richard Adee explained the issue in a press release:

- China maintains an import duty of 55 percent on honey imports, which blocks all non-Chinese honey out of their market.
- The U.S. duty on honey imports is only about 2 percent, and is the smallest of any significant market in the world.
- It is well-known that the Chinese honey industry is extremely inefficient and suffers huge losses each year, and could not flood the export market without the high Chinese import duty and significant subsidies from the Chinese government.
- Chinese honey imports are being sent here at below-cost prices for the sole purpose of capturing market share and earning hard currency.

Adee called China's action "outrageous" and noted that "our industry is painfully being destroyed as a result."

This is the second time this year the ITC has investigated Chinese honey imports. In January, the ITC advised President Clinton - under Section 406 of the Trade Act of 1974 - that the rising volume of low-priced Chinese honey imports was disrupting the U.S. honey market and threatening the U.S. honey industry.

To protect the U.S. honey industry, five of the six ITC commissioners recommended the U.S. impose a combination of higher duties and quotas on imported Chinese honey. In April, however, President Clinton declined this recommendation and determined not to impose any restraints on Chinese honey imports.

In the press release, American Beekeeping Federation President David Sundberg said this came as "a severe blow to the industry."

As low-priced Chinese honey imports continued during 1994 to flood the U.S. market, the honey industry's overall condition worsened.

According to Sundberg, the anti-dumping petition was the only recourse the ABF and AHPA could take. President Clinton does not have the discretion to over-ride findings of dumping and resulting material injury made by the Commerce Department and ITC, respectively, in the course of anti-dumping investigation.

According to the AHPA and ABF leaders:

- From 1991 to 1993, imports of honey from China rose - from 45 million pounds to 77 million - an increase of 71 percent.
- The share of Chinese honey in the U.S. market went from 14.8 to 25.2 percent.
- The value of Chinese honey imports rose from \$19 million to \$29 million.
- And, while it costs 83 cents per pound to produce and pack honey in China, the honey was being sold here at prices as low as 30 cents pound, or about 36% of the cost of production in China. (This is exclusive of freight, insurance, duties and assessments.)

Mark your calendar

- Jan. 9-13, 1995: American Honey Producers Association, Eldorado Hotel Casino, P.O. Box 3399, Reno, Nev. 89505, phone 1-800-643-5966.
- Jan. 17-22, 1995: American Beekeeping Federation/National Honey Board, Marriott Hotel, Austin, Texas. Contact: ABF, P.O. Box 1038, Jesup, Ga. 31545; phone/FAX 1-912-427-8447. (Travel arrangements: Phone Albany Travel, 1-503-967-1022 or 1-800-327-2699.
- Aug. 15-19: Congress of Apimondia, Lausanne, Switzerland. Write: Apimondia, International Federation of Beekeepers' Associations, Corso Vittorio Emanuele 101, 1-00186, Rome, Italy. Telephone/FAX: 39-6-685-22-86.

NEW MITE-RESISTANT STOCK
***ARS-Y-C-1 A Carniolan Breed**
Caucasian Midnight Starline
Double Hybrids
Queens & Package Bees

Write for free descriptive brochure:

HOWARD WEAVER & SONS, Inc.
Rt. 4, Box 24
Navasota, Texas 77868-9401

Phone: 1-409-825-7701 or 1-800-247-5520
Fax: 1-409-825-7719. Fax hrs. 7 p.m.-5 a.m.

NHB offers kits to promote honey/honeybees at fairs, shows

The National Honey Board is offering a "Trade Show and Exhibit Planning Kit" available to beekeeping group's sponsoring booths at fairs and other exhibitions.

Also, a media kit is available that includes the story on pollination, news releases, summer recipe tips and a new recipe leaflet, "Bringing You Nature's Bounty Is Our Line."

To order, contact Tracy Baker, National Honey Board, 421 21Ave. No. 203, Longmont, Colorado 80501. Or, phone 1-800-553-7162.

Who's Who...In The OREGON STATE BEEKEEPERS ASSOCIATION

OFFICERS

President

John Mespel
1830 Queen Avenue S.W.
Albany, Or. 97321
Telephone: 1-926-1850

Vice president

Dirk Olsen
1037 North Albany Road N.W.
Albany, OR 97321
Telephone: 1-503-926-0443

Secretary-treasurer

Phyllis Shoemake
1874 Winchester N.W.
Salem, Or. 97304
Telephone 1-364-8401

Past president

Marjorie Ehry
19500 N. Highway 99W
Dundee, Or. 97115
Telephone: 1-864-2138

REGIONAL REPRESENTATIVES

Central Oregon:

Bob Morgan
3800 Benson Road
The Dalles, Or. 97058
1-298-5719

Eastern Oregon:

Dave Lefore
Rt. 3 Box 207E
Milton-Freewater, Or. 97862
1-503-938-3286

Metropolitan Area:

Chuck Sowers
4390 Lords Lane
Lake Oswego, Or. 97304
1-636-3127

North Coast:

Bob Allen
P.O. Box 434
Garibaldi, Or. 97118
1-322-3819

South Coast:

Joann Olstrom
6134 Maple Court
Reedsport, Or. 97467
1-271-4726

Southern Oregon:

George Steffensen
1634 Fish Hatchery Road
Grants Pass, Or. 97527
1-474-4305

Willamette Valley:

Don Ames
25222 Arnold Lane
Elmira, Or. 97437
1-503-935-1644

COMMITTEE CHAIRMEN

Honey promotion: Joann Olstrom
Nectar & pollen plants: Bertie Stringer
Pollination: Don Kelley
Laws & regulations: Fritz Skirvin
Oregon State Fair: Walt Nichol

APIARY ADVISORY BOARD

President

Bruce Yeager, 1-888-6833

Vice president

Bill Rufener, 1-324-2571

Members

Al Freeburne, 1-855-7243
DeWayne Keller, 1-889-8279
John Mespelt, 1-926-1850
Bob Morgan, 1-298-5719
Fred Van Natta, 1-585-8254

Extension Entomologists:

Dr. Michael Burgett
Department of Entomology
Cordley Hall 2046
Oregon State University
Corvallis, Or. 97331-2907
Telephone: 1-737-4733

Dr. Lynn Royce

Assistant/associate
Department of Entomology
Cordley Hall 2046
Oregon State University
Corvallis, Or. 97331-2907
Telephone: 1-737-4733

REGIONAL BRANCH ASSOCIATIONS

Officers and Meetings

Coos County

Meets 7:30 p.m. third Friday (except December)
Coquille Annex, Coquille

President: Gordon Starr, 1-503-396-4537

Vice-president: Vernon Hone, 1-503-572-2721

Klamath County

Meeting dates and sites vary.

Call officers:

President: Ken Crow, 1-503-882-1893

Vice president: Chet Hamaker, 1-503-882-2404

Lane County

Meets 7:30 p.m. second Tuesday;

Public Employees Credit Union,

1155 Chambers St., Eugene

President: Lee Zigler, 1-503-688-5675

Vice president: Dan Miller, 1-503-747-7044

Treasurer: Jim Sheridan, 1-503-344-1354

Newsletter Ed.: Robin Gage, 1-503-746-0808

Portland Area

Meets 7 p.m. second Thursday

Clear Creek Mutual Telephone Co.

18238 S. Fischer Mill Road

Oregon City

Information: Rosemary Marshall, 1-503-631-7313

Southern Oregon

Meets 7:30 p.m. first Monday;
Bee-Complex, 565 Industrial Circle,
White City

President: Rob Behrend, 1-503-664-3426

Vice president: John Campbell, 1-503-664-4867

Secretary: Lynne Behrend, 1-503-664-3426

Tillamook County

Meets 7 p.m. first Thursday;

Fish & Wildlife Bldg.,

4909 Third St., Tillamook

President: Bob Allen, 1-503-322-3819

Vice president: Fritz Hoffman, 1-503-842-6856

Secretary-treasurer: Gregg Cline, 1-503-842-6323

Tualatin Valley

Meets 7:30 p.m. second Wednesday

PGE Building,

Old Scholls Ferry Road & Murray,

Beaverton

President: Bill Rufener, 1-503-324-2571

Vice president: Jim Marshall, 1-503-642-3319

Secretary: Lew Wolf, 1-503-251-5482

Treasurer: PattiJo Campbell, 1-503-590-1336

Willamette Valley

Meets 7:30 p.m. fourth Monday;

Room 102, Building 40,

Chemeketa Community College, Salem

President: Walt Nichol, 1-503-585-5705

Vice president: Laurence Bower

Treasurer: Fritz Skirvin, 1-503-581-9372

**Directory:
The business of bees**

Keller's Apiary

4620 Hyline Road
Ontario, Or. 97914
Phone 1-503-889-8279
Owners: Maxine, DeWayne,
DeWayne, Katrina & Todd
Family business: Honey,
pollination services

Wild Harvest Honey

20367 Long Road
Blodgett, Or. 97326
Phone 1-503-456-2631
Owner: Kenny Williams
Crop pollination, honey,
beeswax candles

Joann's Honey

3164 Maple Court
Reedsport, Or. 97467
Phone 1-503-271-4726
Owner: Joann Olstrom
Basic bee supplies and
related books; honey
and limited pollination.

Mountain Meadow Honey

27997 Schiewe Drive
Colton, Or. 97017
Phone 1-503-824-3456
Owners: Charlie Mock
Nancy McSwane
Crop pollination;
honey production

**To be included in the
Directory...**

Please send your business card and the
form below (or use a separate piece of
paper with the following information:

Name of business: _____

Owner/owners: _____

Street Address: _____

City, state & zip: _____

Telephone number: _____

Service, what you sell or do: _____

Mail to:
The Bee Line
1033 Gibson Hill Road N.W.
Albany, OR 97321

Classified Ad:

Please run this ad in the following issue / issues: _____

Your name: _____

Address: _____

City: _____ State: _____ Zip: _____

Telephone: () _____

Rate: Up to 30 words: \$2 for OSBA members; \$3 non-members per issue
Make checks payable to OSBA (amount): _____
Please send classified ad to: The Bee Line, 1033 Gibson Hill Road N.W.,
Albany, Oregon, 97321; FAX 1-503-926-1500

Membership and Publications

Membership in the Oregon State Beekeepers Association is open to anyone
who has an interest in bees and beekeeping. You do not need to own bees
or reside in Oregon to join.

Amt. Enclosed New?

OSBA Membership: \$15 per person. Includes
10 issues of the BEE LINE and a vote
in all OSBA elections. If you belong to
a local group, which one? _____
(Your local gets \$1 of your dues.)

Foreign subscriptions are \$23.

25% Membership Discount on All Magazine Subscriptions:

American Bee Journal 1 yr. \$12.70, 2 yrs. \$23.55 _____

Gleanings In Bee Cultures 1 yr. \$12.25 2 yrs. \$22.50 _____

The Speedy Bee 1 Yr. \$13.25 2 Yrs. \$25.25 _____

Name _____

Address _____

City _____ State _____ Zip _____

Please make checks payable to OSBA and send to:
Phyllis Shoemake, 1874 Winchester NW, Salem OR 97304.

Classified - Want Ads

FOR SALE: 2-frame stainless reversible honey extractor, \$180. Tom Meier, 6700 NW Kansas City Road, Forest Grove, OR. 97116, phone 1-503-357-4173. (1-11-94)

FOR SALE: Used 10-frame boxes, \$3 each; lids & bottoms, \$1.50. **WANTED:** Pollen. Seeley & Sons Apiaries, 6527 Wacomda Road, Salem, OR. 97305, phone 1-503-792-3523. (11-94)

FOR SALE: Honey processing equipment, Dakota Gunness Model 50 Decapper, \$1,000; Maxant 10-frame radial extractor w/stand, \$720; Kelley sump, stainless, water jacketed, \$200; Oberdorfer 1-inch honey pump, bronze w/motor, \$140; stainless decapping tank w/stand, \$120; stainless liquefying tank, \$100; galvanized bottling tank w/stand, \$100; Pierce decapping knife, \$50. Kermit Olson, 12550 SW Brookside Ave., Tigard, OR. 97223. 1-503-639-7278.

OSBA 72nd ANNUAL MEETING: Dec. 2-3, 1994, The Shilo Inn, Lincoln City, Or. Reservations: Phone 1-800-334-1051. Pre-registration: \$10 per person, \$15 per couple. Send checks today to: OSBA, 1874 Winchester N.W., Salem Or. 97304.

BEEKEEPING HOBBY FOR SALE—will NOT sell individually: 12 dbl deep colonies w/Apistan strips; Maxant 6-12 frame Radial extractor w/stand (like new), uncapping tub/drainner w/cover; 40 shallow supers w/9 frames & comb; 9 deep boxes w/9 frames & comb; 4 Ross Rnd. supers w/all supplies, extra tops & bottoms; 15-1gal. barrel top feeders; 10 queen excluders; electric uncapping knife, 10 5-gal. buckets w/lids; 3-6 gal. buckets w/honey gate & lids; smoker, hive tools, other misc. equipment & supplies. Total, \$12,000. Randy Stewart, 4280 Pleasant Ridge Rd., The Dalles, OR. 97058, phone 1-503-296-9614.

BEESWAX WANTED: Will pick up large quantities. Cappings wax rendered. David Kerr, 8545 Perrydale Road, Amity, Or. 97101, phone 1-503-835-5300. (10-11-94)

BEE SUPPLIES: Open noon until 5 p.m. Wednesday and 9 a.m. until 5 p.m. Saturday, or by appointment, phone 1-503-928-7924 or 1-503-926-1850. Fairview

Oregon State Beekeepers Association

The Bee Line

Connie Petty, editor
1033 Gibson Hill Road N.W.
Albany, Oregon 97321

Address Correction Requested

Non-Profit
Organization
U.S. Postage
PAID
Permit No. 692
Salem, Oregon

3/95

Alan Ehry

3/95

Marge Ehry

19500 N. Highway 99W

Dundee, OR. 97115