

# The Bee Line

Newsletter of the Oregon State Beekeepers Association

Volume 19  
Number 6

Sept.-Oct.  
1994

## Northwest 1993-94 winter colony losses

By Michael Burgett  
Department of Entomology  
Oregon State University

Beekeepers in the Pacific Northwest are well aware of the increased losses of honeybee colonies over the past seven years, and especially the past two. Much of the increased mortality is attributed to the presence of two species of parasitic mites; *Acarapis woodi* (the tracheal mite) and *Varroa jacobsoni* (the Asian brood mite).

## Washington beekeepers plan annual convention

The Washington State Beekeepers Association annual conference is scheduled Oct. 20-22 at the Mark 205 Motor Inn, 221 N.E. Chkalov Drive, Vancouver, Wash.

Washington State Sen. Dean Sutherland will be the keynote speaker. Apiculturists from throughout the Northwest will discuss problems facing beekeepers along with their current research projects and findings.

Speakers and topics include:

- Dr. Rob Page, University of California at Davis, "Africanized Honeybee Research - Five Years Later."
- Dan Mayer, Washington State University, Honeybee Research Update.
- Dr. Mark Winston, Simon Fraser University, British Columbia, "New Applications of Honeybee Queen Pheromone for Beekeeping and Crop Pollination."
- Dr. Mike Burgett, Oregon State University, "Surviving Mites in the '90s, Fact or Fallacy."

Jim Bach, apiarist with the Washington State Department of Agriculture, will talk about beekeeping in the United Kingdom. Other speakers include Dr. Brad Weeks, president of the American Apitherapy Society, and Jim Gray, Intermountain Canola, and Ron Babcock, pollen producer.

**What and When:** Executive board meeting, 1 p.m. Thursday, Oct. 20; registration at 4 p.m., and "Mead, Wine and Cheese Party" at 7:30 p.m. Sessions all day Friday and Saturday, Oct. 21-22. Banquet, 7:30 p.m. Friday, Oct. 21.

**Registration:** \$40 or \$50 after Oct. 8, or \$25 per day. (Includes a syllabus and refreshment breaks.)

**Meals:** Banquet - \$21.50; \$25 at the door; wine-cheese party, \$4.

**Make checks to:** WSBA 1994 Convention.

**Mail to:** Adam Kluka, 1006 N.E. 202nd Ave., Camas, Wa. 98607 (phone 1-206-254-1544.)

**Room reservations:** Mark 205 Motor Inn, 1-800-426-5110. (Say you will be attending WSBA convention.)

Since 1989, surveys of winter honeybee colony losses have been conducted at the Honeybee Laboratory at Oregon State University. This year, for the first time, data from Washington beekeepers have been included.

All Washington and Oregon beekeepers who registered more than 25 colonies were sent survey forms. The survey results are based on the return

**Beekeepers are encouraged to realize that every healthy colony becomes a more valuable commodity in an industry that is experiencing reduced hive numbers.**

of 82 survey forms; 34 from commercial beekeepers, who we define as owning more than 300 colonies, and 48 semi-commercial beekeepers who register between 25 and 299 colonies. A total of 39,405 colonies were involved in this year's survey.

The survey asked beekeepers to provide colony numbers for the following dates: October 1, 1993, December 1, 1993, February 1, 1994 and March 1, 1994. For the purposes of the survey we consider October 1 as the beginning of "winter" and March 1 as the end of "winter."

Total colony losses for all survey respondents were 10,305 hives from a population of 39,405 colonies, or 26 percent. This is the highest percent loss reported for the six years of the survey. If we compute a conservative colony replacement cost of \$100 per hive, this represents a loss of \$1,030,500 for beekeepers involved in the survey.

The nearly 40,000 colonies in the survey represent about one-quarter of all registered colonies in Oregon and Washington. If we consider the results of our sample to be an accurate reflection of the overall honey bee industry for the two states, then predicted losses would exceed 40,000 colonies at a

Continued on page 4

## Beyond page one

- Page 1: Winter bee losses/Washington convention
- Page 2: Editor's comments
- Page 3: Full page Apistan ad
- Page 4: Winter losses continued/tables (graph optional)
- Page 5: Winter losses continued/tables, graph fillers
- Page 6-7: Display ads
- Page 8: Portland Beekeepers/ABF, AHPA conventions
- Page 9: That honey, flavored honeys, Journal prices up
- Page 10: Who's Who in Beekeeping (Change Portland meeting)
- Page 11: Classified/membership forms (new prices for Bee Journal)
- Page 12: Classified ads



Oregon  
State  
Beekeepers  
Association

## 1994 officers

### President:

John Mespelt  
1830 Queen Avenue S.W.  
Albany, Or. 97321  
1-503-926-1850

### Vice president:

Dirk Olsen  
1037 N. Albany Road N.W.  
Albany, Oregon 97321  
1-503-926-0443

### Secretary-treasurer:

Phyllis Shoemake  
1874 Winchester N.W.  
Salem, Oregon 97304  
1-503-364-8401

The Bee Line, official publication of the Oregon State Beekeepers Association, is published ten times a year. Subscriptions are included with OSBA membership.

### Send news items, announcements, letters and advertising to:

Connie Petty, Editor  
1033 Gibson Hill Road NW.  
Albany, OR 97321  
Telephone: (503) 928-7924 or  
(503) 926-8718

## ADVERTISING RATES

### Business ads, per issue:

Business Card Size	\$7.50
Quarter Page	20.00
Half Page	35.00
Full Page	100.00

### Classified ads, per 30 words:

OSBA Member	\$2.00
Non-member	3.00

Deadlines are the 15th of the month before the ad is to appear. Make checks payable to the OSBA.

Mail To: The Bee Line  
c/o Connie Petty  
1033 Gibson Hill Road N.W.  
Albany, OR 97321

## Editor's comments

### Beekeeper Meets Beekeeper

Beekeeper Meets Beekeeper: This is the slogan of the next Congress of Apimondia, the International Federation of Beekeepers' Association, which is scheduled to meet August 15-19, 1995 in Lausanne, Switzerland.

This should be the slogan of all beekeeper gatherings, from branch associations in Oregon, to small beekeeper clubs in the United Kingdom, and state and provincial and national meetings held in countries throughout the world.

Apimondia brings them all together.

While Apimondia (a Romanian word) will meet next summer on the shore of the beautiful Lake Geneva, the Oregon State Beekeepers Association will meet this fall at The Shilo Inn on the shores of the beautiful Pacific Ocean.

Those dates are December 4-5. Mark your calendar: Plan to attend.

In its brochure, the Apimondia leaders explain the slogan "Beekeeper Meets Beekeeper."

"By choosing this slogan, we would like to emphasize the goal of this congress which is to unite as friends, beekeepers from all over the world and to allow them to exchange views and talk about their experience, while offering them the latest information of scientific and practical research."

This can be the goal of the Oregon Beekeepers Association, and the reason all beekeepers need to belong and attend gatherings of branch and state associations.

The Apimondia Congress will include a commercial exhibition, pre-and-post tours, an excursion day and contests as well as educational sessions.

If you're interested, write: Apimondia, International Federation of Beekeepers' Associations, Corso Vittorio Emanuele 101, 1-00186, Rome, Italy. The telephone/FAX number is: 39-6-685-22-86.

Paul Heins of Albany Travel will offer an Apimondia. If interested, phone 1-967-1022 or 1-800-327-2699.

(For those who may not be aware, Paul is the son of and the late Ralph Heins, founder of the pioneer Heins Honey Co. The company was once the only commercial honey bottler in Oregon, and one of the first in the Northwest. Paul continues to support the honey industry.)

Where else can beekeepers meet beekeepers? Check these:

• Oct. 20-22: Washington State Beekeepers Association, Mark 205 Inn, Vancouver, Wash. Phone: 1-206-254-1544, see article, page 1.)

• Oct. 21-Nov. 4: Tour of Australia/New Zealand sponsored by the International Bee Research Association. Information: Michael Rennaker, Agriculture Projects, Citizen Ambassador Program of People to People International, Spokane, Wash., phone 1-509-534-0430

• Oct. 28-29: Kansas Honey Producers Association, Best Western Holiday Manor, McPherson, Kan. Phone 1-316-241-5343.

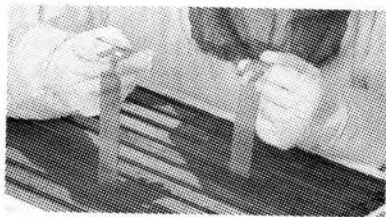
• Dec. 3-4: Oregon State Beekeepers Association, The Shilo Inn, Lincoln City, Or. More news in next Bee Line.

• Jan. 9-13, 1995: American Honey Producers Association, Eldorado Hotel Casino, P.O. Box 3399, Reno, Nev. 89505, phone 1-800-648-5966.

• Jan. 17-22, 1995: American Beekeeping Federation/National Honey Board, Marriott Hotel, Austin, Texas. Contact: ABF, P.O. Box 1038, Jesup, Ga. 31545; phone/FAX 1-912-427-8447. (Travel arrangements: Albany Travel, 1-503-967-1022, 1-800-327-2699.)

**Connie Petty, editor**

Varroa mites are becoming a larger problem. If they attack your bees, the financial losses can be devastating.



With a new self-hanging design and EPA registration, APISTAN is easier than ever to use.

But now you can protect it all with APISTAN® Strips. Compared to the cost of replacing an infested hive, APISTAN just makes good sense economically. It's 99.8% effective in eliminating Varroa mites, yet, it won't harm bees or contaminate honey. Also it's the only miticide approved in all 50 states. So look into APISTAN today or you may be looking at a huge loss.

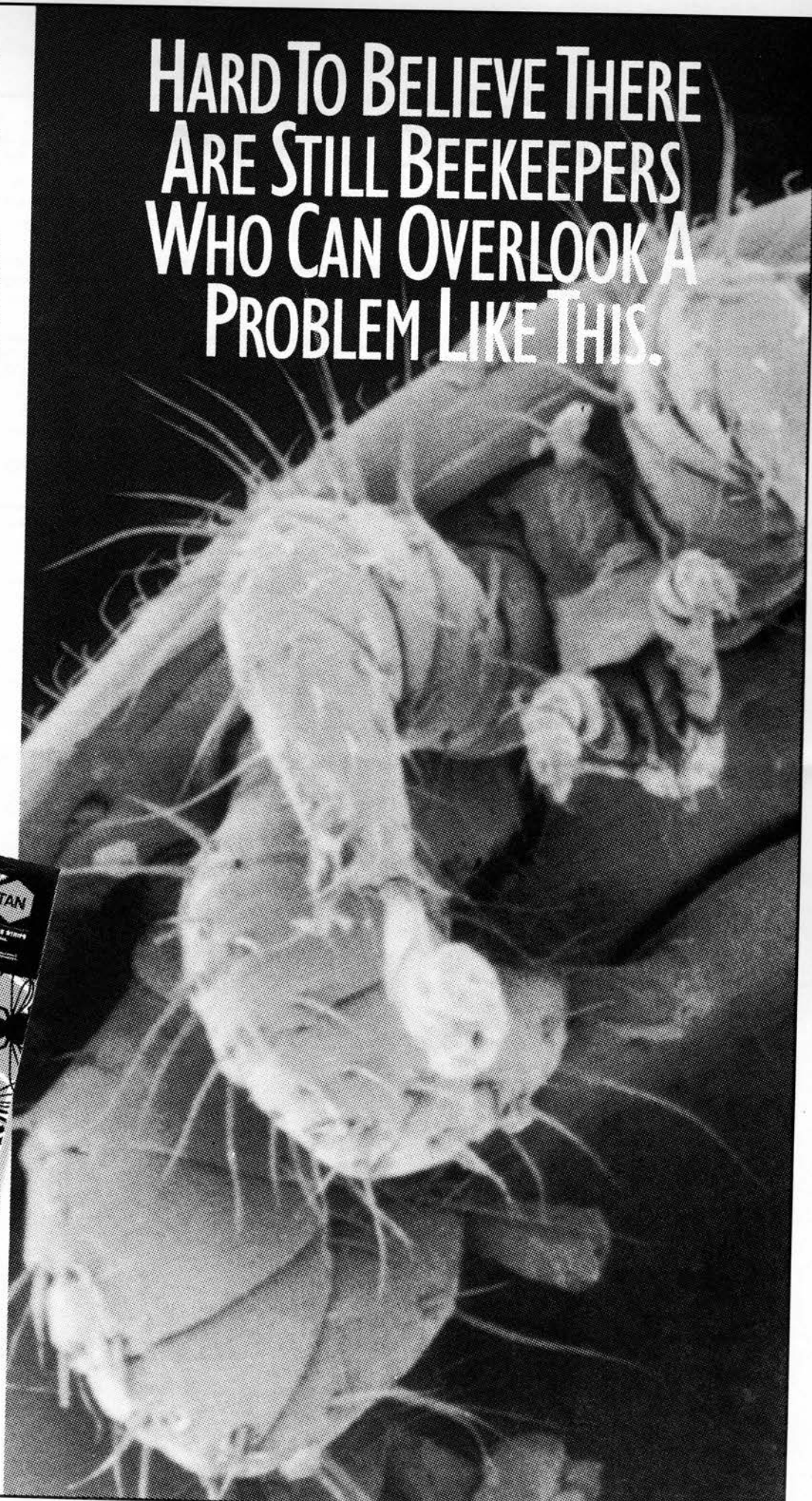


For more details or to view our informative video tape, call 1-800-527-0512.

Zaecon Professional Products: Sandoz Agro, Inc. 1300 E. Touhy Ave., Des Plaines, IL 60018. Apistan is a registered trademark of Sandoz Ltd. ©1994 Sandoz Agro, Inc.

Always read the label before using the product.

# HARD TO BELIEVE THERE ARE STILL BEEKEEPERS WHO CAN OVERLOOK A PROBLEM LIKE THIS.



# Northwest 1993-94 winter colony losses

Continued from page 1

minimum value of \$4-million dollars.

Tables 1 and 2 give the number of living colonies by date for the survey period for commercial beekeepers (Table 1) and semi-commercial beekeepers (Table 2).

Table 3 provides the summary of losses by year since 1989. Figure 1 shows living colonies by date, by beekeeper classification.

While it is nearly impossible to differentiate individual loss factors, it is readily apparent that the presence of mites is a major contributing element. Colonies left untreated, or improperly treated for mite parasitism will ultimately die. Most beekeepers have been forced to use chemicals for adequate mite control.

The only legal acaricides currently registered are: Apistan which has excellent activity against varroa, but not the honeybee tracheal mite; and menthol, used as a fumigant against *Acarapis woodi* (the tracheal mite).

Miticur, while still a legal material, has been withdrawn from the market by the manufacturer. Also recommended, but with limited research verification, is

the use of vegetable fat (Crisco) antibiotic extender patties for tracheal mite control.

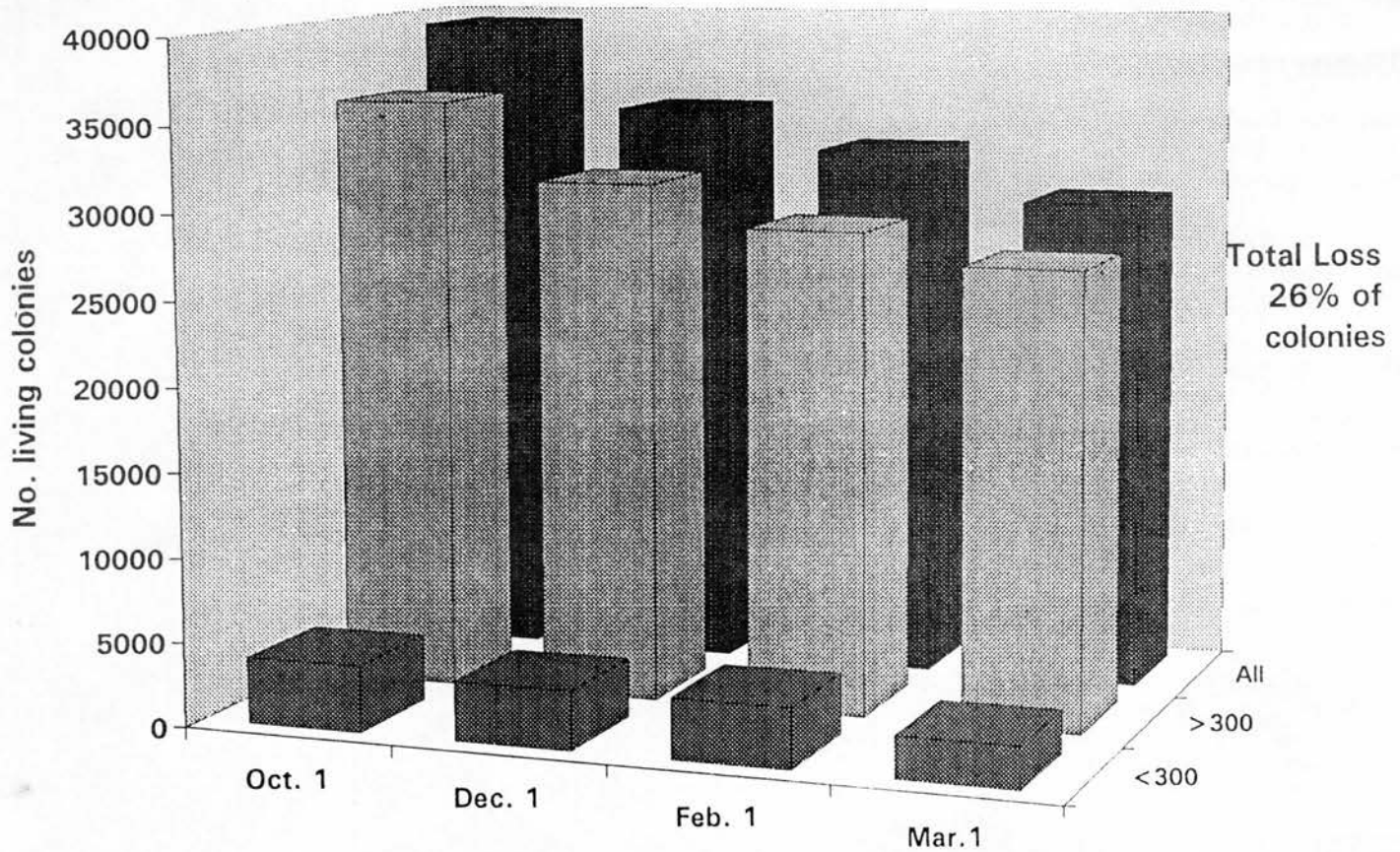
A view of the use patterns of the various chemical controls was obtained from this year's survey. For the commercial beekeepers (n=34) all but one have incorporated chemical mite control into their management programs.

The majority of beekeepers are using Apistan and Miticur (8). Unfortunately Miticur is no longer available, and beekeepers last year were using existing stock of the material. A number of beekeepers are using multiple materials in programs that target both varroa and the tracheal mite, i.e., menthol and extender patties. For semi-commercial beekeepers the use pattern of acaricides was similar with Apistan, the material most frequently used.

An interesting observation from the semi-commercial beekeepers was the larger number who did not treat for mites (13 out of 48). The overall loss for those beekeepers who did not treat was 466 dead colonies from a population of 693, or a 67 percent loss. This is nearly twice the loss suffered by the commercial category (36 percent).

This year's survey again provides evidence of the serious impact parasitic

**PNW Winter Loss 1993/94**



mites are having on the regional beekeeping industry. Winter mortality of colonies has increased and beekeepers are encountering ever increasing costs in order to maintain colony numbers adequate to provide pollination service to our regional agricultural industry.

While predicted pollination shortages have not yet occurred regionally, the likelihood of this increases.

Beekeepers are encouraged to realize that every healthy colony becomes a more valuable commodity in an industry that is experiencing reduced hive numbers.

I wish to sincerely thank all those beekeepers who took the time to participate in the survey. The information provided is most valuable in our understanding of the dynamics of a regional resource.

**Table 1—Comercial Hives  
Living Colonies by Date**

1 Oct 1993	1 Dec 1993	1 Feb 1994	1 March 1994
35,490	30,855	28,409	26,617

**Table 2—Semi-Comercial Hives  
Living Colonies by Date**

1 Oct 1993	1 Dec 1993	1 Feb 1994	1 March 1994
3,915	3,460	3,547	2,483

**Table 3 - Average Colony Winter Loss 1989 - 1994**

	Commercial Colonies (>300 ) Loss %	Non-Commercial Colonies (<300 ) Loss %	Number of colonies in survey
1994	25%	37%	39,405
1993	17	33	21,791
1992	22	13	17,418
1991	19	17	20,624
1990	21	22	25,352
1989	22	13	10,812
<b>AVERAGE</b>	<b>21.0 ± 2.8%</b>	<b>22.5 ± 10.3%</b>	

**Summary: Winter Loss 1993/94**

	Commercial (> 300 hives)	Semi-Commercial (< 300 hives)
Average # colonies on Oct. 1, 1993	1,044	82
Average # colonies on Mar. 1, 1994	783	52
Average colony loss	261 (25%)	30 (37%)
Total colonies in survey	35,490	3,915
Total colony loss	8,873	1,432
Number of beekeepers	34	48

Are your dues due? Check address label. Fill out and send form on page 11 with check to OSBA secretary or pay dues to your local branch association. The information and dues will be sent to the state secretary. The state association and local branches need members. You need to belong to beekeeper associations to be aware of problems and research.

## BE A BETTER BEEKEEPER

Read & See EVERY MONTH

- Beekeeping Basics
- Problems Solved
- Other Beekeepers
- Newest Products
- Marketing Tips
- Great Writers
- Much, Much More!



## Bee Culture

The Magazine For American Beekeeping  
Call 800-289-7668

For A Free Copy  
**BE A BETTER BEEKEEPER TODAY!**

HEITKAM  
HONEY  
BEES



PAT HEITKAM & FAMILY  
RT. 2 BOX 2542  
ORLAND, CA 95963  
1-916-865-9562

Queens, Bees,  
Honey & Pollination

## Snow Peak Apiaries

Quality Hive Products

Custom cut tops, bottoms and supers.  
We buy beeswax.

Franz and Audrey Yordy  
1-503-451-3752

34769 E. Lacombe Drive  
Lebanon Oregon 97355

## CUSTOM EXTRACTING CROP POLLINATION HONEY

**FOOTHILLS  
HONEY**

George and Susan Hansen  
30576 Oswalt Road  
Colton, Oregon 97017  
1-503-824-2265



Gibson Hill Honey Farm

OLIVER W. PETTY, Owner  
1033 Gibson Hill Rd. Albany, Oregon 97321  
1-503-928-7924

## NOSEMA

"The Quiet Killer"

Colonies fed FUMIDIL<sup>®</sup>-B can produce 20% MORE BROOD and 58% MORE HONEY!

You can treat package bees with FUMIDIL<sup>®</sup>-B for as little as 60 cents!

We also carry:  
Terra-Brood<sup>™</sup> Mix,  
Terramycin<sup>®</sup>  
Products, Apistan,  
Candle Supplies,  
Gift Boxes!



**MID-CON**  
8833 QUIVIRA ROAD  
OVERLAND PARK, KS. 66215  
(913) 492-1670  
(800) 547-1392  
FAX (913) 492-2742

**FAIRVIEW BEE SUPPLIES**

1033 Gibson Hill Road N.W.  
Albany, Oregon, 97321

*Oliver Petty & John Mespelt*

The mid-valley spot to shop for bee supplies

Hours: Noon to 6 p.m. Wednesday  
8 a.m. until 6 p.m. Saturday  
Or by appointment. Phone 1-503-928-7924 or 1-503-926-1850



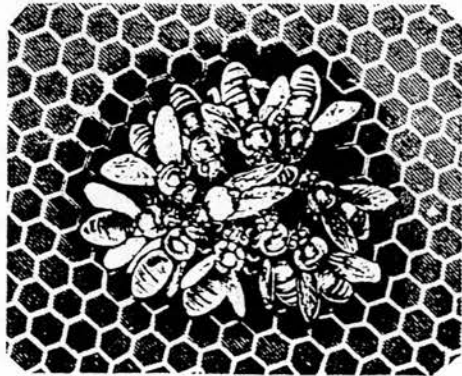
**Miller  
Wood  
Products**

**Glenn E. Miller**  
General manager/Partner

Manufacturers of  
Quality Pine Cutstock,  
F.J. Blocks, and Bee hives  
Frames, Tops, Bottoms, Nucs.

Bus. (503) 826-9266  
Fax (503) 826-2764  
Res. (503) 779-2853

2276 Avenue "H"  
P.O. Box 2414  
White City, OR 97503-8481



**GLORYBEE**

120 N. Seneca Rd. • Eugene, OR 97402  
TOLL FREE NUMBER 1-800-456-7923

**FREE BEE SUPPLY CATALOG**

Complete Line of Beekeeping Supplies  
Candle Making Supplies \*\*\* Honey Stix  
Nutritional Supplements  
Beauty Products



For local calls - 689-0913

**BEES &  
BEEKEEPING  
SUPPLIES**



**RUHL BEE SUPPLY**

1-503-256-4231  
Ed & Sheryl Johnson

12713-B N.E. Whitaker Way  
Portland, OR 97230



**GLENN APIARIES**

Italian and Carniolan Queens

Send for information on how our breeding  
program helps you keep better bees.



Top Quality, Fertile and  
Guaranteed to arrive  
Alive and Healthy

**GLENN APIARIES**  
P.O. Box 2737

Fallbrook CA 92088  
Phone/Fax (619) 728-3731



Read - Advertise

**THE SPEEDY BEE**

The Beekeeper's Newspaper

\$13.25 for OSBA Members

FREE Sample Copy

The Speedy Bee • P.O. Box 998 • Jesup, GA 31545



**Gibson Hill Honey Farm**

**OLIVER W. PETTY, Owner**

1033 Gibson Hill Road N.W. Albany, Oregon 97321  
1-503-928-7924

## Honey producers to meet in Reno

The 26th convention of the American Honey Producers Association will take place Jan. 9-13 at the Eldorado Hotel Casino in Reno, Nevada.

The meeting is open to all beekeepers, supply dealers and others interested in beekeeping, pollination and the production of honey.

The convention begins Monday, Jan. 9 with an executive committee meeting and possible ski or sightseeing tours of the Reno/Lake Tahoe area. Committees will meet that evening.

General sessions and exhibits are scheduled through Thursday, with a banquet that evening. The convention will close Friday, with a meeting of executive committee and possible workshops.

Commercial space is available.

For more information, write: AHPA 1995 Convention, P.O. Box 584, Cheshire, Ct. 06410-0584, phone/FAX: 1-203-250-7271.

For hotel accommodations, phone 1-800-648-5966.

## Portland Beekeepers Association reorganizes, announces meetings

The Portland Beekeepers Association has reorganized and organizers welcome new members. Leaders are Marjorie Ehry, Cheryl Johnson, Torey Johnson, and Rosemary Marshall.

The group meets at 7 p.m. on the second Thursday of each month in the Clear Creek Mutual Telephone Company's Community Room in the Redland area near Oregon City.

Dues are \$25 per year, which includes membership in the Oregon State Beekeepers Association, and are payable at the October meeting.

The association welcomes all beekeepers, experienced, new or prospective — hobbyists and commercial alike. Programs will feature speakers, slides and videos, management topics, research, marketing and other current topics of interest to beekeepers.

On Oct. 13, Cheryl Johnson, owner of Ruhl Bee Supply, will speak on the problems and laws and regulations of keeping bees in the city. Joann Olstrom of Reedsport will speak on marketing honey at the Nov. 10 meeting.

Informal beekeeping conversation will follow the meetings. Refreshments of cookies, coffee and tea will be provided. A pop machine is available. Smoking is outside only.

Meeting dates are scheduled as follows: Oct. 13, Nov. 10, Dec. 8, Jan. 12, Feb. 9, March 9, April 13, May 11 and June 8. A picnic will be held in July, the date to be announced.

**When:** 7 to 9:30 p.m., second Thursday of the month.

**Where:** Clear Creek Mutual Telephone Company Community Room, (Redland area), 18238 S. Fischer Mill Road, Oregon City.

**Parking:** Next to telephone company or across street at Redland Grange. Meeting room is located on ground level (no stairs.) Use side entrance. Facilities include a handicap accessible restroom.

**Directions:** From I-205, take Park Place exit (between Clackamas and Oregon City exits). Turn right at the second light, on Redland Road. Go about 6 miles to the Redland Store. Turn left on Fischer Mill Road. Telephone company is on the right across from Redland Grange.

**Additional details:** Rosemary Marshall, 1-503-631-7313.

## American Beekeeping Federation and National Honey Board meet in January 1995 in Austin, Texas

Beekeepers attending the 1995 American Beekeeping Federation convention in Austin, Texas, will have an opportunity to learn more about the National Honey Board and its activities.

The early part of the federation's program will feature presentations by the Honey Board; at the end of the week, attendees can take part in either the Honey Board's winter meeting or ABF workshops and special interest sections.

The Austin Marriott at the Capitol will be the convention site. The 16-story hotel features 365 guest rooms with all the amenities associated with a first-class hotel, including an indoor-outdoor pool and a fully equipped health club.

Pre-convention activities begin Tuesday, Jan. 17, with the ABF Executive Committee meeting in the morning, various committees in the afternoon, and ABF Directors in the evening.

The general session will convene Wednesday morning and continue through Friday noon. The business meeting is set for Friday afternoon; the banquet, Friday evening. Saturday, Jan. 21, will be devoted to workshops and special interest sections and Honey Board meetings. Directors and the Executive Committee will close out the convention Sunday, Jan. 22.

Plans are being laid to make the Austin convention another "event not to be missed." Program chairman John Thomas, retired Texas A & M extension apiculturist, is assembling a list of top-notch speakers, workshops, and special interest sections.

Commercial and educational exhibits are being enlisted for the trade show. A special feature will be a display of a collection of more than 100 historic bee smokers owned by Paul Jackson, the Texas chief bee inspector.

Beekeepers across the continent are preparing examples of their finest honey and beeswax to enter in the American Honey Show. Trophies will be presented in 13 classes, plus a best-of-show trophy.

An important part of any ABF convention is the social interaction - the opportunity to meet and greet beekeepers from across the country and to learn over dinner, or just a cup of coffee, how they approach the opportunities and problems common to all beekeepers. As the "Live Music Capital of the World," Austin has a wealth of nightspots suitable for an evening of entertainment.

More information will be published as the convention approaches. For information about the honey show, the exhibit and advertising opportunities, write: ABF, P.O. Box 1038, Jesup, GA. 31545, phone/fax 1-912-427-8447.

### NHB offers kits to promote honey/honeybees at fairs, shows

The National Honey Board is offering a "Trade Show and Exhibit Planning Kit" available to beekeeping group's sponsoring booths at fairs and other exhibitions.

Also, a media kit is available that includes the story on pollination, news releases, summer recipe tips and a new recipe leaflet, "Bringing You Nature's Bounty Is Our Line."

To order, contact Tracy Baker, National Honey Board, 421 21 Ave. No. 203, Longmont, Colorado 80501. Or, phone 1-800-553-7162.



# That 1-pound jar of honey ...

Did you know that that one-pound jar of honey you just bottled came from 2 million flowers?

You may be bottling more one-pound jars these days since traditionally, it's the time of year consumers start using more honey.

To help with sales and promotion of , the National Honey Board offers the following information:

- There are an estimated 3.2 million colonies of bees in the United States.
- The "workers," or sexually undeveloped female bees, do all the work in the hive. Each worker has an average lifespan on 28-35 days in which she makes all of 1/2 of a teaspoon — about 3 drops — of honey.
- Worker bees must travel more than 55,000 miles and tap 2 million flowers to make a pound of honey.
- One tablespoon of honey has 64 calories.
- Honey doesn't need refrigeration; store it at room temperature. Should it crystallize, you can reliquify it by placing the jar in warm water. Or, place 1 cup of honey in a microwave-safe container at high power for 2 to 3 minutes — or until crystals dissolve — stirring every 30 seconds. Be sure not to boil or scorch.

— From the Kansas Honey Producers newsletter



# How to flavor honey

Should you want to make flavored honeys to use yourself or for gifts, it takes but a few minutes of mixing, a couple of hours of keeping yourself busy while the flavors meld, and then final straining. Start with a mild variety of honey such as alfalfa or clover, emptying it into a suacepan. The following amounts are enough to flavor each 1-pound jar (that's 1 1/2 cups, by the way):

**CITRUS HONEY:** Add 1 tablespoon freshly grated grapefruit, lemon, lime or orange peel. Heat mixture on low heat for 10 minutes. Let stand at least 2 hours. Strain and pour honey into original container or other jar with tight-fitting lid. (Note: Testers say that if you are making flavored honeys for gifts you may want to use fresh 8-ounce jars instead of the original containers, as about 2 tablespoons of honey is lost in the transferring and straining processes.)

**MINT HONEY:** Add 1/4 cup chopped fresh mint. Warm mixture on low heat for 10 minutes. Let stand at least 2 hours. Strain and pour into containers.

**GINGER HONEY:** Add 1 tablespoon julienned or minced fresh ginger. Warm mixture on low heat for 10 minutes, let stand at least 2 hours, strain and pour.

**ALLSPICE HONEY:** Add tablespoon whole allspice. Warm mixture on low heat for 10 minutes. Let stand at least 2 hours. Then heat mixture on low heat for 10 minutes a second time. Let stand overnight before straining and pouring into container.

**HOT HONEY:** Add 1 1/2 teaspoons dried hot crushed red pepper. Heat mixture on low for 10 minutes. Let stand 1 to 2 hours. Strain and pour honey into jar.

## Oregon State Beekeepers JOIN - OR RENEW NOW

*Send your \$15 dues today*

Make check payable to OSBA  
Send to OSBA Secretary-treasurer  
Phyllis Shoemake, 1874 Winchester N.W., Salem 97304

.....

**Honey board offers recipe leaflet, ideas for baking with honeybee-pollinated crops**

A new recipe leaflet - "Bringing You Nature's Bounty Is Our Line," is now available from the National Honey Board. The leaflet features recipes made from honeybee-pollinated crops including Honey Cranberry Butter, Back to Nature Cookies, and Honey-Kissed Fruit.

The brochure also describes the work of the honeybee in pollinating fruits and vegetables.

Beekeeping associations and assessment-paying supporters of the NHB can order up to 500 recipe brochures per year free of charge. Additional brochures are 5 cents each.

To order a brochure, write: National Honey Board, 421 - 21st Avenue, No. 203, Longmont, Colo. 80501, or phone 1-800-553-7162.

.....

**NEW MITE-RESISTANT STOCK**  
**\*ARS-Y-C-1 A Carniolan Breed**  
**Caucasian Midnight Starline**  
**Double Hybrids**  
**Queens & Package Bees**

**Write for free descriptive brochure:**

**HOWARD WEAVER & SONS, Inc.**  
**Rt. 4, Box 24**  
**Navasota, Texas 77868-9401**

**Phone: 1-409-825-7701 or 1-800-247-5520**  
**Fax: 1-409-825-7719. Fax hrs. 7 p.m.-5 a.m.**

## Who's Who...In The OREGON STATE BEEKEEPERS ASSOCIATION

### OFFICERS

#### President

John Mespel  
1830 Queen Avenue S.W.  
Albany, Or. 97321  
Telephone: 1-926-1850

#### Vice president

Dirk Olsen  
1037 North Albany Road N.W.  
Albany, OR 97321  
Telephone: 1-503-926-0443

#### Secretary-treasurer

Phyllis Shoemake  
1874 Winchester N.W.  
Salem, Or. 97304  
Telephone 1-364-8401

#### Past president

Marjorie Ehry  
19500 N. Highway 99W  
Dundee, Or. 97115  
Telephone: 1-864-2138

### REGIONAL REPRESENTATIVES

#### Central Oregon:

Bob Morgan  
3800 Benson Road  
The Dalles, Or. 97058  
1-298-5719

#### Eastern Oregon:

Dave Lefore  
Rt. 3 Box 207E  
Milton-Freewater, Or. 97862  
1-503-938-3286

#### Metropolitan Area:

Chuck Sowers  
4390 Lords Lane  
Lake Oswego, Or. 97304  
1-636-3127

#### North Coast:

Bob Allen  
P.O. Box 434  
Garibaldi, Or. 97118  
1-322-3819

#### South Coast:

Joann Olstrom  
6134 Maple Court  
Reedsport, Or. 97467  
1-271-4726

#### Southern Oregon:

George Steffensen  
1634 Fish Hatchery Road  
Grants Pass, Or. 97527  
1-474-4305

#### Willamette Valley:

Don Ames  
25222 Arnold Lane  
Elmira, Or. 97437  
1-503-935-1644

### COMMITTEE CHAIRMEN

Honey promotion: Joann Olstrom  
Nectar & pollen plants: Bertie Stringer  
Pollination: Don Kelley  
Laws & regulations: Fritz Skirvin  
Oregon State Fair: Walt Nichol

### APIARY ADVISORY BOARD

#### President

Bruce Yeager, 1-888-6833

#### Vice president

Bill Rufener, 1-324-2571

#### Members

Al Freeburne, 1-855-7243  
DeWayne Keller, 1-889-8279  
John Mespelt, 1-926-1850  
Bob Morgan, 1-298-5719  
Fred Van Natta, 1-585-8254

### Extension Entomologists:

**Dr. Michael Burgett**  
Department of Entomology  
Cordley Hall 2046  
Oregon State University  
Corvallis, Or. 97331-2907  
Telephone: 1-737-4733

#### Dr. Lynn Royce

Assistant/associate  
Department of Entomology  
Cordley Hall 2046  
Oregon State University  
Corvallis, Or. 97331-2907  
Telephone: 1-737-4733

## REGIONAL BRANCH ASSOCIATIONS

### Officers and Meetings

#### Coos County

Meets 7:30 p.m. third Friday (except December)  
Coquille Annex, Coquille

President: Gordon Starr, 1-503-396-4537  
Vice-president: Vernon Hone, 1-503-572-2721

#### Klamath County

Meeting dates and sites vary.

Call officers:

President: Ken Crow, 1-503-882-1893  
Vice president: Chet Hamaker, 1-503-882-2404

#### Lane County

Meets 7:30 p.m. second Tuesday;  
Public Employees Credit Union,  
1155 Chambers St., Eugene

President: Lee Zigler, 1-503-688-5675  
Vice president: Dan Miller, 1-503-747-7044  
Treasurer: Jim Sheridan, 1-503-344-1354  
Newsletter Ed.: Robin Gage, 1-503-746-0808

#### Portland Area

Meets 7 p.m. second Thursday  
Clear Creek Mutual Telephone Co.  
18238 S. Fischer Mill Road  
Oregon City

Information: Rosemary Marshall, 1-503-631-7313

#### Southern Oregon

Meets 7:30 p.m. first Monday;  
Bee-Complex, 565 Industrial Circle,  
White City

President: Rob Behrend, 1-503-664-3426  
Vice president: John Campbell, 1-503-664-4867  
Secretary: Lynne Behrend, 1-503-664-3426

#### Tillamook County

Meets 7 p.m. first Thursday;  
Fish & Wildlife Bldg.,  
4909 Third St., Tillamook

President: Bob Allen, 1-503-322-3819  
Vice president: Fritz Hoffman, 1-503-842-6856  
Secretary-treasurer: Gregg Cline, 1-503-842-6323

#### Tualatin Valley

Meets 7:30 p.m. second Wednesday  
PGE Building,  
Old Scholls Ferry Road & Murray,  
Beaverton

President: Bill Rufener, 1-503-324-2571  
Vice president: Jim Marshall, 1-503-642-3319  
Secretary: Lew Wolf, 1-503-251-5482  
Treasurer: PattiJo Campbell, 1-503-590-1336

#### Willamette Valley

Meets 7:30 p.m. fourth Monday;  
Room102, Building 40,  
Chemeketa Community College, Salem

President: Walt Nichol, 1-503-585-5705  
Vice president: Laurence Bower  
Treasurer: Fritz Skirvin, 1-503-581-9372

## Directory: The business of bees

### Keller's Apiary

4620 Hyline Road  
Ontario, Or. 97914  
Phone 1-503-889-8279  
Owners: Maxine, DeWayne,  
DeWayne, Katrina & Todd  
Family business: Honey,  
pollination services

### Wild Harvest Honey

20367 Long Road  
Blodgett, Or. 97326  
Phone 1-503-456-2631  
Owner: Kenny Williams  
Crop pollination, honey,  
beeswax candles

### Joann's Honey

3164 Maple Court  
Reedsport, Or. 97467  
Phone 1-503-271-4726  
Owner: Joann Olstrom  
Basic bee supplies and  
related books; honey  
and limited pollination.

### Mountain Meadow Honey

27997 Schiewe Drive  
Colton, Or. 97017  
Phone 1-503-824-3456  
Owners: Charlie Mock  
Nancy McSwane  
Crop pollination;  
honey production

### To be included in the Directory...

Please send your business card and the form below (or use a separate piece of paper with the following information):

Name of business: \_\_\_\_\_

Owner/owners: \_\_\_\_\_

Street Address: \_\_\_\_\_

City, state & zip: \_\_\_\_\_

Telephone number: \_\_\_\_\_

Service, what you sell or do: \_\_\_\_\_

Mail to:  
The Bee Line  
1033 Gibson hill Road N.W.  
Albany, OR 97321

## Classified Ad:

Please run this ad in the following issue / issues: \_\_\_\_\_

\_\_\_\_\_  
\_\_\_\_\_  
\_\_\_\_\_  
\_\_\_\_\_  
\_\_\_\_\_

Your name: \_\_\_\_\_

Address: \_\_\_\_\_

City: \_\_\_\_\_ State: \_\_\_\_\_ Zip: \_\_\_\_\_

Telephone: ( ) \_\_\_\_\_

Rate: Up to 30 words: \$2 for OSBA members; \$3 non-members per issue  
Make checks payable to OSBA (amount): \_\_\_\_\_  
Please send classified ad to: The Bee Line, 1033 Gibson Hill Road N.W.,  
Albany, Oregon, 97321; FAX 1-503-926-1500

## Membership and Publications

Membership in the Oregon State Beekeepers Association is open to anyone who has an interest in bees and beekeeping. You do not need to own bees or reside in Oregon to join.

	Amt. Enclosed	New?
OSBA Membership: \$15 per person. Includes 10 issues of the BEE LINE and a vote in all OSBA elections. If you belong to a local group, which one? _____ (Your local gets \$1 of your dues.)	_____	<input type="checkbox"/>

Foreign subscriptions are \$23.

25% Membership Discount on All Magazine Subscriptions:

American Bee Journal	1 yr. \$12.70	2 yrs. \$23.55	_____	<input type="checkbox"/>
Gleanings In Bee Cultures	1 yr. \$12.25	2 yrs. \$22.50	_____	<input type="checkbox"/>
The Speedy Bee	1 Yr. \$13.25	2 Yrs. \$25.25	_____	<input type="checkbox"/>

Name \_\_\_\_\_

Address \_\_\_\_\_

City \_\_\_\_\_ State \_\_\_\_\_ Zip \_\_\_\_\_

Please make checks payable to OSBA and send to:  
Phyllis Shoemake, 1874 Winchester NW, Salem OR 97304

**Classified - Want Ads**

**FOR SALE:** Honey processing equipment - Dakota Gunness Model 50 Decapper, \$1,000; Maxant 10-frame radial extractor w/stand, \$720; Kelley sump, stainless, water jacketed, \$200; Oberdorfer 1-inch honey pump, bronze w/mother, \$140; stainless decapping tank with stand, \$120; stainless liquefying tank, \$100; galvanized bottling tank with stand, \$100; Kelley galvanized wax melter w/stand, bucket, \$60; Pierce electric decapping knife, \$50.  
**WRITE:** Kermit Olson, 12550 SW Brookside Ave., Tigard, Or. 97223, or phone 1-503-639-7278.

**BEE SUPPLIES:** Open noon until 5 p.m. Wednesday and 9 a.m. until 5 p.m. Saturday, or by appointment, phone 1-503-928-7924 or 1-503-926-1850. Fairview Bee Supplies, 1033 Gibson Hill Road N.W., Albany.

---

---

Oregon State Beekeepers Association

*The Bee Line*

Connie Petty, editor  
1033 Gibson Hill Road N.W.  
Albany, Oregon 97321

Address Correction Requested

Non-Profit  
Organization  
U.S. Postage  
PAID  
Permit No. 692  
Salem, Oregon

*Phyllis Shoemaker  
1874 Winchester N.W.  
Salem, or. 97304*

17