

# The Bee Line

Volume 15  
Number 5

Newsletter of the  
Oregon State Beekeepers Association

July  
1991

## Just Send Money

by Marjorie Ehry

Have you ever been awakened in the middle of the night by a call from the Oregon State Police? It is certainly an experience I can do without. My thoughts went directly to family, hoping everyone was OK, then to anger, "This had better be good!"

The voice on the other end preceded with, do you still have bees and have you been moving them tonight, on Brooklake Rd. north of Salem? My answers were "yes" and "no, we haven't moved any tonight," this being one of those rare occasions reserved for sleep.

"One moment, I will let you speak with my husband"—after all, why should I be the only one awake! I heard him say, "No, but try Gary Seeley or Bob Ramsey; they have bees in the area." After a pause he hung up, handing me the phone. He said, "Gary had just arrived on the scene (police talk). Apparently 3 hives of bees had been dumped close to the freeway." Knowing Gary would have everything under control, I went back to sleep, relieved that the call hadn't been *bad* news (when you are a parent, your mind works that way).

The next morning, June 8th, having cleared the house of people, I poured the second cup of coffee, when the phone rang. The 1 am call was far from my mind; it was now 8 am and Bob Ramsey was on the other end and his first words were, "Now I know where Alan was last night—out moving my bees!" The three hives which Gary had straightened up and

moved out of harms way had belonged to Bob. He had no idea how the 3 hives had made their way to Brooklake Road in front of the Bingo gas station, but his first thought had been that his "buddy"

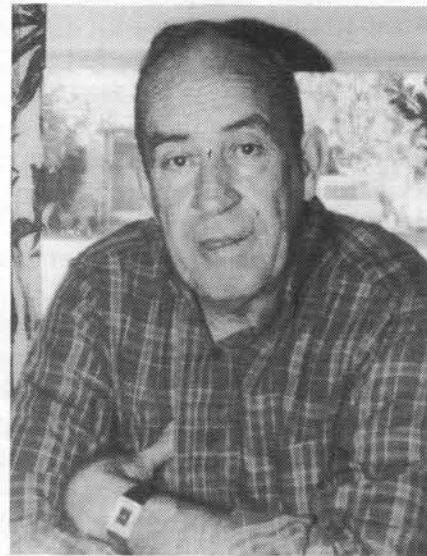
Alan Ehry, out of "the goodness of his heart" was bringing his bees home for him, from a crimson clover location, in Alan's backyard, as honey locations go, dumping them along the way... SURE, BOB!! He did ask if I would leave a note and have Alan check the bees to see if anyone had been tampering with them.

In the meantime, Bob went out to do the chores and move the cow. As he walked through the grass still covered with dew he looked toward the pasture surrounded by tall fir trees, and WHAT TO HIS WONDER, Ole Blue and bees weren't in the pasture! Now, Ole Blue is his '68 1 ton truck, loaded flat with 30 hives. Bob notified the state police that his truck had been taken. A couple nights before Bob had shuttled the bees out of the blueberries, about 1-1/2 miles from home, after a call from his grower telling him he was going to spray... but he wanted them back for the marionberries within a week. So we all understand why Bob hadn't tied the load down, and they did ride just fine.

Those of you who know where Bob lives will wonder how all this happened but for those who don't, he lives down a long dead end road lined with fir trees and brush and has three big dogs who greet everyone by loud barking... that is if they aren't asleep at the foot of his bed.

Now the best part of the story—for the last year or so the key hasn't worked, but Bob leaves it in the truck, lifts the hood, and starts Ole Blue with a screw driver. Whoever disturbed Ole Blue from her sleep

*Continued on page 2*



"Just send money!" says Bob

## OSBA HAPPENINGS

1991

- August 11 SUMMER PICNIC, 12:30 pm  
Fern Ridge, Eugene - Orchard Pt
- August 11 Executive Meeting, 10 am "in the  
park." Coffee and doughnuts  
provided
- Aug. 22 - Sept. 2 State Fair
- Dec. 6 & 7 OSBA Annual Convention, Salem

1992

Joint Oregon/Washington Convention  
Hosted by OSBA

that night didn't know her history but they must be given credit because they managed to start her and drive her out of the pasture, right through the fence, over the gate, hit the plow and a tree, with 30 hives of bees loaded flat, unsecured, and not one bark, in the dark of the night.

Having mastered the first task, the thief became aware that the gas gage read empty so off to the nearest all night station—BINGO! After putting \$20 in the seat tank, he was headed for freedom. The first clue that the load was not secured occurred when he exited the Bingo station, leaving a definite trail of 3 mad hives of bees. With mission in mind, he proceeded south on I-5 approximately 20 miles to the Santiam rest area, next to the river. This probably seemed like a good spot to either tie down the load or get rid of all those stinging #\*#!.

Well, we will never know what the plan was, but Bob had made it very easy for someone with a little knowledge of bees. Being a good Boy Scout, always prepared, he had left his hat, veil, coveralls, smoker, binders, bee net, tools and best of all, the "ropes," with Ole Blue and the bees.

By this time, with three more hives dumped at the rest area, the police radios were "abuzz" with reports of bees scattered along the freeway.

The time had come to get the Oregon Department of Agriculture involved. Jim Cramer, ODA bee inspector, arrived on the scene and immediately recognized the bees as belonging to Bob. There were 2 hives in the rest area and one at the river's edge. Jim reassembled the equipment and gathered the hat, veil, and other related items, then contacted Bob.

Jim said, "My first thought was that this was a couple guys on a joy ride." It was the second time Bob had been called to pick up bees this morning and he was beginning to wonder just how long this could go on. He did find his ropes strewn in the rest area, so he was under the impression that they had tried to tie the load down without luck, and left in frustration.

Remember when the truck was gassed up? Well, have any of you gassed up and forgotten to flip the switch on your tanks? This is just what happened to Ole Blue's friend. So Ole Blue had no choice but to sputter to a stop just south of the Halsey Exit on I-5. Ole Blue was then abandoned just a few short hours after being abducted from her quiet pasture.

The trail grew cold and Bob heard nothing about Ole Blue's fate for ten long days and nights. Then early one morning he received a call from "Larry's Towing." It seems Larry had been on vacation and when he returned he had Ole Blue and bees parked in his impound. Larry promptly called Bob to find out WHY he had not retrieved his property. Larry was told by the Oregon State Police when he picked up

Ole Blue, she was stolen. I will not go into the problem Bob had with the Oregon State Police, but something is lacking in the line of communication between department and taxpayers.

Bob was really glad to hear from Larry but the mood soon changed as Larry explained about towing and storage fees. \$\$\$ Looks like Larry came out like a champ. Yet, Bob did get a full tank of gas, and who knows, the bees may have picked up a little weight during their stay at Larry's Towing.

When asked if Bob had any comments, he replied, "Just send money!!!" and shook his head forlornly.

## Trade mission leads to big deals for small firm

Every now and then a company attends a trade show and amazing things start happening. Such is the case with Ace Distributing Group, a mom-and-pop food firm in Portland.

In the two years since Bettie Bishop and her husband Dave Egerton started selling their honey-flavored straws, business has more than doubled. Some of that business came about as a result of Oregon Trade Festival '90, a state-sponsored trade mission to Canada. Ace Distributing was one of about 30 Oregon companies that brought products to a trade show in Vancouver, British Columbia.

"We had a great response," says Bishop.

A series of serendipitous events followed.

At the trade show they met a distributor who began selling their products throughout Canada.

In April their Canadian distributor took their products to Grocery Showcase West in Vancouver. There, they met a fellow exhibitor from Kona Coffee, who offered to distribute their honey stix in Hawaii.

What's more, their Canadian distributor has plans to display honey stix at upcoming food shows in Toronto, Tennessee, and Florida.

And that's not all.

An exporter eyeing the products on display at Agricultural Development's Portland office like the look of the flavored straws and is now looking into selling them in Italy.

*The ODA  
Agriculture  
Quarterly,  
Spring Issue*



Bettie Bishop shows off her firm's honey stix.

## Solar electric fencer keeps bears out!

by Joann Olstrom

Sooner or later most beekeepers meet up with those four-legged black and furry monsters that scared Goldilocks—BEARS!

These destructive "tornadoes" leave tear-jerking, naughty-word provoking destruction of equipment, honey, and bees.

Bob and I have tried numerous fencing methods and a variety of fencers. The following system seems to work the best. We have even found places where Bruin has apparently tried to get in, gets stung by the fence and stamps its feet in anger but stays out.

The fence is 39" high farm fence with the 6" spacing, two strands of barbed wire, a solar-powered fencer, and a gate. Size of yard is determined by the number of hives—all kept at least 4 feet away from the fence. The fence can be built in a circle (tilt steel post slightly out) or a rectangle/square (may want 4x4's at the corners). A list of materials follows.

Solar fencers are always on, unless you are in an area where there is total darkness for more than 21 days. We noticed that battery-operated ones seem to run out about the time the bear came for lunch and few bee yards have electricity available. Solar fences are hot! Ask Bob—he accidentally touched it once.

If you have vandalism problems (by people) in your yards, you may need to hide the solar fencer in an un-covered brood chamber atop a hive, padlock it to something, etc.

On this system, the whole woven fence serves as an additional ground. Vegetation doesn't bother this fence system—as long as you keep it off the barbed wire. We found with the way the grass and blackberries grow out here that the five-strand—3 hot, 2 ground—fence was always shorted out. Without resorting to herbicides, it is nearly impossible to keep

the growth to a manageable non-shorting level on the strand fences.

After putting up your fence, tie a loose loop of nylon line from the lower barbed wire to top wire of farm fence. Then if bear tries to crawl through, he (or she) pulls hot wire on himself. OUCH!

Solar fencers are made by a variety of companies, are available from catalogs, farm stores, or Joann's Honey.

If a diagram is needed, contact Joann at 3164 Maple Court, Reedsport, Or 97467.

### Materials List:

1. Solar fencer, 2 screws, and a board to hang fencer on.
  2. Ground rod, clip, short pieces of ground and insulated wire as indicated with fencer instructions.
  3. 39" high, 6" square (with closer at bottom of fencing) woven/twisted farm fence (NOT the welded variety).
  4. 6 ft. steel fence posts.
  5. Two 4x4 treated posts 8 ft. long, if you are using a 4 ft. metal farm gate as we do.
  6. Four ft. metal farm gate and a piece of fencing wired to it to keep bear from crawling through.
  7. Medium weight weed eater string (or fish line).
  8. Plastic clips to attach barbed wire to metal posts and a few nail-on ones for wooden posts.
  9. Barbed wire enough for 2 trips around fence.
  10. Plastic spring-handle for barbed wire to complete circuit and let you open it without a shock.
  11. Odds and Ends:
    - Brace and bit to drill 2 holes in wooden post for gate "hinge screws" to crew into,
    - A wrench or two for gate installation,
    - Wire to attach fence to posts,
    - Nails, hammer, wire cutters
    - Torch-and-matches, etc. to solder fencer wires to fence,
    - Post driver, post hole digger,
    - Shovel, 2x4 to tamp dirt around 4x4 posts, etc.
- In some areas you may also want a chain and padlock to secure the gate.

### ADVERTISING RATES

Business ads, per issue:	
Business Card Size	\$7.50
Quarter Page	20.00
Half Page	35.00
Full Page	100.00

Classified ads, per 30 words:	
OSBA Member	\$2.00
Non-member	3.00

Deadlines are the 15th of the month before the ad is to appear. Make checks payable to the OSBA.

## 1991 Oregon State Beekeepers summer picnic

**Date** August 11, 1991  
**Where** Orchard Point Park at Fern Ridge Reservoir  
**Time** 12:30 pm – Snacks will be available at 11 for early arrivals

Lane County Beekeepers Association is sponsoring in part and are providing donuts, drinks, and dessert. Park features game areas, horseshool pits, swimming, concessions, sailboard rentals, boat ramps, marina, paddle boats and jet ski rental.

We have reserved a private picnic area – Unit #3 – Park is open from 8 am to 7 pm. Picnic is a potluck (everyone is responsible for bringing their own table ware.)

A **Beekeeper Flea Market** is also featured. We will have a table for you to display used beekeeping equipment that you would like to bring and sell. If interested please label each item with your name and price.

Please Note that there is a \$2 per vehicle admission fee!

**Beekeepers are encouraged to bring the entire family for a full day of fun and fellowship!**

## Cookbook ready for fair

Marge Davenport of The Paddlewheel Press, Tigard, is publishing an Oregon Honey Cookbook with the endorsement of the OSBA, and it is to be ready for the fair.

The National Honey Board also has provided much of the materials to be used. Paddlewheel Press has offered to OSBA \$250 on publication and another \$250 when sales reach 5000 copies. Members may purchase copies at wholesale for resale.

## 1991 Honey Queen program out

The Honey Queen Program disbanded after much thought on the part of the committee, executive officers and Terry Flinn, the 1991 Oregon Honey Queen.

Terry is a full time student at OSU and plans to

graduate in 1992. The demands as Queen are very time-consuming, making it impossible for her to continue.

We appreciate the efforts made by Terry and the committee members Joan Heater and Leslie Kuenzie. Because of the time lapse it was the decision of the OSBA officers to discontinue the program for 1991.

## News of Apiculture at OSU

Professor Mike Burgett (burg/it) returned during March from Thailand, where he made arrangements for his doctoral student, Miss Oy, to conduct her thesis research. She will be at Chiang Mai University later this year working in the general area of brood mite pests of honey bees. More specifically, Oy will study defensive mechanisms of the dwarf bee, *Apis florea*, against *Eugarroa* mites. Oy had earlier studied *Tropilaelaps*, the most damaging honeybee mite, for her M.S. degree.

Mike now has two graduate students from Indonesia working on their M.S. degrees. Mr. Kuntadi is studying queen egg-laying cycles as influenced by queen nutrition while Mr. Kuswadi is looking at grooming behavior of honeybees in relation to mite removal.

Dr. Burgett is also screening synthetic pyrethroid miticides. He remains convinced that, within five years, *Varroa* will be a much more serious problem for us than tracheal mite is now. OSU recently got official permission from ODA to maintain *Varroa*-infested colonies in free-flight status for research, and Mike is looking for infested colonies to take to the Bee Lab.

The Lab's scale hive II made phenomenal daily gains in weight during mid-April but lost its surplus in later weeks of cool and showery weather. As with its predecessor, the hive is kept with minimum management: no feeding or medication, hive bodies are reversed twice per year, and honey supers are left on the hive through the winter.

The next BEE LINE will report, for the first time, on research being done at OSU on captive mating of honeybee queens.

– WHR –

## Bee plants in the garden

**Snowberry**

By B.A. Stringer

One way to simplify your garden chores is to select plants native to Oregon in your landscaping. They are well adapted to local conditions, need little care and maintenance, and some are also valuable bee forage.

Snowberries are native to the northwest and have a comparatively long bloom period from June to August. Although pollen collection has not been observed from these flowers, they are the source of a nectar flow throughout their bloom. Small white or pink flowers arranged in pairs yield nectar with a sugar concentration around 50%, and are very attractive to honey bees.

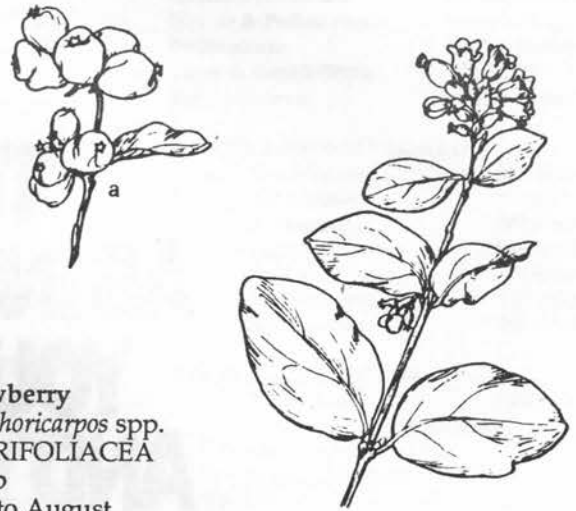
These native shrubs, besides being ornamental, may provide your bees with a light nectar flow when little else is in bloom. Look for the common *Symphoricarpos albus* which is abundant in open woods of western Oregon.

Snowberries bear grey-green leaves on small twiggy shrubs which offer shelter to wildlife. They are deciduous and form conspicuous white berries in fall which often last through the winter if not eaten by birds. Winter identification of the plants is easy because of the many white berries on the bare branches.

Snowberries are botanically classified in the Caprifoliaceae, or Honeysuckle family. Flowers and fruits of these plants are carried in pairs, and *Symphoricarpos* means "to bear together - fruit." These natives are particularly valuable because of their long nectar flow. If there are woods near your apiary, take a look for snowberries. You can start some from suckers or offshoots for your garde, and watch the bees working the flowers from June until August.

If you are interested in using native plants in landscaping, a comprehensive guidebook is *Gardening with Native Plants of the Pacific Northwest* by Arthur R. Kruckeberg. Dr. Kruckeberg is a botanist at the University of Washington, who has specialized in the flora of the Pacific Northwest for over thirty years.

B.A. Stringer is co-author of *Nectar and Pollen Plants of Oregon and the Pacific Northwest*, an illustrated dictionary of northwest bee plants. It is available from Honeystone Press, PO Box 511, Blodgett, OR 97326, for \$11.95 postpaid.

**Snowberry***Symphoricarpos* spp.

CAPRIFOLIACEA

Shrub

May to August

White, pink

n: Western Oregon and Blue Mountains

Common species is *S. albus* (L.) Blake, abundant in open woods of western Oregon, which may yield a light flow June to August. Nectar sugar concentration 47-58%. Pollen collection not observed.

## News from Washington State

From WSBA President Bob Zahler it's been learned that a second referendum on forming a Honeybee Commission, taken last November, did not pass. More than enough beekeepers (78%) were in favor of the Commission, but less than the necessary 2/3 of colonies represented by beekeepers were in favor of passage. At the next annual meeting the Association will decide if and how another campaign for passage will be undertaken.

Bob has heard numerous reports of Washington beekeepers losing 1/3 to 1/2 of their colonies in the past winter. The situation was frequently likened to the winter of '89/'90 regarding losses.

The Association's newsletter will be changed to a 6 or 8 page issue coming out every other month, to be edited by Doris Parker. People interested in being a member of WSBA or getting their newsletter can contact Treasurer Alice Bounds, PO Box 602, Toppenish, WA 98948.

# THINK OF IT AS INSURANCE FOR YOUR WORKERS AND YOUR PROFITS.



Now there's a convenient way to keep Varroa mites from hurting your investments because APISTAN® strips have EPA registration and are widely available wherever apiary products are sold. A sturdier, new self-hanging design means APISTAN strips can be installed without tacks or nails. But APISTAN still contains the same effective ingredient that kills Varroa mites. All without harming your bees when used as directed. So make it a policy to protect your hard workers. Pick up APISTAN now. Or simply call 1-800-527-0512 for more details.



With a new self-hanging design and EPA registration, APISTAN is easier than ever to use.



©1990 Zoexon. APISTAN is sold by Zoexon Corporation, a Sandoz Company, 12200 Denton Drive, Dallas, Texas 75224. Call 1-800-527-0512 for more information.

APISTAN is a trademark of Sandoz Ltd. Always read the label before using the product.

## Who's Who in Oregon Beekeeping

### 1991 OSBA OFFICERS

**Pres:** Marjorie Ehry 864-2138  
19500 N Hwy 99W  
Dundee, OR 97115

**Vice Pres:** Richard Turanski 689-0913  
PO Box 2744  
Eugene, OR 97402

**Sec/Treas:** Phyllis Shoemake 364-8401  
1874 Winchester NW  
Salem, OR 97304

### REGIONAL REPRESENTATIVES

**Willamette Valley:**  
Don Ames 935-1644  
25222 Arnold Lane  
Elmira 97437

**North Coast:**  
Bob Allen 322-3819  
PO Box 434  
Garibaldi 97118

**South Coast:**  
Bruce Yeager 888-6833  
6833 Joe Ney/Davis  
Coos Bay 97420

**Central Oregon:**  
Bob Morgan 2985719  
3800 Benson Road  
The Dalles, OR 97058

**Eastern Oregon:**  
Danny Bade 938-5378  
Rte 2, Box 278  
Milton Freewater, OR 97862

**Southern Oregon:**  
George Steffensen 474-4305  
1634 Fish Hatchery Road  
Grants Pass, OR 97527

### AFFILIATE OFFICERS

**Coos County**  
**Pres:** John Shank 269-5862  
**Sec:** Becky Lieper 267-5089

**Tualatin Valley**  
**Pres:** Otto Wenzloff 206-576-0558  
**VP:** Mark Johnson 621-3137  
**Sec:** Jim Marshall 642-3319  
**Treas:** Paul Liddell 397-3830

**Southern Oregon**  
**Pres:** John Cambell 664-4867  
**VP:** Bob Conlogue 899-8961  
**Sec:** Dennis Morefield 535-6050

**Portland**  
**Pres:** Lewis Morgan 775-2796  
**VP:** Frank Courtway 761-2961  
**Sec:** Carol & Scott  
McConnachie 656-4241

**Klamath**  
**Pres:** Ken Crow 882-1893  
**VP:** Chet Hamaker 882-2404

**Lane County**  
**Pres:** Lloyd Gordinier 344-5851  
**VP:** Glenn Miller 937-2070  
**Sec:** Christine Erwin 942-7061  
**Treas:** Jim Sheridan 344-1354

**Tillamook County**  
**Pres:** Bob Allen 322-3819  
**VP:** Fritz Hoffman 842-6856  
**Sec:** Ed Klock 368-5312

**Willamette Valley**  
**Pres:** Darrell Gulstrom 859-2103  
**VP:** Gene Barr 364-6536  
**Sec:** Kathy Hantke 390-6345  
**Treas:** Fritz Skirvin 581-9372

### OSBA COMMITTEES

**Honey Promotion:** Joann Olstrom  
**Nectar & Pollen Flora:** Bertie Stringer  
**Pollination:** Dan Keeley  
**Laws & Regulations:** Fritz Skirvin  
**Honey Queen:** Joan Heater

### APIARY ADVISORY BOARD

**Pres:** Bruce Yeager 888-6833  
**VP:** Bill Rufener 324-2571  
Al Freeburne 855-7243  
DeWayne Keller 889-8279  
Fred Van Natta 585-8254  
John Mespelt 926-1850  
Bob Morgan 298-5719

### STATE BEE INSPECTOR

David Turner 378-3774  
Department of Agriculture  
635 Capitol Street NE  
Salem, OR 97310

### EXTENSION ENTOMOLOGIST

Dr. Michael Burgett 737-4896  
Department of Entomology  
Oregon State University  
Corvallis, OR 97331

**September  
is  
NATIONAL  
HONEY MONTH**

## Local Group Meetings

### COOS

Beekeepers gather at the Coquille annex, next to the Extension Service Office, at 7:30 pm on the third Friday of each month except Dec.

### KLAMATH

Meeting places and dates vary. Call either of the officers for particulars.

### LANE

Meets the second Tuesday of each month at 7:30 pm in the Public Employees Credit Union Bldg, 1155 Chambers St, Eugene.

### PORTLAND

Meets in the Oregon City branch of Far West Federal Bank on McLoughlin Blvd, 7:30 pm, the fourth Monday of each month.

### SOUTHERN OREGON

Meetings are the first Monday of the month at 7:30 pm in the Ag Extension Auditorium on Maple Park Dr. Medford.

### TILLAMOOK

Meets the third Tues. of each month at 7:30 pm at the Dept. of Fish and Wildlife, 4909 Third St.

### TUALATIN

Meetings are the first Wednesday of each month during the school year at Rock Creek Campus of Potland Com. College, at 7:30 pm in Bldg. #3.

### WILLAMETTE

Beekeepers cluster in Rm 32B at Chemeketa Community College on the fourth Monday of each month from 7:30 to 9:00 pm.



### CUSTOM EXTRACTING CROP POLLINATION HONEY

George and Susan Hansen  
30576 Oswalt Rd.  
Colton, Oregon 97017  
(503) 824-2265

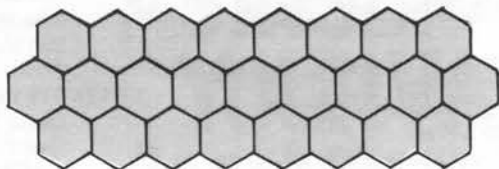
**SUMMER PICNIC**  
**August 11, 1991**  
**Fern Ridge**  
**Eugene**

# Let Dadant Help

## BUILD YOUR BEEKEEPING ON A SOLID FOUNDATION

but if you prefer plastic foundation . . .

### We've Got The Best



Our new PLASTICELL foundation is better than any other plastic foundation on the market. It's had to stand up to close scrutiny, the kind of scrutiny expected of someone who's been an innovator in the Beekeeping industry for over a hundred years.

## Take A Closer Look...

YOU'LL SEE YOU'RE GETTING  
MORE FOR YOUR MONEY!

- PLASTICELL is injection molded to tight Dadant standards
- Less expensive or no more expensive than other plastic foundations on the market
- Available coated or uncoated PURE beeswax coating

Other Fine Foundations Include

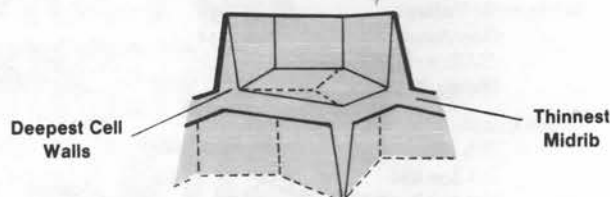
Medium Brood

Crimp-Wired

Cut-Comb Honey

Thin Surplus Foundation for Section Boxes

### PLASTICELL INJECTION MOLDED TO PERFECTION



- Maximum honey production with or without a wax coating
- Uniform cell dimensions throughout the foundation
- Deeper cell walls for better bee acceptance
- No excess plastic where it's not needed
- No stretched cells
- No bulky cell edges No wall loss
- No excessive midrib plastic waste

## DURAGILT

Duragilt is the finest product in the Dadant line of fine quality-100% pure beeswax foundations. A tough inner core of plastic is coated on both sides with pure beeswax, bonded through the plastic base from side to side and then precision milled with the imprint of the worker-sized cells. Duragilt is then further reinforced with metal edges that extend up into the top bar of the frame as well as down into the groove of the bottom bar. Communication holes are provided along the lower edge of the foundation to provide the natural communication openings.

### ORDER NOW!

"Research has found that frequent replacement of old combs with new foundations promotes increased honey yields."

## Dadant Quality Foundation

the foundation you can trust for perfect combs every time

DADANT & SONS, INC.,

DURHAM, CA 95938-0178  
FRESNO, CA 93747

Ph. 916/893-0921  
Ph. 209/292-4666





# Miller Wood Products

Glenn E. Miller  
General Manager/Partner

Manufacturers of  
Quality Pine Cutstock,  
F.J. Blocks, and Bee Hives,  
Frames, Tops, Bottoms, Nuc's.

Bus. (503) 826-9266  
Fax (503) 826-2764  
Res. (503) 779-2853

2276 Avenue "H"  
P.O. Box 2414  
White City, OR 97503-0414

# BEES & BEEKEEPING SUPPLIES



## RUHL BEE SUPPLY

12713 Whitaker Way  
PORTLAND, ORE. 97230

Ed & Sheryl  
Johnson

FREE Catalog

(503) 256-4231.

- Italian Package Bees and Queens
- Pollination
- Honey



## Tollett Apiaries

JOHN H. & LORALE TOLLETT

4422 Honey Lane  
Millville, CA 96062  
Phone (916) 547-3387

### ACTION BOTTLE & CONTAINER



Queenline Jars  
now available

## RYCO PACKAGING

All Sizes Available

- GLASS PLASTIC - Bottles, Jars, Caps, Pails, Specialty Products
- CLOSURES - Metal & Plastic

Honey Bears

Largest stock in the Northwest  
Catering to hobbyists and commercial beekeepers  
7926 NE Killingsworth-----255-5057

## Italian and Carniolan Queens

Prices effective May 1

SUMMER 1991

- 1-5.....\$8.25
- 6-24.....\$7.00
- 25-99.....\$6.50
- 100 -299...\$5.50

Mark or clip 50¢

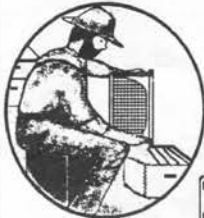
Top Quality, Fertile and  
Guaranteed to arrive  
Alive and Healthy

Fumidil B treated  
Preventative Mite Treatment  
Shipped Post paid

BREEDER QUEENS \$150.00

### GLENN APIARIES

40521 De Luz Road  
Fallbrook, CA 92028-9706  
(619) 728-3731



## GLORY B BEE BOX, INC

120 N. Seneca Rd. • P.O. Box 2744

Eugene, OR 97402

(503) 689-0913



BUYING HONEY & BEES WAX  
SELLING BEEKEEPING SUPPLIES



WRITE FOR NEW 1991 CATALOG

## GOOD HELP HARD TO FIND?

Our help doesn't fade!

THE CHOICE IS YOURS

•067 Wood guard oil finish, won't chip, peel or fade;  
easy to apply and you can paint over it too! Will preserve your hive up  
to 8 years. \$21.00 plus postage



Brush some on at the Root Dealer Nearest you.

Quality is hard to find.

Stick with Root.



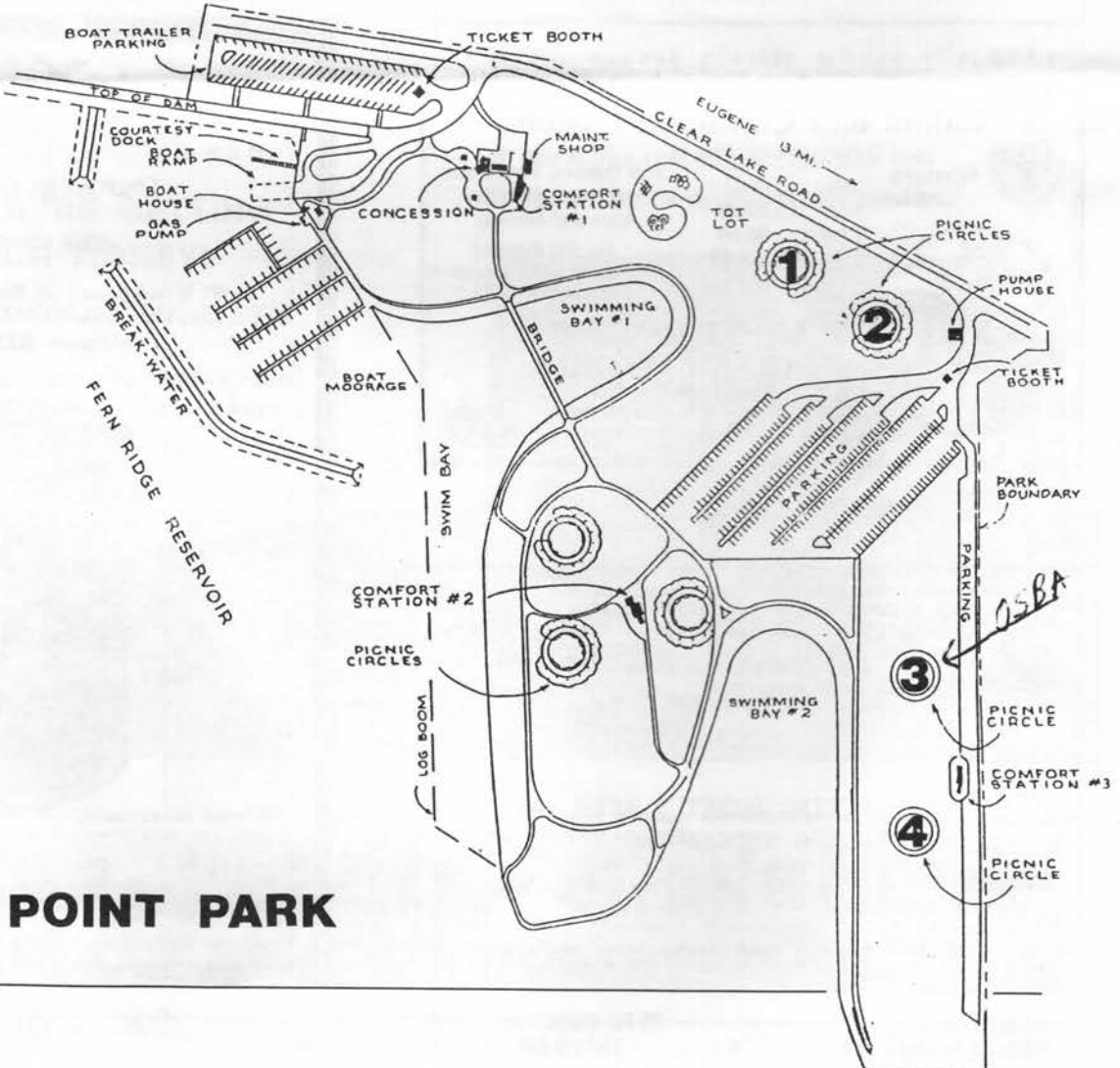
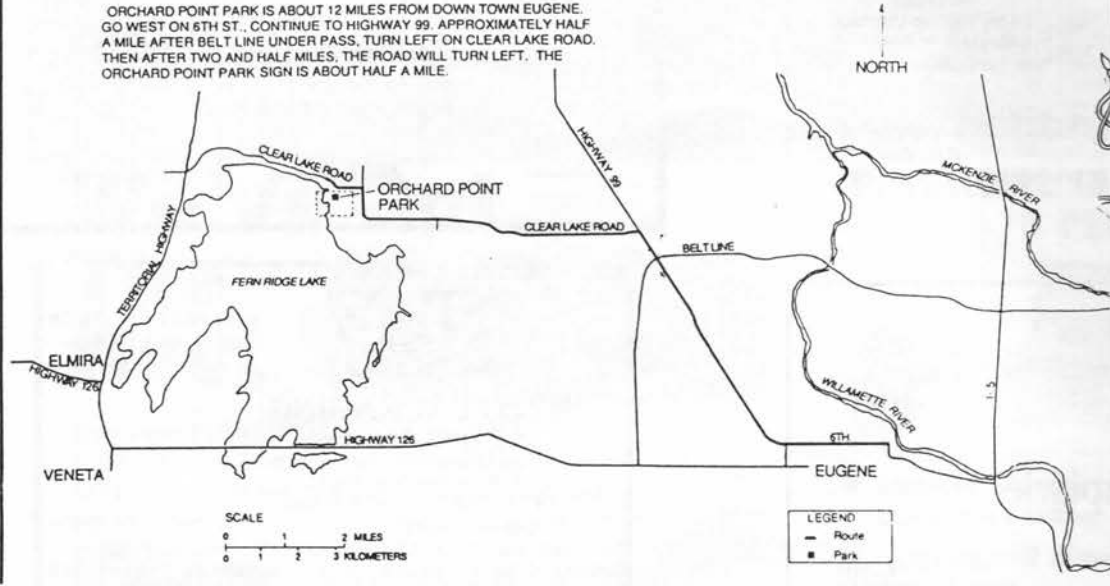
call 1-800 BUY ROOT



# Directions to the 1991 picnic at Fern Ridge Reservoir—

## FINDING ORCHARD POINT PARK

ORCHARD POINT PARK IS ABOUT 12 MILES FROM DOWN TOWN EUGENE. GO WEST ON 6TH ST., CONTINUE TO HIGHWAY 99. APPROXIMATELY HALF A MILE AFTER BELT LINE UNDER PASS, TURN LEFT ON CLEAR LAKE ROAD. THEN AFTER TWO AND HALF MILES, THE ROAD WILL TURN LEFT. THE ORCHARD POINT PARK SIGN IS ABOUT HALF A MILE.



## ORCHARD POINT PARK

# It's a Kick!




August 22 through September 2, 1991  
 State Fairgrounds, Salem, Oregon

**Snow Peak Apiaries**  
*Quality Hive Products*

Custom cut tops, bottoms and supers  
 We buy beeswax

Franz and Audrey Yordy 2733 S. Main  
 (503) 451-3752 Lebanon, OR 97355

Read - Advertise



**THE SPEEDY BEE**  
 The Beekeeper's Newspaper

\$15.75 per year (\$11.75 thru OSBA)

Write for a FREE Sample Copy:  
 The Speedy Bee • PO Box 998 • Jesup, GA 31545

**Auction Masters**  
 specializing in auctions for  
**BEEKEEPERS**

ALAN J. EHRJ  
 Commercial Beekeeper & Auctioneer  
 (503) 864-2138  
 19500 N. Hwy 99W • Dundee, OR 97115

## Membership and Publications

Membership in the Oregon State Beekeepers Association is open to anyone who has an interest in bees and beekeeping. You do not need to own bees or reside in Oregon to join.

	Amt Enclosed	New?
OSBA Membership: \$15 per person. Includes 10 issues of the BEE LINE and a vote _____ in all OSBA elections. If you belong to a local group, which one? _____ (Your local gets \$1 of your dues.)	\$ _____	<input type="checkbox"/>
<b>25% Membership Discount on All Magazine Subscriptions:</b>		
<i>American Bee Journal</i> 1 yr \$10.80, 2 yrs \$20.70	\$ _____	<input type="checkbox"/>
<i>Gleanings in Bee Culture</i> 1 yr \$10.45, 2 yrs \$19.15	\$ _____	<input type="checkbox"/>
<i>The Speedy Bee</i> 1 yr \$11.75, 2 yrs \$22.25	\$ _____	<input type="checkbox"/>

If you want subscriptions sent to an address other than that on your check, include your name and address with this form:

\_\_\_\_\_

\_\_\_\_\_

\_\_\_\_\_

Please make checks payable to OSBA and send to: Phyllis Shoemaker, 1874 Winchester NW, Salem, Oregon 97304

**CLASSIFIED ADS**

**Honey:** white to amber, by the bucket or barrel, any quantity. Ready to bottle. Call for current prices. Bee Sweet Honey Company, 503-357-8805, Forest Grove. 15-8

**For Sale:** 100 deep supers with drawn combs. Very good condition @ \$12 ea. Kenny Williams, 456-2631. 15-5

**Misc. Equipment:** Cowen 36 frame parallel extractor, near new, Kelly, single wall stainless 20 gal. sump tank w/float switch \$55. Dadant 1000 lb. stainless honey tank, 2" outlet, \$80. Evening phone 509-965-5614, Ron Wickstrom, Yakima. 15-6

**Misc. Equipment:** 30 frame radial extractor with electric motor and stand. Excellent condition, \$275. Heavy duty honey tanks with lids and gates, 50 gal. \$30, 2 - 20 gal. \$7.50 ea. 40 - 5 gal. honey cans .30 ea. 30 new 40-lb. round cans with large lids, \$1.50 ea. New 1 1/2" steel honey gate, \$12. 503-364-9701, Salem. 15-7

**Keep Bears Out** of your beeyards. Parmak 6 V. solar electric fencer works, \$163.95, includes UPS to your door. Joann's Honey, 3164 Maple Ct. Reedsport, OR 97467. 15-7

**Attention Beekeepers:** Do you have a grower that you would like to have receive the BEE LINE? If so, please forward \$7 per name to the Bee Line and the name will be placed on our mailing list for 1 year. This

is a special offer available only to OSBA members to inform growers of beekeeping concerns. 15-12

**Custom Extracting:** Fast service. 12¢ per pound. 792-3523 Salem, Seeley & Son Apiaries. 15-8

**We Buy, Sell** clean and dry pollen. Give us a call for your needs. Seeley & Son Apiaries, 503-792-3523. 5-11

**Summer Picnic****August 11, 1991**

Orchard Point at  
**FERN RIDGE, EUGENE**

Hosted by  
**Lane County Beekeepers**

**Summer Picnic****August 11, 1991**

Oregon State Beekeepers Association  
**BEE LINE**  
PO Box 906  
Lafayette, OR 97127

Forwarding and Return Postage Guaranteed  
Address Correction Requested

Non-Profit  
Organization  
U.S. Postage  
**PAID**  
Permit No. 692  
Salem, Oregon

SHO-04/92A  
PHYLLIS SHOEMAKE  
1874 WINCHESTER N.W.  
SALEM, OR 97304

If you label reads 6/91 or earlier, please renew your membership. See page 11 for renewal form