

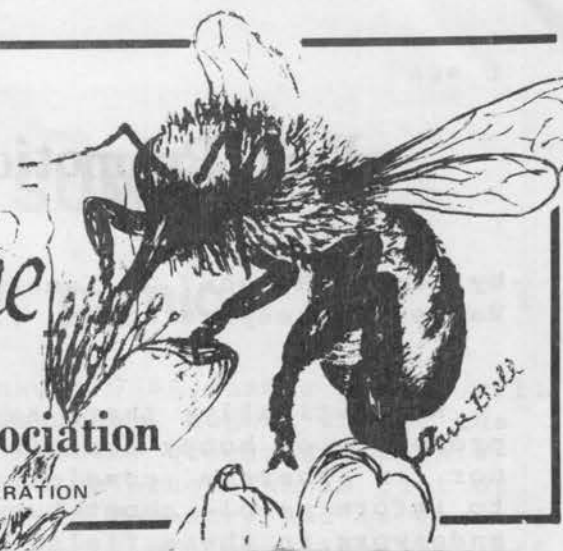
President  
 Gene Garner  
 1375 S. 2nd St.  
 Springfield, OR 97477  
 746-5972

Secretary-Treasurer  
 John & Diana Van Driesche  
 3286 Talbot Rd. S.  
 Jefferson, OR 97352  
 327-3609

# The Bee Line

## Oregon State Beekeepers Association

AFFILIATED WITH AMERICAN BEEKEEPING FEDERATION



Vol. 4 No. 6  
 June, 1980

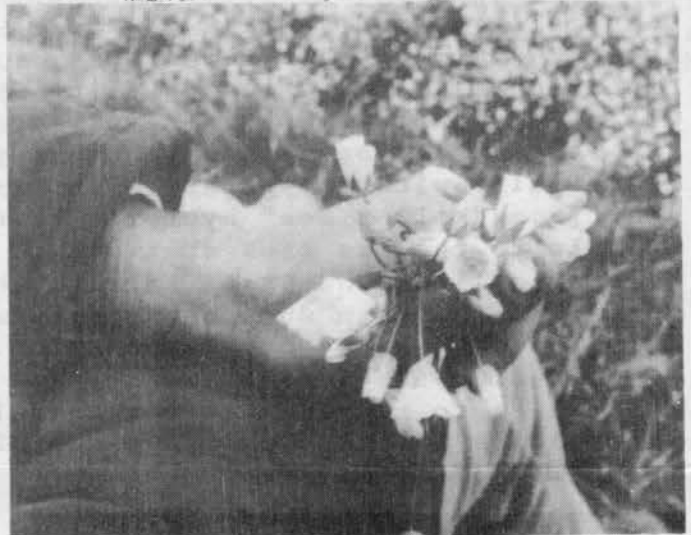
### Coming Event ... State Fair

### Planning Meeting

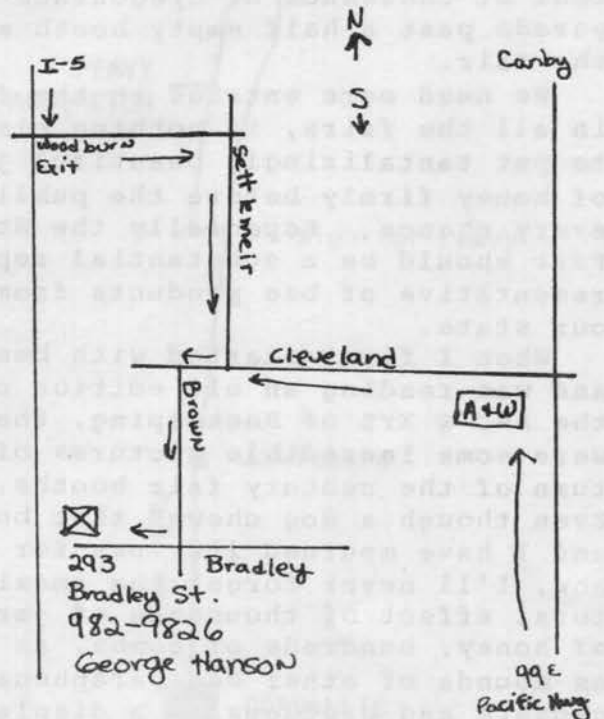
JULY 13, Sunday, will be the second meeting of the OSBA fair planning committee. It will be a pot luck at George Hanson's house in Woodburn. Directions to his house are below.

We would encourage all interested persons to attend. We have no formal committee, it consists of those persons who are able to attend. What we want are comments and ideas on how to make the upcoming State Fair honey booth attractive, educational and full of honey. We request all members to attend.

Please bring a pot luck dish, and your own table service. Refreshments will be provided. It should be a good day, come and join us.



Pollination Day Photos.  
 Dr. Westwood below left  
 and Meadowfoam above. More photos on page 5



# Fair Promotion

by George Hanson, Willamette Valley Beekeepers Assoc. President


Realistically, there is no promotion of honey done in this state, nor is there a consistent effort to inform people about bees. Any endeavors in these fields are made basically by individuals on their own. Not to detract from those individual's activities, suffice it to say, a lot more is necessary.

The attraction of bees and honey, especially with the negative interest from "killer bee" hysteria brings people to the bee presentations magnetically. The State Fair booth has been the main such bee presentation undertaken by our association. Considering the few dozen entries are meant to represent thousands of beekeepers and tens of thousands of colonies of bees, even the fair booth is a sorry promotion of our industry. Beekeepers are small in numbers compared to other interest groups, but we represent ourselves even fewer than we really are when tens of thousands of Oregonians parade past a half empty booth at the fair.

We need more entries in the fair, in all the fairs, if nothing else to put tantalizingly beautiful jars of honey firmly before the public at every chance. Especially the State Fair should be a substantial representative of bee products from our state.

When I first started with bees, and was reading an old edition of the ABC & XYZ of Beekeeping, there were some incredible pictures of turn of the century fair booths. Even though a dog chewed that book and I have mourned its loss for years now, I'll never forget the amazing total effect of thousands of jars of honey, hundreds of combs, as well as mounds of other bee paraphenalia, gadgets and products in a display not bigger than our fair booth.

I love the satisfaction of presenting award quality products for show. The time fiddling and manipulating to get those products just right has taught me a lot about bees and honey. But beyond that, beekeepers need to enter the fair in numbers to simply become visible. There is no better promotion of bees than presenting show quality honey and wax in the informative atmosphere of the Fair.



Buying and selling  
Honey Wholesale

GLORYBEE HONEY & SUPPLIES  
1001½ Terry St.  
Eugene, OR 97402  
(503) 485-1649



HONEY FOR SALE  
CUSTOM EXTRACTING

**Lamon Bee Acres**  
BEEHIVE RENTALS for POLLINATION  
BEE SWARMS COLLECTED

S. L. LAMON  
668-6772

31833 S.E. KELSO RD.  
BORING, OREGON 97009

KAY & DICK



**Port's Bees, Supplies  
& Bee Control Inc.**

Honey - Pollination  
Starter Hives & Equipment  
Exterminations

10808 S.E. OAK STREET  
MILWAUKIE, OREGON 97222  
PHONE 654-5936

# Meeting Notes

The Portland Beekeepers Association met June 29th at the home of Shirley and Gloria Lamon in Boring for a pot luck, swap meet and cake auction.

John and I arrived after the pot luck so did not get to sample all the good things there, but the dishes were empty so the food must have been delicious.

The day was beautiful and warm with a great view of Mt. Hood and people wandered all over Lamons property talking about beekeeping.

Mr. Lamon gave a tour of his extracting room. It was a nice cool place away from the heat. He ran some of the equipment and answered questions.

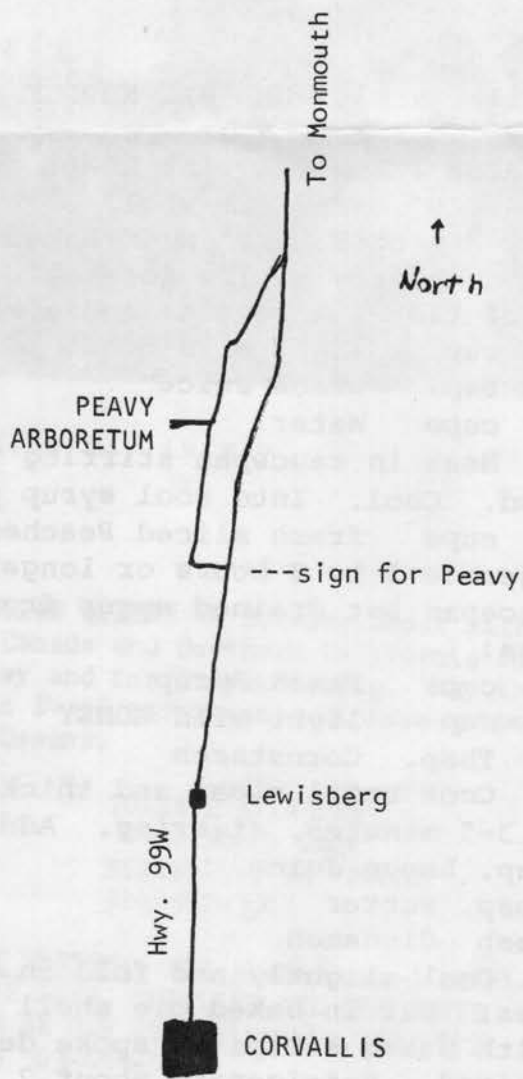
At four o'clock an auctioneer conducted the cake auction. She must have been good, I ended up with two cakes! There were cakes, bread, and honey candy. There was some lively bidding from the men on a chocolate cake and John got upset because I didn't get a lovely fluffy white cake.

Several of the cakes had a bee-keeping theme and one of mine was decorated with real flowers.

A swap meet followed at a nearby building. We were on our way home then so will have to wait for a report from the Lamon's on how much money was raised for the local treasury. We want to thank the Lamon's for their hospitality. It was a pleasant day.

# SUMMER picnic

The annual OSBA summer picnic will be held Saturday, August 2nd at the Peavy Arboretum, Oregon State University. Peavy Arboretum is part of the School of Forestry and is located six miles North of Corvallis just off Highway 99W. This lovely facility is complete with a lodge with full kitchen facilities in case some Oregon rain shows up. Serving will start at 1 pm. There will be more details in the next newsletter. A map is below.






BOX 991 • WALLA WALLA • WASHINGTON 99362

---

**"THE BEEKEEPERS DISCOUNT WAREHOUSE"**

For Orders Toll Free 1-800-541-8908

Washington Residents & other calls (509) 529-6284



**Dadant & Sons, Inc.**

HAMILTON, ILL. 62341

Phone 217-847-3324

Everything for the Beekeeper

**BRANCH**

P.O. Box 7996  
2534 Airways Drive  
Fresno, Calif. 93747  
Phone 209-292-4666

## RECIPES

Wilma Ruhl, RUHL BEE SUPPLY

### FRESH PEACH PIE with HONEY

9" Baked pie shell  
6 or 8 1/2" x 4" Baked  
pastry strips for top

Ahead of time fix peaches and syrup

1/2 cup light mild HONEY

1/4 tsp. Lemon Juice

1 1/4 cups Water

Heat in saucepan stirring till  
blended. Cool. Into cool syrup put:

3 cups fresh sliced Peaches

Refrigerate 1 to 2 hours or longer.

In saucepan put drained syrup from  
peaches:

1 3/4 cups Peach Syrup

1/3 cup light mild HONEY

3 Tbsp. Cornstarch

Cook until clear and thick,  
about 3-5 minutes, stirring. Add

3/4 tsp. Lemon Juice

1 Tbsp. Butter

dash Cinnamon

Cool slightly and fold in  
peaches. Put in baked pie shell and  
top with baked strips in spoke design  
if desired. Refrigerate about 2 hours

## LewBee White

WHOLESALE HONEY  
EXTRACTING

2124 N. Killingsworth Street  
Portland, 97217

Phone 289-2039



QUALITY HONEY

BEEKEEPING SUPPLIES

**SILVERBOW HONEY COMPANY INC.**

1220 THIRTEENTH STREET - SNOHOMISH, WASHINGTON 98290

Business  
(206) 568-2191

### SPECIAL PIE RECIPES

#### PEACHES and SOUR CREAM PIE

9" unbaked pie crust

Bake: 400° 15 minutes

350° 15-20 minutes

2 Tbsp. soft Butter or Margarine

1 quart Peaches, sliced, well  
drained

1 cup Sour Cream

2 large Eggs

1/4 cup mild flavor HONEY

1 tsp. Vanilla

dash Cinnamon

Spread butter over bottom of  
unbaked pie crust and chill thoroughly.

Arrange well drained peaches, over-  
lapping in bottom of chilled pastry.

Combine sour cream, eggs, HONEY and  
vanilla in blender or mixer. Care-  
fully pour over peaches. Sprinkle  
with cinnamon or other spice of your  
choice. Bake 400° for 15 minutes  
then reduce to 350° and bake 15 to  
20 minutes. Serve warm or cold.



Some photos of our Pollination Day in May.

## CLASSIFIEDS:

**CLASSIFIED:**

Sale on used extracting equipment and tanks:

Pump, Brand Melter, Mini uncapper, 35 to 300 gallon tanks, Labelette labeling machine, etc. 1968 one ton truck w/boom, 6 5/8 and 9 5/8 supers w/drawn comb, Bee Hive-double story w/pollination, Queen raising nuc boxes, Glorybee Honey & Supplies, 1001 1/2 Terry St. , Eugene, OR 97405 phone 503-485-1761

**ITALIAN QUEENS --** Breeder Stock Selected in Canada and Northern California for Honey and for Overwintering. May through June \$4.50 per Queen. Minimum shipments 25 Queens.

**TOLLETT APIARIES**  
4422 Honey Lane  
Millville, CA 96062  
916-547-3387

**HONEY WANTED:** All grades, send sample to:  
**PORT'S BEES, SUPPLIES AND BEE CONTROL INC.**  
10808 SE Oak St. Milwaukie, OR 97268  
phone 503-654-5936



**RUHL BEE SUPPLY**


**Beekeeping Supplies  
Bees Available**

Phone or Write  
for FREE Catalog

**256-4231**

Also Delicious Raw Honey  
Variety of Kinds & Sizes  
1424 NE 80th - Portland 97213

Available  
**HANDBOOK ON  
SWARM PREVENTION**  
18 Pages of  
Text and Illustrations  
\$4.00 Postpaid



**H.E. WERNER**  
5 Hilton Road  
Wilmington, DE 19810

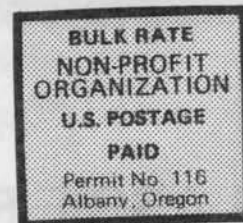
Do you have beekeeping equipment or supplies that you wish to sell, swap, or give away? If you do, send an ad to The Bee Line, Rt. 1, Box

162, Jefferson, OR 97352. The price is \$1 for members; \$1.50 for nonmembers. Please be concise.

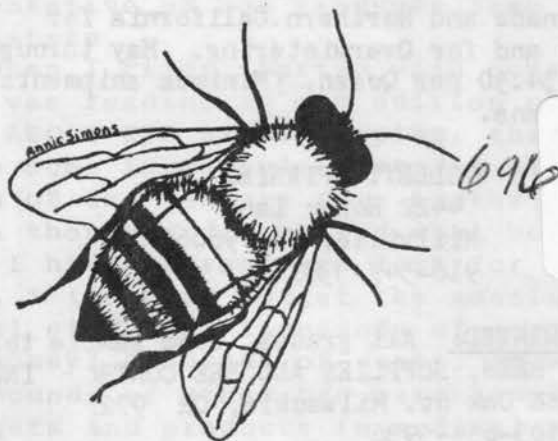
**OREGON STATE BEEKEEPERS ASSN.**

Secretary Treasurer  
**JOHN & DIANA VAN DRIESCHE**  
3286 Talbot Rd. S.  
Jefferson, OR 97352  
327-3609

Address Correction Requested



7-31



Ellis Jones  
701 Goodpasture Island RD  
Eugene OR 97401

