

President  
Gene Garner  
1375 S. 2nd St.  
Springfield, OR 97477  
746-5972

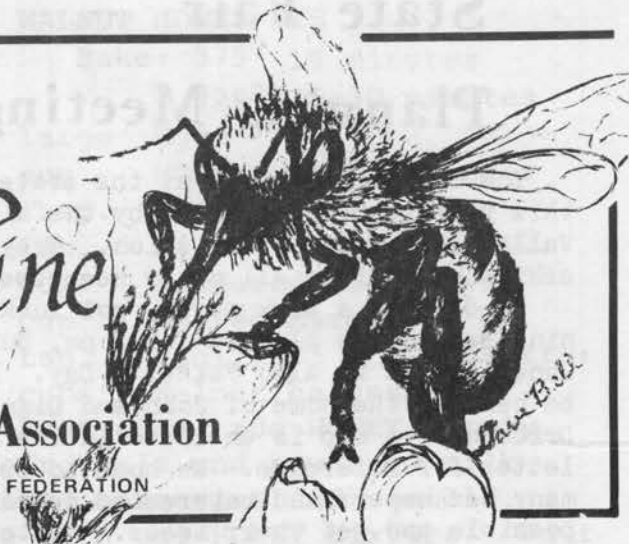
Secretary-Treasurer  
John & Diana Van Driesche  
Rt. 1 Box 162  
Jefferson, OR 97352  
327-3609

Vol. 4 No. 5  
May, 1980

# The Bee Line

## Oregon State Beekeepers Association

AFFILIATED WITH AMERICAN BEEKEEPING FEDERATION



Stealing is more fun!



Times are so tough in Salem that Fred Van Natta's bees have taken to eating grass!

## Coming Event ... Pot Luck, Swap Meet

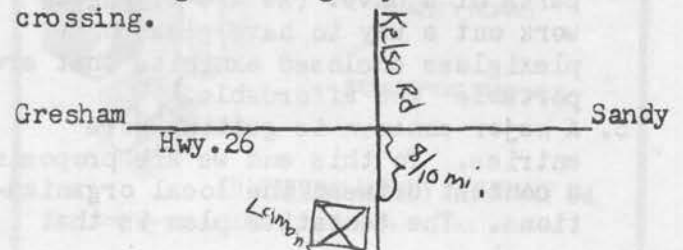
The Portland Beekeepers Association is having a Swap Meet, Pot Luck and Cake Auction on the 29th. of June from 10am to dark. This will be held at the home of Gloria Lamon, 31833 SE Kelso Rd., Boring, Oregon, phone 668-6772.

They would like to invite all beekeepers to attend. For the Swap Meet bring what you have to swap or sell. The Pot Luck will start at 1 pm. Bring your own silverware and plates. Bring a hot or cold dish. Tea, coffee and punch will be furnished, as well as cups.

The cake auction will start at 4 pm. All proceeds will go to the Portland Beekeepers Association.

Lamon's extracting room will be open for viewing as well as the bee equipment building. Gloria Lamon adds, "Come one, come all, we have 20 acres to roam in."

A map is reproduced below and there will also be signs on Highway 26 and Kelso Rd. crossing.



# State Fair

## Planning Meeting

The beekeeping booth at the state fair this year is being planned by the Willamette Valley Beekeepers Association. They are asking input from all other beekeepers.

To do this a work party, pot luck, planning session is planned for 2 pm, Sunday, June 15. It is also Father's Day. It will be held at the home of John and Diana Van Driesche. A map is enclosed in this newsletter for reference. We hope to see as many beekeepers and interested persons as possible and get their ideas. Listed below are some tentative plans and suggestions that came from the first planning meeting May 21.

1. Persons are needed for the following:
  - A. setting up honey as it is entered.
  - B. organizing the booth and gathering materials.
  - C. making a list of persons to attend the booth during fair time.
  - D. someone to assemble the rotating trophy, get new trophies, and handle the engraving of the names of the 1980 winners.
2. We plan to put promotional posters, entry blanks and judging rules at all bee supply houses in the area and to the local associations. Someone has to produce and letter the posters and distribute them.
3. We want to have promotional literature at the booth to hand out.
4. A Beeline is to be designed to be given out at the fair in large numbers. We will solicit comments on the type of material that should be printed in it.
5. We want to discuss having locals make small displays for the fair booth, around the perimeter on topics such as, bee products, honey plants, honey from flower to table, insecticides, disease and predators, constructing parts of a hive. (We are trying to work out a way to have glass or plexiglass enclosed exhibits that are portable and affordable.)
6. A major concern is getting more entries. To this end we are proposing a contest between the local organizations. The tentative plan is that

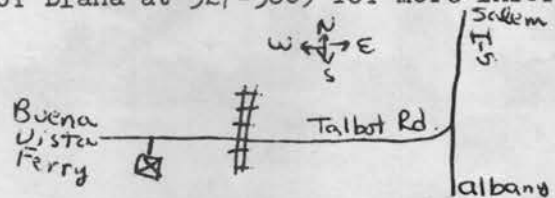
the local with the largest percentage of paid members entering one or more categories, those people who enter from that local would receive a free dinner at the OSBA fall meeting.

7. We are looking for a source of honey jars for entries and then will suggest that all local organizations purchase in bulk enough jars for their members who wish to enter.

If you cannot attend but wish to contribute ideas please mail them to the newsletter address before June 15 and they will be read and discussed at the meeting.

If we want the fair to be successful let's put forth the effort. If a lot of people contribute it will spread the work around and give us all satisfaction and not "burn out" a few.

We would like to see you all there. For the pot luck, bring your own table service, and a hot or cold dish. Coffee, tea and punch will be served. You can call John or Diana at 327-3609 for more information.



We are 10 miles south of Salem on I-5, and 2 1/2 miles west on Talbot Rd. from I-5. You cross a railroad track in Talbot and we are the fourth house on the left after the first intersection.

## Notes:

### EDITOR'S NOTE:

Due to an oversight last month, Herman Scullen's name was not listed as a life member of OSBA. We certainly want to continue to acknowledge his contribution to Oregon beekeeping.

We have received a sales letter from Pooser Lumber Company, P.O. Box 214235, Sacramento, CA 95821. They want to advertise their capabilities to make beehive lumber from Sitka Spruce and claim that it has many desirable qualities for beehives. You can write to their address above for price quotations and more information.

Wilma Ruhl, RUHL BEE SUPPLY

## BANANA WHOLE WHEAT BREAD

Bake: 325° 70 minutes  
5" x 9" loaf pan

- 1/3 cup HONEY
- 1/2 cup Oil
- 3 ripe Bananas, medium size
- 1 tsp. Vanilla
- 1/2 tsp. Lemon Juice
- 2 large Eggs, well beaten
- 1/4 cup Zoom, whole wheat cereal, uncooked or Wheat Germ
- 1 tsp. Baking Powder
- 1 tsp. Soda
- 1/2 tsp. Salt
- 1/2 tsp. Cinnamon
- 1/2 cup chopped Walnuts
- 1 1/2 cups Whole Wheat Flour

Beat HONEY and oil. Mash ripe bananas. Add vanilla and beaten eggs. Add to HONEY mixture. Combine dry ingredients. Add to HONEY-banana mixture. Stir in chopped nuts. Bake in loaf pan, greased or lined with waxed paper for approx. 70 minutes at 325° in 5" x 9" glass pan.

## CRUNCHY PEANUT BUTTER COOKIES

with HONEY

Bake: 350° 8-10 minutes  
ungreased cookie sheet

Makes 6 dozen 2 1/2" cookie

- 1 cup Butter or Margarine
- 1 cup Crunchy-Peanut Butter (old fashioned type)
- 1 cup HONEY, light mild
- 2 large Eggs
- 1 tsp. Vanilla
- 2 1/2 cups Flour
- 1 1/2 tsp. Soda

Cream butter and peanut butter. Add HONEY, eggs and vanilla. Continue beating until smooth. Sift flour and soda and combine with creamed mixture. Stir well. Bake on ungreased cookie sheet at 350° for 8 to 10 minutes. Dough is soft and sticky. Use tablespoon of dough and flatten lightly with floured fork. Makes 6 dozen 2 1/2 inch cookies.

## WALNUT HONEY PIE

Bake: 375° 15 minutes  
325° 25-30 minutes

- 3 large Eggs
- 1 cup HONEY, dark stronger
- 2 1/2 Tbsp. Flour
- 1/4 tsp. Salt
- 1/4 cup Powdered Milk
- 1/4 cup melted Margarine or Butter
- 1 1/2 tsp. Vanilla
- 1 1/2 cups Walnut halves

Beat eggs, add HONEY slowly. Mix flour, salt and powdered milk. Add melted margarine and vanilla. Combine with egg-HONEY mixture. Pour into unbaked 9" pie crust. Arrange walnut halves over top. Bake 375° for 15 minutes, then reduce to 325° and bake 25-30 minutes or until set and puffy. Serve with dabs of HONEY sweetened whipped cream.

## WHIPPED CREAM with HONEY

- 1 cup chilled Whipping Cream
- 2 Tbsp. HONEY, mild-light
- 1 tsp. Vanilla

Chill beaters and cream. Whip to soft peaks then slowly add HONEY and vanilla, carefully. Keep chilled




BOX 991 - WALLA WALLA - WASHINGTON 99362

**"THE BEEKEEPERS DISCOUNT WAREHOUSE"**

For Orders Toll Free 1-800-541-8908  
Washington Residents & other calls 509/529-6284



QUALITY HONEY

BEEKEEPING SUPPLIES

SILVERBOW HONEY COMPANY INC.

1220 THIRTEENTH STREET SNOHOMISH WASHINGTON 98290

Business  
42061568-2191

## FIELD TRIP NOTES

About 28 beekeepers braved the elements Saturday, May 24, for the pollination field day at Corvallis. Although we took refuge in an equipment shed during one shower the outing was informative, social, and colorful. Photos of the trip will appear in the next newsletter.

The group met at the Hyslop Field Lab just north of Corvallis at 10 am for the first tour. Mr. Jim Crane of the field lab gave us a tour of the facility. We all clambered onto a tractor trailer and were driven to a beautiful red poppy field just at the end of bloom. Because of the cool weather there were no bees working the poppies for their abundant purple pollen.

(In order to give you more accurate information about the crops we visited, the quoted paragraphs that follow have been taken from the handout we received at Hyslop.)

"Red poppy, *Papaver Bracteatum*, is a perennial plant that produces the alkaloid thebaine. The alkaloid can be converted into the licit drug codeine but it is extremely difficult and costly to produce such narcotics as morphine, heroin or opium. This new crop could be a domestic source of codeine with the potential of reducing the drug abuse of hard narcotics in the world."

Across from the poppies was a field of rapeseed with seeds already set. The seed set was excellent and the bees had worked it vigorously when in bloom. It looked similar to mustard.

"Rapeseed, *Brassica napus*, a breeding program on rapeseed to develop new cultivars high in erucic acid as an industrial oil for the steel, rubber and plastic industries. We expect to release a new cultivar within 2 years. This crop is well adapted to production in western Oregon with a yield potential of over 3000 pounds per acre."

Another member of the Hyslop Lab spoke about current research on sunflowers and we went back aboard the trailer to the meadowfoam testing site. The meadowfoam patch showed solid white from a good distance and when we got to the field it was a solid mass of bloom.

"Meadowfoam, *Limnanthes alba* var. *alba*, is a winter annual that produces seed which contains an oil with unique biochemical characteristics. The oil from meadowfoam could be a renewable source of raw materials for the domestic production of a hard wax, wax esters (sperm whale oil substitute,) epoxidized oil, and three long carbon chain fatty acids needed for various critical industrial purposes."

"The objective of this research program is to find new and alternate crops that are adapted for production in Oregon with a market potential that will provide an economic return to growers."

We finished the tour at noon and most of us assembled at Sambo's for a light lunch and to get warm.

At 1:30 we reassembled at the Lewis-Brown farm just east of Corvallis and Dr. Westwood showed us the treefruits and berries research. We looked at hedgerow plantings of pears and apples, pruning and thinning methods and the drip irrigation system they used. Dr. Westwood also discussed the different grafting rootstocks that are being experimented with.

We walked through the strawberry plots (too green) and into the blueberries and raspberries. Dr. Michael Burgett had two hives that the skunks had discovered next to the blueberries and the scratchings around the hive were closely examined. Orvel Bassett caught a bee by its wings and a group gathered to comment on its characteristics.

The tour finished with a walk through an orchard with the largest number of pear tree species in the world; a project of Dr. Westwood's. There were tall trees, short trees, big leaves and big blooms, tiny pears, large round pears, fuzzy leaves, gray-green willow shaped leaves and still all pears. Many in the group wanted to come back and see the entire farm again during harvest, for more than one reason.

We would like to thank Dr. Burgett for organizing the tour and our lecturers for speaking to us.

## NEW AMERICAN BEE JOURNAL RATES EFFECTIVE JULY 1, 1980

We are increasing the subscription rates for the American Bee Journal, effective July 1, 1980. Association discounts of 25 per cent will remain in effect. These subscriptions must be ordered through the association secretary. This will help us keep our records straight, so that these subscribers will not be billed at our regular price.

<u>Regular Rates</u>	<u>Association Rates</u>
1 year.....U.S. \$9.00	1 year..... U.S. \$6.75
2 years.....U.S. 17.25	2 years..... U.S. 12.93

Canadian and other foreign subscriptions U.S. \$3.00 additional per year.

We hope all associations will keep in mind that we do have free literature and membership cards available upon request for your meetings. In addition, we continue to receive good reports on our free slide set series. This group of eight slide sets should be ordered one set at a time to avoid shortages to others who need them for meetings. Please schedule your set well ahead of your meeting date and give us an alternative choice just in case we are out of the set you want.

### BEEKEEPING SLIDE SETS WITH SCRIPT

(You pay return postages, either UPS or INSURED parcel post)  
(Must be returned immediately after use)

#### EXCELLENT FOR BEE MEETINGS, EDUCATORS AND EXTENSION WORKERS

1. Package Bees (51 slides) - Hiving and caring for a package bee colony up to supering time.
2. Supering Package Bees (44 slides) - How to super, remove and care for bulk comb honey.
3. Spring Management (52 slides) - Care of the overwintered colony until the honeyflow.
4. Supering Overwintered Colonies (37 slides) - Production of bulk comb and extracted honey. Also, honey removal with the bee escape.
5. Diseases and Enemies (21 slides) - How to recognize chalk brood, American and European foulbrood, wax moth worms; some on use of drugs.
6. Queens and Requeening (44 slides) - Care, clipping, marking of queens; recognizing poor queens or drone layers; requeening, reversing, uniting colonies.
7. Honey Plants (55 slides) - Major and minor plants from warmth of spring until fall freeze.
8. Starline/Midnite Breeding Program (51 slides) - This series deals with the development of these 2 hybrids.

Please indicate set and date desired.

Advance scheduling appreciated.

# CLASSIFIEDS:

**FOR SALE:** Shallow supers, nine frames excellent drawn comb. \$8.00 each. Quantity discount. Call Michael Meyer 327-3501.

**SELL OR TRADE:** 10 frame western (1/2) supers. Call mornings before 7 am or evenings after 6 pm or write John Campbell, 7843 Gold Ray Rd., Central Point, OR 97502, or phone 1-503-664-4867.


**ITALIAN QUEENS --** Breeder Stock Selected in Canada and Northern California for Honey and for Overwintering. May through June \$4.50 per Queen. Minimum shipments 25 Queens.

**TOLLETT APIARIES**  
4422 Honey Lane  
Millville, CA 96062  
916-547-3387

**HONEY WANTED:** All grades, send sample to: **PORT'S BEES, SUPPLIES AND BEE CONTROL, INC.** 10808 SE Oak St. Milwaukie, OR 97222 phone 503-654-5936

# ADDRESS CHANGE ?

If you change your address, PLEASE notify the newsletter. Each Beeline that is returned costs the OSBA money that could be put to a better use. Each returned newsletter also delays your receiving it on time.



Buying and selling  
Honey Wholesale

**GLORYBEE HONEY & SUPPLIES**  
1001½ Terry St.  
Eugene, OR 97402  
(503) 485-1649



HONEY FOR SALE  
CUSTOM EXTRACTING

**Lamon Bee Acres**  
BEEHIVE RENTALS for POLLINATION  
BEE SWARMS COLLECTED

S. L. LAMON  
668-6772

31833 S.E. KELSO RD.  
BORING, OREGON 97009

# MEMBERSHIP DUES:

PLEASE CLIP FORM AND MAIL WITH YOUR CHECK TO:

**Secretary Treasurer**  
**JOHN & DIANA VAN DRIESCHE**  
Rt. 1 Box 162  
Jefferson, Oregon 97352  
327-3609

American Beekeeping Federation Dues:  
0 - 199 \$10



**OREGON STATE BEEKEEPERS ASSOCIATION**

Date \_\_\_\_\_ Dues for year \_\_\_\_\_

Name \_\_\_\_\_

Address \_\_\_\_\_

City \_\_\_\_\_ State \_\_\_\_\_ Zip \_\_\_\_\_

State Dues Paid \$ \_\_\_\_\_

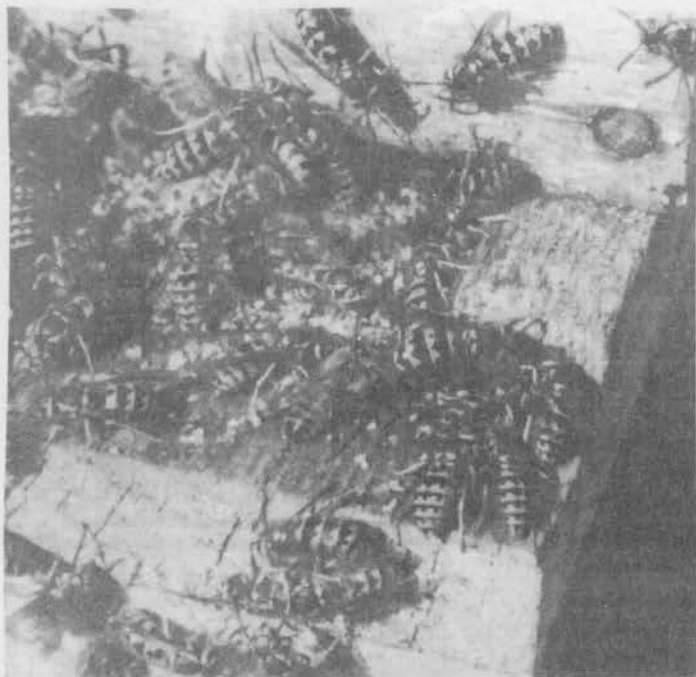
Local Dues Paid \$ \_\_\_\_\_

Number of colonies \_\_\_\_\_

Branch Secretary \_\_\_\_\_

State Secretary \_\_\_\_\_

State Dues: 0-5 colonies \$5. 6-24 \$10. 25-99 \$15. 100-299 \$20. 300-400 \$25. 500 or more \$30.



These are some of Fred Van Natta's bees in the summer of 1979 in Salem. The extracted supers were put back on the hives to be cleaned. No cracks should be left between supers.

## LOCAL NEWS

Wilma Gore, Secretary-Treasurer of the Umpqua Valley Beekeepers Association, writes that their group is working to obtain new members and have better attendance at monthly meetings. In November they had a honey tasting contest at their meeting. Each member brought a sample of his honey and after much tasting, votes were taken for the best flavor, next best, etc.

KAY & DICK

**Port's Bees, Supplies  
& Bee Control Inc.**



*Honey - Pollination  
Starter Hives & Equipment  
Exterminations*

10808 S.E. OAK STREET  
MILWAUKIE, OREGON 97222  
PHONE 654-5936

## MAGAZINE RATES UP

Magazine subscription rates to "Cleanings in Bee Culture" are going to be increased as of May 1, 1980. They will be \$6.60 per year, two years \$17.25. These rates reflect a membership savings only on a one year subscription.



**Dadant & Sons, Inc.**

HAMILTON, ILL. 62341

Phone 217-847-3324

Everything for the Beekeeper

**BRANCH**

P.O. Box 7996  
2534 Airways Drive  
Fresno, Calif. 93747  
Phone 209-292-4666



Fred Van Natta's bees in Salem worked the grass in mid summer. He was not sure exactly what they were picking up from the grass.



**RUHL BEE SUPPLY**

**Beekeeping Supplies  
Bees Available**

Phone or Write  
for FREE Catalog

**256-4231**

Also Delicious Raw Honey  
Variety of Kinds & Sizes  
1424 NE 80th - Portland 97213

**Available  
HANDBOOK ON  
SWARM PREVENTION**

18 Pages of  
Text and Illustrations  
**\$4.00 Postpaid**



**H.E. WERNER**  
5 Hilton Road  
Wilmington, DE 19810

Do you have beekeeping equipment or supplies that you wish to sell, swap, or give away? If you do, send an ad to The Bee Line, Rt. 1, Box

162, Jefferson, OR 97352. The price is \$1 for members; \$1.50 for nonmembers. Please be concise.

**OREGON STATE BEEKEEPERS ASSN.**

**Secretary Treasurer**  
**JOHN & DIANA VAN DRIESCHE**  
Rt. 1 Box 162  
Jefferson, Oregon 97352  
327-3609

**Address Correction Requested**

**BULK RATE  
NON-PROFIT  
ORGANIZATION  
U.S. POSTAGE  
PAID**  
Permit No. 116  
Albany, Oregon

