

PRESIDENT

Gene Garner
1375 S. 2nd St.
Springfield, OR
746-5972

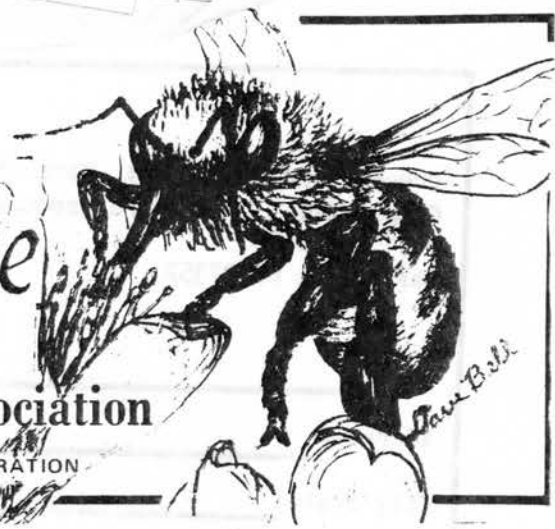
Secretary Treasurer
JOHN & DIANA VAN DRIESCHE
P.O. Box 162
Jefferson, Oregon 97352
327-3609

Vol. 4 No. 1
January 1980

The Bee Line

Oregon State Beekeepers Association

AFFILIATED WITH AMERICAN BEEKEEPING FEDERATION



PRESIDENT'S MESSAGE

by Gene Garner, 1980 OSBA President

We wish to thank all who worked so hard in 1979 on committees and a really big thank you to Jack Rowland and the officers who extended so much of their time and efforts into Oregon State Beekeepers Association.

Beginning 1980 is a challenge to anyone in the beekeeping industry. Beekeeping is a highly specialized division of farming. With gas shortages all around us and starving people around the world, we must all be aware that we have to be able to produce more honey at a lower price to be competitive. We must remain open minded to the point of being more aware of honey and pollination needs. Hobbyists as well as the commercial are affected. Effective hive management is the key to high honey production.

Our dues structure helps to pay for speakers who are knowledgeable in certain facets of beekeeping. Please be prompt with your dues for the coming year.

1980 CALENDAR

- March 15 - Spring Meeting, Eugene
- May 24 - Pollination Day, Corvallis
- August 2 - Picnic, Corvallis
- November 14, 15 - Fall Meeting, Corvallis

BOARD MEETING REPORT

The Oregon State Beekeepers Association Board of Directors held a meeting, January 11 in Corvallis. Attending were Gene Garner, Sally Garner, Cyril Crabtree, John and Diana Van Driesche, Mike Burgett, Bill Ruhl and Morris Smith.

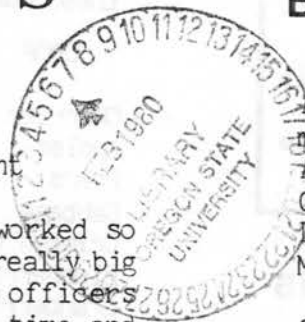
Plans for the coming year were formulated. A one day Spring meeting March 15 in Eugene was scheduled. Speaker topics are, Economics of Beekeeping, beekeeping with a one story brood nest, hand-dipped beeswax candles, the Orchard Mason Bee, a business meeting, and an evening speaker on beekeeping in China.

A Pollination Day has been planned in Corvallis for May 24 with a tour of two OSU research farms. It will be one day with a bring your own brown bag lunch.

The picnic was set for August 2nd at Peavy Arboretum in Corvallis. Tentative Plans are for a Best Beekeeping Picture Contest.

The Fall meeting is planned for two days, November 14 and 15, at Oregon State University. The program is still being formulated. An auction is planned for the Fall meeting to raise money to purchase a glass display case for honey displays.

The OSBA Spring meeting will have a preregistration fee of \$12 for a couple and \$8 for a single person. This will include a dinner at 1:30 pm for only those who preregister. The fee at the door will only cover registration fees. Fill out the enclosed form and send it to the secretary as soon as possible.



Committee Report

Report of Pollination Committee by Michael Meyer

Here are the results of the pollination price survey. I have put the approximate number of colonies represented by each category. The beekeeper total was 17 and the pollinating colony total was 8500. These prices may be revised upward as gas prices increase. In closing, if we as beekeepers were to get a fair return for our services, I and many other think that a \$20 base fee would not be unreasonable in these current times.

CROP	COLONIES	Avg. PRICE	RANGE
Cherries	8000	\$15	\$14-18
Apples	6000	\$16	\$15-20
Pears	6000	\$15	\$14-20
Cabbage	800	\$18	\$17-20
Crimson Clover	1000	\$ 2	\$ 0- 3
Blueberries	1000	\$17	\$14-20
Cranberries	1000	\$23	\$22-25
Rasp/Boysen-Berries	3000	\$12	\$10-20
Blackberries	1500	\$13	\$10-20
White Clover	4000	\$15	\$12-20
Cukes, Squash	2000	\$23	\$18-35
Carrots, Onions	500	\$25	\$25
Red Clover	3000	\$18	\$14-30
Sunflowers	350	\$12	\$12

In closing, let me say that these prices were estimates only and did not represent actual contracts. Perhaps this information will be helpful to beekeepers entering new crops and to those small beekeepers who pollinate a few crops. Beekeepers: you hurt no one but yourself when you undercut someone just to get a job. Our prices compared to Washington prices are dismally low—only 50 to 60% of what they get.

ADDRESS CHANGE ?

If you change your address, PLEASE notify the Beeline. Each newsletter that is returned costs the OSBA money that could be put to a better use. Each returned Beeline also delays your receiving it on time.

Pre-Registration Form: March Meeting
Oregon State Beekeepers Association
Rt 1 Box 162
Jefferson, OR 97352

Name: _____

Address: _____

City/State: _____

Yes, I would like attend the dinner and conference.

Enclosed is a check for: _____ \$ 8 single
_____ \$ 12 couple

News From The Locals

from Tillamook Beekeepers Assn.
by Paul F. Miller in December

You may be interested in the survey made by Bruce Merritt, one of our members, of the honey production recorded this past season by the 10 members of our group, the Tillamook Beekeeper's Assn.

The results are as follows:

Number of hives	124
Comb Honey	1521 lbs.
Extracted Honey	<u>3629</u> lbs.
Total	5150 lbs.
Avg. per hive	41.5 lbs.

Admittedly this production does not set any records, but for an area that is not noted as a bee paradise, we think the results are quite impressive for a bunch of amateurs.

The main honey flow in this area is from the blackberries and we think that this light honey is quite delicious. We are careful to get our crop removed before the Tansy Ragwort blooms in August. Although honey from the latter source reputedly is desired by some, we prefer to leave it for the bees' winter stores.

South Coast Ramblings

By: Dick Lemery

Winter is the time you hope your hives make it through to spring. Ten percent winter loss is a standard figure, one which I find very hard to take. This figure can be reduced to practically nil with a little bit of luck, and some care. On the coast, dampness is the chief enemy of overwintering bee colonies. I like to keep my entrances open, and put sticks under the covers to allow for air circulation.

Dry food also reduces dampness in the hive. If you think any of your colonies needs feedings, especially in March, you can feed either dry sugar or hard bee candy made with the following recipe:

- 12 lbs. sugar
 - 1 pint corn syrup
 - 2 1/2 pints water
- boil these to 230 F

add 1/2 tsp. cream of tartar and boil until 238 F
 Pour into pie tins or molds

This dry food can be placed in tin pie pans on the top bars in an empty super. The candy or sugar also will not stimulate the bees to fly out in cold weather in search of nectar as sugar syrup might.

Early pollen does not seem to be a big problem on the coast, but the weather to fly out and get it is a problem. Pussy willows will bloom in February, and myrtle blooms in January and even in December. Try to locate your hives so the entrances will be in the sun on nice winter days. Then the bees can get out for cleansing flights and gather some early pollen. Avoid shady spots, and spots where you have suffered severe winter losses before! Location is a big factor. Air drainage will also reduce dampness in your bee colonies. Spots halfway up a hill on a southern slope will allow for sun and good air drainage. Do not put your bees down in a hollow with no way for damp, cold air to be blown away. Have you even noticed how it will sometimes frost in these damp places while the surrounding hillocks are frost-free?

Combs of pollen will usually mildew if now covered by the cluster of bees. Try to keep these valuable combs where you think the cluster will cover them. In extreme cases, I have seen the bees entirely tear down a mildewed comb of pollen. What a waste! Ordinary empty combs will also mildew, but the bees seem to clean this up easily. The bee inspector told me that mildew causes dysentery in the bees.

If your hives are top tall and in a windy spot, they will blow over in a winter gale. Try to keep them only two or three boxes high, and not exposed to direct gale winds. Get some heavy rocks or scrap iron and weight the lids down so they won't blow off. I remember years ago my father lost two colonies of bees when a storm blew the lids off. Moles may undermine your hive stands and make it teeter. Make sure your hive is steady in the wind!

I do not think a coastal beekeeper should worry about giving his hives too much ventilation. Remember, the bees cannot heat the whole hive anyway. They only heat the actual cluster of bees. It gets colder, the cluster contracts. If it becomes warmer the cluster expands. The side walls and corners of the hive are not heated in winter, so you won't be doing wrong to ventilate out the arch-enemy-moisture.

SPRING INVENTORY SALE!!!!

28oz. jars w/lids at \$23.99/gross
 (1/2 the cost of a 2 lb jar)

Goatskin Gloves \$9.99/pr. Cowhide \$8.99/pr
 Ventilated Helmets \$3.99 ea.
 Round Veils \$3.59 ea.

Prices good while supplies last.
 Heins Honey Co. Inc. All Prices F.O.B.
 2100 S. Jackson Albany, OR We
 P.O. Box 517 ship UPS and
 Albany, OR 97321 Common Carrier
 5 days a week.

write or Call 503-926-2383

Heins Honey Co.
ALBANY, OR.

New 1980 Officers Local Elections

Lane County Beekeepers

President--Cyril Crabtree
Vice-President--Ray Simons
Secretary--Robert Haries
Treasurer--Russel Sweeney

Tillamook Beekeepers

President--Kenneth Ray
Vice-President--Albert Griffin
Sec. Tres--Paul Miller

Cook County Beekeepers

President--M.K. Chandler
Vice-President--Dick Lemery
Vice-President--Charlotte Maine
Sec. Tres--Jack Piper


The Cook County Chapter is going to start a membership drive to enlarge their group.

Willamette Valley Beekeepers


President--George Hansen
Vice-President--Jack Rowland
Sec. Tres.--Martna Schrader

Willamette Valley Beekeeping Association will have a bee school starting February 18 and will run 9 weeks. For more information call or write Stan White, 1164 63rd AV NE, Salem, OR 97301/or call 263-5456. The cost will be 12 dollars.

Available
**HANDBOOK ON
SWARM PREVENTION**
18 Pages of
Text and Illustrations
\$4.00 Postpaid



H.E. WERNER
5 Hilton Road
Wilmington, DE 19810



Dadant & Sons, Inc.
HAMILTON, ILL. 62341
Phone 217-847-3324

Everything for the Beekeeper


BRANCH
P.O. Box 7996
2534 Airways Drive
Fresno, Calif. 93727
Phone 209-29214666



Buying and selling
Honey Wholesale

GLORYBEE HONEY & SUPPLIES
1001½ Terry St.
Eugene, OR 97402
(503) 485-1649

KAY & DICK



**Port's Bees
and Supplies**

Honey - Pollination
Starter Hives & Equip.

10808 SE Oak
Milwaukie, OR
654-5936 97222

Meyer 'Stingless'
BEE GLOVE

"These are the best bee gloves I have ever seen."
Dr. Richard Taylor

Cool and Flexible
Highest quality Goatskin and Ripstop Nylon
\$13.00 postpaid Sizes S M L XL
Special Dealer prices
GOLDEN AMBROSIA HONEY CO.
Rt. 1 Box 175 Monmouth OR
97361 745-5206



CLASSIFIEDS:

3-FRAME NUCS available April 10 on--\$28 frame exchange \$32 no exchange. NucS started in California--the BEST you can buy in Oregon! Start ahead this spring--order now--supply limited. Dark, Carniolan queens. Michael Meyer RT. 1, Box 175, Wrmouth OR 97361 745-5206.

For Sale---100--Two story, Ten Frame, Wintered over colonies. New Covers, Bottoms and Supers. \$60.00 each. Call (509) 924-8316. Ancel Goolsbey, E. 9207 Broadway, Spokane, Washington 99206. These bees are located in Oregon.---Spring Delivery.

 FOR SALE: Eighty hives for sale or lease: 10 frame, 2 story colonies. Kenneth Leighton, Sr. 509-935-8879, Rt. 1 Box 81 Addy, Wa., 99101.

Retired Hobbyist Selling out. 63 colonies bees. Nice drawn honey supers. Extra hive parts, 4-frame non-reversible extractor with motor, 300# honey tanks, capping melter, sugar trays and other misc. items connected with bee business. Pollination clients around Portland area. 16059 SE Lark AV, Milwaukie, OR 97222/phone 655-4620.

 FOR SALE: 1 X 12 pine lumber in 2 foot lengths in 1000 board foot units for bee hives. \$150. each. Also in other widths and grades. Phone in Salem 393-8048.

NEW MAGAZINE RATES

Effective September 1 there are new rates for the American Bee Journal. Association rates will be for one year \$6.38 and for two years, \$12.38. These rates reflect an association discount of 25% for paid members. Please send your renewals to the Secretary - Treasurer.

MEMBERSHIP DUES:

MEMBERSHIP APPLICATION INCLUDES SUBSCRIPTION TO THE BEELINE (FOR OSBA MEMBERS ONLY) PLEASE CLIP FORM AND MAIL WITH YOUR CHECK TO:

Secretary Treasurer
JOHN & DIANA VAN DRIESCHE
 Rt. 1 Box 162
 Jefferson, Oregon 97352
 327-3609

American Beekeeping Federation Dues:

0 - 199 \$10
 200 or more 5cents
 per colony

Oregon State

Regular Membership

Dues: 0 - 5 colonies, \$5
 6 - 24, \$10
 25 - 99, \$15
 100 - 299, \$20
 300-499, \$25
 500 or more \$30

Affiliate membership:

Commercial \$25
 Individual \$5
 Youth \$3

<u>Name</u> _____				Oregon State
<u>Address</u> _____				Beekeepers
Street _____				Association
<u>City</u> _____	<u>State</u> _____	<u>County</u> _____	<u>Zip</u> _____	<u>Dues For Year</u> _____
<u>Telephone</u> _____	<u>Number of colonies</u> _____	<u>Occupation</u> _____		
<u>Amount I Have Paid</u> _____		<u>Date I Paid On</u> _____		
The Local Beekeeping Chapter I belong to _____				
I do not Belong to a Local, but would like information on the nearest one in my area: _____				
I am a member of the American Beekeeping Federation _____				
I am a member of the Western Apiculture Society _____				
<u>Card sent</u> _____	<u>Information Sent</u> _____	<u>Sec Initials</u> _____		



HONEY FOR SALE
CUSTOM EXTRACTING

Lamon Bee Acres
BEEHIVE RENTALS for POLLINATION
BEE SWARMS COLLECTED

S. L. LAMON
668-6772

31833 S.E. KELSO RD.
BORING, OREGON 97009

LewBee White

WHOLESALE HONEY
EXTRACTING

2124 N. Killingsworth Street
Portland, 97217
Phone 289-2039



QUALITY HONEY
BEEKEEPING SUPPLIES

SILVERBOW HONEY COMPANY INC.
1220 THIRTEENTH STREET - SNOHOMISH, WASHINGTON 98290

Business
(206) 568-2191



Strauser
BEE SUPPLY
BOX 91 - WALLA WALLA - WASHINGTON 99362

"THE BEEKEEPERS DISCOUNT WAREHOUSE"
For Orders Toll Free 1-800-541-8908
Washington Residents & other calls (509) 529-6284

Do you have beekeeping equipment or supplies that you wish to sell, swap, or give away? If you do, send an ad to The Bee Line, Rt. 1, Box

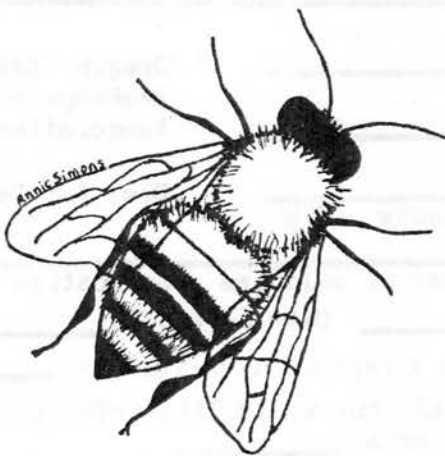
162, Jefferson, OR 97352. The price is \$1 for members; \$1.50 for nonmembers. Please be concise.

OREGON STATE BEEKEEPERS ASSN.

Secretary Treasurer
JOHN & DIANA VAN DRIESCHE
Rt. 1 Box 162
Jefferson, Oregon 97352
327-3609

Address Correction Requested

BULK RATE
NON-PROFIT
ORGANIZATION
U.S. POSTAGE
PAID
Permit No. 116
Albany, Oregon



Serial Department
Kerr Library
Oregon State U
Corvallis OR 97331