



# The Bee Line

Newsletter of the Oregon State Beekeepers Association

Volume 40

Number 9

October 2015



Mary Edwards

## IN THIS ISSUE...

Varroa Mite	1
President's Message	2
OSBA Board Meeting	3
Conference Registration	6
Conference Agenda	7
Resources	8
Regional News	10
Keeping Bees	12
Honey Shows	13
Upcoming Events	14
Oregon Garden Map	14

[www.orsba.org](http://www.orsba.org)

OREGON STATE BEEKEEPERS ASSOCIATION

WEBMASTER: Erin Olmon

[orsbawebmaster@gmail.com](mailto:orsbawebmaster@gmail.com)

[www.oregonmasterbeekeeper.org](http://www.oregonmasterbeekeeper.org)

OREGON MASTER BEEKEEPER PROGRAM

*A Joint Venture of OSBA and the*

*Oregon State University Extension Service*

[info@oregonmasterbeekeeper.org](mailto:info@oregonmasterbeekeeper.org)

**Image above:** Yes, definitely, *what we want!*

For the forms for subscriptions to *American Bee Journal* and OSBA membership/renewals, please send an e-mail to [osba.newsletter@gmail.com](mailto:osba.newsletter@gmail.com) or phone 503.772.3486. We'll get copies to you, either by e-mail or mail, this month.

## VARROA MITE ALERT

Hope all of you had a relatively successful bee year with strong hives and significant honey production, and have prepared your hives for successful overwintering. I just wanted to take this opportunity to alert/caution you about possibility of high mite populations in the colonies this year due to an unusually long bee season. As you all are aware we had a long bee season this year (at least in the Willamette Valley) as a result of warm weather that prevailed for almost more than 7 months. Longer brood cycle (abundance of larvae) usually results in higher mite populations, as the mites get a greater opportunity to breed and increase their populations relative to bees. Most of you might agree that this year was a year with longest brood cycle seen in the recent past (I have been in Oregon only for the past 6.5 years, so can't go beyond that number). It has been reported that mite populations could increase exponentially (up to about 50-fold increase) in years when the brood is present in colonies almost round the year (Martin 1998).

The economic threshold to treat Varroa mites in general for temperate areas is considered to be about 3% or higher in Fall, but as economic threshold depends on several factors it is not ideal to always rely on this magic number. In Oregon during the past six years we have documented mite intensities ranging between 3 % and 5% in Fall (August sampling). We observed significantly higher mite intensities this year (2015). The average mite intensity observed in backyard beekeeper colonies was 7%, whereas average mite intensity documented in commercial beekeeper colonies was about 3%. In few backyard beekeeper colonies we observed mite intensities as high as 32%, which is alarming.

If you treated your colonies for Varroa on time during July or August then probably you may have your mite populations under control, but still I urge you to monitor mites one more time before overwintering to make sure that the treatments that you used were effective and your current mite populations are not at damaging levels. If your mite levels are still high then please consider using an oxalic acid treatment if feasible when there is no brood (possibly during November).

If you did not use any Varroa mite treatments yet, then please assess the mite populations using alcohol wash or powdered sugar method as soon as possible and consider treating your hives with oxalic acid when there is no brood in the colonies. Oxalic acid was recently approved by EPA and is available from the bee supplier Brushy Mountain Bee Farm (<http://www.brushymountainbeefarm.com/?gclid=CLzrqIrB98cCFUiEfgods-gJ6w>).

Following are some consequences of inadequate or no Varroa mite control this fall:

- Bee population may decline significantly or the colonies might totally collapse.
- Colonies that survive the winter will start upcoming year/season with higher mite loads and hence could reach damaging levels soon by late spring or summer.
- High mite infested colonies may contribute to higher mite drifting via robbing bees to other beekeeper colonies and your existing healthy colonies, as your mite

*Continued on page 5*

MESSAGE FROM THE PRESIDENT



The honey harvest is over, mite treatments are getting wrapped up, the bees are stuffing their hives with syrup and getting fat for the winter. Time to slow down a bit and start thinking about what I need to be doing over the next few months. I will also be getting ready for conference, registering, making hotel reservations and paying my OSBA dues. I will also be renewing my membership in the American Beekeeping Federation, the organization that watches out for beekeepers at a national level. I feel the national visibility is important and having them watch out for all beekeepers at the national level is something we can not afford to take lightly. As a member of the OSBA I would encourage you to also become a member of the AFB. Likewise if you know beekeepers that are not members of the Oregon State Beekeepers Association you should be encouraging them to join. In addition to the obvious benefits like *The Bee Line*, raising money for research, the State Fair and the fall conference there are the less visible benefits like testifying before the legislature on four different bills just this year that could or will have an impact on beekeeping. Several local municipalities had been considering beekeeping ordinances that through the OSBA members testimony were either made much less restrictive or voted down completely because of that testimony.

I would also like to mention that at the conference this year we are going to make an effort to recognize the local branches that donate to research. The OSBA matches funds up to \$500 for donations made by any of the local clubs/branches to the OSU honey bee research lab. This year we are going recognize those donations during the research luncheon at the conference. A representative from your local club can come to the luncheon and present the funds there, or if this won't work for your club you can send a check to the OSBA treasurer and we will recognize your donation at luncheon.

Take care, keep your bees fat and I hope you at the convention this year.

*Paul*

**Healthy Queens = Healthy Hives**

**Order Now...Don't Bee Left Out!**

# YEAR ROUND QUEENS

**Olivarez Honey Bees, Inc.**

**CALIFORNIA (530) 865-0298**

**HAWAII (808) 328-9249**

**TOLL FREE (877) 865-0298**

P.O. Box 847 Orland, CA 95963  
Fax (530)865-5570

**Big Island Queens**  
A Division of Olivarez Honey Bees, Inc.

**OHB**  
Premium Quality Queens  
Produced in the Heart of Northern California  
Since 1963

**BIQ**

VISA MasterCard

[www.ohbees.com](http://www.ohbees.com)

## OREGON STATE BEEKEEPERS ASSOCIATION BOARD MEETING MINUTES

Canby, Oregon ❖ September 12, 2015

**Attendees:** Bill Catherall, Jeff Clark, Jan Lohman, Jordan Dimock, Harry Vanderpool, Joe Maresh, Jason Rowan, Kenny Williams, Jeff Milligan, Paul Andersen, Bunny Cramer-Carter, Paul Maresh and Dick Temple.

President Paul Andersen called the meeting to order at 4:06 PM.

Jordan Dimock made a motion to accept the minutes as printed in *The Bee Line*. The motion was seconded and passed.

### Reports

#### Treasurer

Oregon State Beekeepers received a \$200.00 donation from a family in Sun River, who received help by an Oregon State Beekeeper. The homeowners were thankful for the help and donated to OSBA Research.

Jeff Milligan wanted to thank Rosanna Mattingly because of her very accurate and thorough database, it has been a help in establishing the membership database in QuickBooks. The Accounting firm has been helpful and by the end of the year 2015 all data will be in the system.

2014 Tax Return – Our return is almost complete. It is due on the 15th of September. There are a couple more expenditures to check. The postcard level reporting was retracted because our pass through was \$50,000.00 during 2014. If the grant goes through, then we will drop back to the postcard reporting level for 2015.

QuickBooks Update – QuickBooks must be updated every three years in order to receive support. Oregon State Beekeepers QuickBooks is due for the upgrade.

2014 OSBA Conference – The total intake for the conference was \$30,000.00, of which \$3,800.00 was membership renewals. The expenses were \$22,000.00. The total amount cleared for the 2014 Conference was \$4,200.00. This doesn't include additional grant money. The total registration for the 2014 Conference was 226. There were 96 membership renewals. \$16,260.00 was the total received for the Auctions and the raffle quilt.

2015 OSBA Conference – Thus far there are 34 people registered for Conference which includes four vendors. The method of registration for these attendees is 43% on the OSBA Website with 57% being mailed in.

The official OSBA PayPal account has been set up. Being

registered as a Nonprofit gives OSBA a discount from PayPal. It is tied to our tax ID# and OSBA is better protected for fraud and refunds.

4-H Awards – Oregon State Beekeepers has received requests for rewards for a total of four students. The total to be paid is \$40.00. The motion was made to pay these requests for this year and make a policy for future years. Jan Lohman made the motion and Paul Andersen seconded it. The motion passed.

State Fair Booth – The final expenses for the state fair booth were \$2,630.11. The event committee was able to pick up some sponsorship from Brushy Mountain Bee Farm in the amount of \$1,000.00. The sponsorship hasn't been paid yet but will go directly back to OSBA. The motion was made to pay the Fair Booth Expenses by Jordan Dimock and seconded by Paul Maresh. Motion passed.

OSBA Account Balances – The current OSBA Checking balance is \$25,835.19. The Savings balance is \$28,925.42, of which \$15,000.00 is the Silent Auction and Oral Auction earnings from the 2014 Conference and will be donated to OSU at the 2015 Conference.

Currently, there are four OSBA credit cards. This number will be reduced and changed after the new Board is voted in this November. There is a zero balance on all the cards with the exception on one which pays the monthly storage fees and one that paid the club insurance and website fees. The new IRS ruling makes it mandatory that all business credit cards are tied to personal social security numbers.

Another new IRS law is, OSBA has to spend at least 30% of total income on the OSBA Mission and Purpose. We must document our education effort; the Regional Clubs should track their hours and efforts toward this purpose.

#### Grants

Jan Lohman reported on a new USDA Specialty Crop Block Grant Program. This is a Multi State Program. This grant was announced on September 4, 2015, and the USDA is seeking applications for this new opportunity.

The link below is for the press release:

<http://www.ams.usda.gov/press-release/usda-announces-funding-seeks-applications-specialty-crop-multi-state-program>

Oregon has not yet decided if we will become a host state for this program. If anyone feels strongly that Oregon should become a host state, then please share feedback indicating this and why. Send emails to: Shannon Brubaker, Specialty



Crop Block Grant Program Manager, Oregon Department of Agriculture. Email address: sbrubaker@oda.state.or.us.

### **2015 Conference Reminder**

The 2015 Oregon State Beekeepers Conference will be November 6–8, 2015, at Oregon Garden in Silverton, OR.

### **Budget 2015**

The 2015 Budget was passed by an email vote of the board in late July. President Paul Andersen introduced a few potential year end expenses.

1. Travel for Dewey Caron. OSBA will reimburse Dewey up to \$1,000.00 for fuel and mileage. Because of the New IRS reporting rules OSBA will ask Dewey to turn in receipts and mileage logs.
2. American Beekeeping Federation. It is in the Oregon State Beekeepers constitution that OSBA be a member of the ABF. It was unclear which level we are. Jan Lohman will double check and communicate the appropriate dollar level to pay.
3. In the past OSBA paid \$125.00 to the Oregon Business Council. It was decided to not continue this payment as the board did not know the benefits it provided us.
4. Honey Bee Health Coalition. The HBHC has published a comprehensive document on Varroa Mites. It is free and available to anyone on their website. They have also worked hard on Tech Team funding and are working on the Pollinator Plantings on Public Lands. We propose a \$500.00 membership payment fee to the HBHC.
5. Ag. in the Classroom and the Summer Ag. Institute. The past donations have been \$250.00 for each project. We have always donated but have never received feedback as to the results of these programs. Jeff Clark volunteered to do more research on these two items and report back. If the board receives good reviews then we will continue the donations.

Joe Maresh made a motion to accept these amendments to the 2015 Budget. Jan Lohman seconded and the motion passed.

### **Oregon Legislative Activities**

HB 3362 Passed. Establishes pollinator health outreach and education plan.

HB 3361 Died in Committee. Appropriates moneys from General Fund to Higher Education Coordinating Commission for OSU Extension Service activities relating

to pollinator health.

HB 2653 Passed. Relating to location of apiaries. Requires Oregon State University Extension Service, in consultation with State Department of Agriculture and beekeeping organizations, to establish best practices for beekeeping within residential areas.

### **New Business**

#### **Lifetime Memberships**

The OSBA Board has identified two people to be awarded for Lifetime Memberships. These awards will be announced at the 2015 Conference in Silverton.

#### **OSBA Nomination Slate for 2016**

##### *Officers*

President: Harry Vanderpool  
Vice President: Jason Rowan  
Secretary: Bunny Cramer-Carter  
Treasurer: Jeff Milligan

##### *Regional Representatives*

North Coast: Terry Fullan  
South Coast: Mureen Walker  
Columbia Basin: Bill Edwards  
Eastern Oregon: Jordan Dimock  
Portland Metro: Tom Cinquini  
Southern Oregon: Sarah Red-Laird  
North Willamette Valley: Steve Coffman  
South Willamette Valley: To be announced.

#### **Endowment Report**

This is a report for the following Endowments:

Northwest Apiculture Fund for Honey Bee Research, Extension and Education. This fund acts as a long term investment in the apiculture program at Oregon State University. Current principal is \$82,610. Current expendable interest is \$2,150.00

The Herman A Scullen Fellowship Fund. The purpose of this fund is to support a graduate student at OSU who is pursuing a path toward a career in apiculture. Current principal is \$40,536.00. Current expendable interest is \$21,529.00.

OSU Apiculture Endowment. This fund is different from the Northwest Apiculture Fund because this fund allows for the expenditure on “any other uses most similar to original intent”. Current principal is \$63,497.00. Current expendable interest is \$104,276.00.

Kenny Williams is the current Chair for the Northwest Apiculture Fund. The three OSBA members are Kenny Williams, Jason Rowan and George Hansen. Kenny Williams is retiring and asked to step down as Chair. President Paul Andersen appointed Jason Rowan to the Chair of Northwest Apiculture Fund.

### Regional Clubs Wishing to Donate at the OSBA Conference

Any of the regional clubs that wish to donate to the OSBA Research Fund and have their funds matched up to \$500.00 by OSBA should make their checks out to: Oregon State Beekeepers Association. The memo line should read: Research Fund. The donations can be presented to OSBA at the Saturday Benefit luncheon or anytime during conference. Regional clubs may also mail their donation any time before conference to: Jeff Milligan, P.O. Box 20548, Keizer, OR 97307

The next Oregon State Beekeepers Board Meeting will be held on November 6, 2015.

The motion was made to adjourn. The motion was passed and the meeting ended at 6:56 PM.

Respectfully submitted,

*Bunny Cramer-Carter*

### Varroa—Continued from page 1

infested dead colonies may be robbed by other strong colonies and aid in greater mite dispersal.

Also, please continue feeding protein to your colonies if pollen stores are not adequate in the colonies. Protein feeding not only helps with brood rearing, but also helps boost the immune system of bees. We have observed colonies to consume protein until October 25 in the Willamette Valley and few other locations in Oregon when the weather is still OK (temperatures around 55 to 60°F).

Following is a question relevant to Varroa mite biology that an Oregon beekeeper asked me few months ago:

**Question:** How many days is the female Varroa mite outside of the capped brood before it re-enters another cell for reproduction? Do the young female mites that emerge along with the new bees also take the same amount of time to re-enter another larval cell for reproduction?

**Answer:** The time a female Varroa takes to re-enter (re-infest) a new cell depends on the availability of older larva (ready to be capped) to enter, and also on the number of bees in the hive at that point of time. One study showed

that on average female mites take about 4 to 6 days to re-infest new larval cells. In a lab study, female mites that were artificially reintroduced into new cells with appropriate aged larvae (ready to be capped) immediately after emergence from a cell were able to reproduce successfully without any problems. Young female mites that emerge along with the foundress mite (parent mite) need time to achieve full maturity and hence may take a little more time to enter a cell for reproduction than the parent mite. Research pertaining to these new young mites is scarce, hence providing an average time for infestation is difficult.

Regards,

*Ramesh Sagili*  
Oregon State University

### REMINDERS



Your bee samples are welcome in the OSU Bee Lab at the OSBA fall conference!

The Honey Bee Health Coalition guide for beekeepers making decisions about Varroa control is at: <http://honeybeehealthcoalition.org/Varroa/>.

The University of California Cooperative Extension newsletter (May/June 2015) review of options for Varroa mite management is at: [http://elninobeelab.ucdavis.edu/\\_assets/newletters/MayJune%202015.pdf](http://elninobeelab.ucdavis.edu/_assets/newletters/MayJune%202015.pdf).

"Breeder and Shipper of Northern Calif. Italian Queens"

## Wooten's Golden Queens, Inc



**Top Quality Italian Queens**  
**Now Accepting 2015 Orders**  
**50 or more Queens \$21.00 + Shipping**

***Our Involvement with Bee Informed Tech Team ensures queens are top quality & performs well in all regions.***



**Shannon & Glenda Wooten**  
**11189 Deschutes Rd**  
**Palo Cedro Ca 96073**  
**Tel (530) 549-3555**  
**[www.wootensgoldenqueens.com](http://www.wootensgoldenqueens.com)**

OSBA Fall Conference 2015   
 Oregon State Beekeepers Association

**November 6–8, 2015**

**Oregon Garden Resort**

895 W Main Street – Silverton, Oregon 97381

Individual and Family Preregistration

Name: \_\_\_\_\_ Date: \_\_\_\_\_

Company: \_\_\_\_\_

Address: \_\_\_\_\_

City: \_\_\_\_\_ State: \_\_\_\_\_ Zip: \_\_\_\_\_

Contact Phone: \_\_\_\_\_ email: \_\_\_\_\_

Additional Family Members

Names: \_\_\_\_\_

Event Preregistration			Cost
Friday Night Hospitality Room			Complimentary
Full Conference	Individual - \$150 Family - \$180	\$	
Saturday Conference Only	Individual - \$90 Family - \$110	\$	
Sunday Conference Only	Individual - \$90 Family - \$110	\$	
Saturday Benefit Luncheon	\$28 per Person	Number Attending: _____	\$
Saturday Banquet	\$50 per Person	Number Attending: _____	\$
Sunday Cascadia Queen Breeders Luncheon	\$28 per Person	Number Attending: _____	\$
Research Donation *			\$
Annual OSBA Dues	\$40 per Person	Number: _____	\$
<b>Total Cost</b>			<b>\$</b>

Please make check **payable to OSBA** and mail with this completed registration form, **postmarked no later than October 24**, to: Jeff Milligan, P.O. Box 20548, Keizer OR 97307. To register online, visit: <http://osba2015.orsba.org/>

Attendees qualify for preregistration rate if application form (with registration fee) is postmarked on or before October 24. **Late or on-site registration rates are: One Day Individual \$110.00, One Day Family \$130.00; Full Conference Individual \$190.00, Full Conference Family \$220.00.**

Note: Hotel reservations are not included in these costs. Special rates are available at the Oregon Garden Resort: (503) 874-2500 Ext 0

\*The Oregon State Beekeepers Association is a 501(c)(3) charitable organization. Your donation is tax deductible as allowed by law. Please consult your accountant for details.

**OSBA Fall Conference 2015**  
**Oregon Garden ❖ November 6–8, 2015**  
**Tentative Conference Agenda**

**Friday, November 6**

- 6:00 PM **Registration**  
 7:00 PM **Kick-Off Wine and Cheese Social** with  
 8:00 PM **“Partly to Mostly” – Forecasting Weather . . .**  
 Rufus LaLone, The Weather Café®

**Saturday, November 7**

- 7:30 AM **Registration**  
 8:00 AM **Silent Auction** Begins  
 8:15 AM **Welcome & Announcements**  
 Paul Andersen, OSBA President  
*General Session*  
 8:30 AM **Oxalic Acid and Concepts in Mite Management**  
 Randy Oliver, ScientificBeekeeping.com

8:30 AM– **Bee School (Concurrent)**

3:00 PM *Thom Trusewicz, Director*

- 9:15 AM **Bee Informed Partnership**  
 Ellen Topitzhofer, Oregon State University

10:00 AM **Break**

**Deadline for Entries for Honey Show**

- 10:15 AM **2J Honey Farms**  
 Jay Miller, 2J Honey Farms

- 11:00 AM **National Honey Board Report**  
 George Hansen, Foothills Honey

- NOON **Luncheon (Preregistration required)**  
**Oregon Master Beekeeper Program**  
 Carolyn Breece, Oregon State University

- 1:15 PM **Wholesale Honey Considerations**  
 Alan Turanski & Julie Willoughby, GloryBee

- 2:00 PM **VanCalcar Apiaries, Amity, Oregon**  
 Nick VanCalcar, VanCalcar Apiaries

2:45 PM **Break**

- 3:00 PM **Changes on the Landscape Impacting Honey Bee Forage and Nutrition**  
 Pete Berthelsen, Pheasants Forever

- 3:45 PM **Swarm Fundamentals**  
 Karessa Torgerson

4:00 PM **Silent Auction Ends**

4:30– **OSBA General Membership Meeting**

5:45 PM

To register by mail for the conference, see page 6. Visit <http://osba2015.orsba.org> to register online, for additional conference information, and for conference updates.

Please note that preregistration is definitely encouraged this year!



- 6:00 PM **Social Hour**  
 7:00 PM **Banquet (Preregistration required)**  
 Dr. Clint Walker, Keynote  
 Benefit Auction to Follow

**Sunday, November 8**

- 7:30 AM **Registration**  
 8:15 AM **Welcome & Announcements**  
 Paul Andersen, OSBA President  
*General Session*  
 8:30 AM **Wax Is Wax**  
 George Hansen, Foothills Honey  
 9:15 AM **Beekeeping Mistakes, Lessons Learned**  
 Jay Miller, 2J Honey Farms

8:30 AM– **Mead Workshop (Concurrent)**

10:00 AM *Andrew Schwab, Director*

10:00 AM **Break**

- 10:15 AM **Understanding Bee Biology Over the Course of a Season**  
 Randy Oliver, ScientificBeekeeping.com

- 11:00 AM **Pests, Pathogens and Poor Nutrition: Understanding and Mitigating**  
 Dr. Ramesh Sagili, Oregon State University

- NOON **Luncheon (Preregistration required)**  
 Cascadia Queen Breeders  
**Panel of Northwest Queen Producers**  
 Jordan Dimock, J & TD Apiaries, Moderator

- 1:15 PM **Package & Queen Production**  
 Pat Heitkam, Heitkams' Honey Bees

- 2:00 PM **Effects of a Neonicotinoid Insecticide on Honey Bee Health and Physiology**  
 Stephanie Parreira, Oregon State University

2:45 PM **Break**

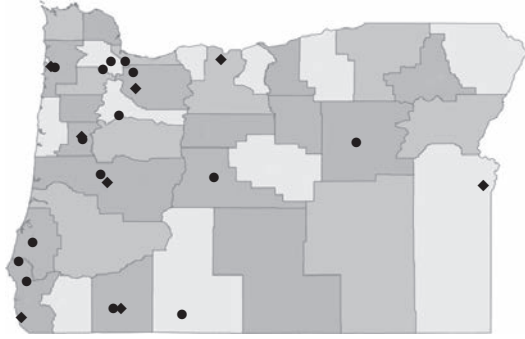
- 3:00 PM **Maximizing Honey Production**  
 Dr. Clint Walker

- 3:45 PM **Final Comments**  
 Paul Andersen, OSBA President

4:00 PM **Adjourn**



## Oregon State Beekeepers Association EXECUTIVE BOARD AND REGIONAL ASSOCIATIONS



### OSBA OFFICERS

**President:** Paul Andersen  
19255 SW Prospect St, Aloha 97007  
503.332.5410; paulkandersen@frontier.com

**Vice President:** Harry Vanderpool  
7128 Skyline Rd S, Salem 97306  
503.399.3675; shallotman@yahoo.com

**Secretary:** Bunny Cramer-Carter  
PO Box 779, Stayton 97383  
503.703.8546; dbcramer@hotmail.com

**Treasurer:** Jeff Milligan  
PO Box 20548, Keizer 97307  
503.588.7224; milligan50@msn.com

**Past President:** Jan Lohman  
77225 Colonel Jordan Rd, Hermiston 97838  
541.567.3209; 541.980.0304 (cell)  
jan.lohman55@gmail.com

### ♦ OSBA REGIONAL REPRESENTATIVES

**North Coast:** Terry Fullan  
39450 Northfork Rd, Nehalem 97131  
503.368.7160; tfullan@nehalem.tel.net

**South Coast:** Mureen Walker  
25055 Pistol River Loop Rd, Gold Beach 97444  
541.373.7010; mureen98@gmail.com

**Columbia Basin:** Bill Edwards  
5051 Lost Lake Rd, Hood River 97031  
541.354.2223

**Eastern Oregon:** Jordan Dimock  
2635 Mitchell Butte Rd, Nyssa 97913  
541.372.2726

**Portland Metro:** Tom Cinquini  
1172 S Sycamore St, Canby 97013  
503.547.5386; tomcinquini@gmail.com

**Southern Oregon:** Sarah Red-Laird  
PO Box 3257, Ashland 97520  
541.708.1127; sarah@beegirl.org

Updates and resources available at:  
[http://www.extension.org/bee\\_health](http://www.extension.org/bee_health)  
and <https://beeinformed.org>.



**North Willamette Valley:** Steven Coffman  
2540 Greenwood Rd S, Independence 97351  
503.838.2981

**South Willamette Valley:** Jason Rowan  
80881 Turkey Run Rd, Creswell 97426  
541.942.6479; beetanical@q.com

### • OSBA REGIONAL ASSOCIATIONS

#### Cascadia Queen Breeders

Meets quarterly; contact the secretary for information.

**Chair:** Paul Maresh

503.283.2060; pmaresh@spiretech.com

**Vice Chair:** James Hensel

**Secretary:** Ken Anthony—klanthony1@comcast.net

**Treasurer:** Tom Chester

#### Central Oregon Beekeepers

Meets 6:00 PM, fourth Tuesday (except December)

The Environmental Center, 16 NW Kansas Ave, Bend

Visit [www.orsba.org](http://www.orsba.org), Message Board, Central Oregon

Branch. For information and meeting details, e-mail:

[contact@cobeekeeping.org](mailto:contact@cobeekeeping.org)

**Co-President:** Allen Engle—[aengle@bendbroadband.com](mailto:aengle@bendbroadband.com)

**Co-President:** Patricia Moreland—[oregonpat@gmail.com](mailto:oregonpat@gmail.com)

**Website:** [www.cobeekeeping.org](http://www.cobeekeeping.org)

#### Coffee Creek Beekeepers

#### Coos County Beekeepers

Meets 6:30 PM, third Saturday (except December)

Ohlsen Baxter Bldg, 631 Alder St, Myrtle Point

**President:** John Gardner—541.572.3847

**Vice President:** Shigeo Oku—541.396.4016

**Secretary:** Bobbie Gardner—541.572.3847

**Treasurer:** Jane Oku

541.396.4016; [janeoku1958@gmail.com](mailto:janeoku1958@gmail.com)

#### Douglas County Beekeepers

Meets 7:00 PM, first Wednesday

Third floor, Douglas County Courthouse

**Contact:** [douglascountybees@gmail.com](mailto:douglascountybees@gmail.com)



FAMILY OWNED  
SINCE 1975



### Beekeeping Supplies

GloryBee carries a wide selection of beekeeping supplies for everyone from the hobbyist beekeeper to the professional. Shop with us online or request our FREE catalog today.

EQUIPMENT • TOOLS • CONTAINERS • BOOKS • GIFTS  
HONEYSTIX • ROYAL JELLY • BEE POLLEN • PROPOLIS



Home of GloryBee Beekeeping  
[GloryBee.com](http://GloryBee.com) | Eugene, Oregon | (800) 456-7923



**John Day River Beekeepers**

Meets quarterly

**President:** Matt Allen

541.934.9101; apricotapiaries@gmail.com

**Education Coordinator/Secretary:** Liz Lovelock**Klamath Basin Beekeepers**

Meets 9:00 AM, last Saturday (except Nov/Dec)

OSU Extension, 3328 Vandenberg Rd, Klamath Falls

**President:** Paul Davitt

president@klamathbeekeepers.org

**Vice President:** John Wilda

vicepresident@klamathbeekeepers.org

**Secretary:** Judy Olson

secretary@klamathbeekeepers.org

**Treasurer:** Ray Rutler

treasurer@klamathbeekeepers.org

**Website:** www.klamathbeekeepers.org**Lane County Beekeepers**

Meets 7:30 PM, third Tuesday, Trinity United Methodist Church, 440 Maxwell Rd, Eugene

**President:** Pam Leavitt

541.344.4228; pamseaver2000@yahoo.com

**Vice President:** Max Kuhn—541.997.7390**Secretary:** Jodi Wiktorowski**Treasurer:** Polly Habliston**Website:** www.lcbaor.org**Linn-Benton Beekeepers**

Meets 6:30 PM, third Wednesday, Corvallis Waldorf School, 3855 NE Highway 20, Corvallis

**President:** Steve Oda

541.745.7227; steve@lbba.us

**Vice President:** Everett Kaser

541.924.9214; everett@lbba.us

**Secretary:** Robert Williams

541.740.4705; robert@lbba.us

**Treasurer:** Suzi Maresh

541.967.9607; suzi@lbba.us

**Website:** www.lbba.us**Oregon South Coast Beekeepers**

Meets 6:00 PM, third Tuesday, OSU Extension Office located at the Fairgrounds in Gold Beach

**President:** Jim Sorber**Vice President:** Mark St. James**Secretary:** Wayne Berry

berrydogs@gmail.com

**Treasurer:** Barbara Fitts**Portland Metro Beekeepers**

Meets 7:00 PM, second Thursday, Clackamas Community College, Clairmont Hall, Room 118, Oregon City

**President:** Joe Maresh

503.703.5060; joemaresh@bctonline.com

**Vice President:** Rex McIntire

503.720.7958; remcintire\_5@msn.com

**Secretary:** Patty Anderson

503.887.7057; wiseacrefarms@me.com

**Treasurer:** Barb Derkacht

503.631.3063; bderkacht@yahoo.com

**Website:** portlandmetro.org**Portland Urban Beekeepers**

Meets 6:30 PM, first Wednesday, Alberta Abbey, 126 NE Alberta St, Portland

For information, e-mail: officers@

portlandurbanbeekeepers.org

**President:** Bill Catherall—503.572.6467

president@portlandurbanbeekeepers.org

**Vice President:** Sylvan Zimmerman

vice-president@portlandurbanbeekeepers.org

**Secretary:** Janet Shea-Tangeman

secretary@portlandurbanbeekeepers.org

**Treasurer:** Keith Gilman

treasurer@portlandurbanbeekeepers.org

**Website:** portlandurbanbeekeepers.org**Southern Oregon Beekeepers**

Meets 7:30 PM, first Monday, Southern Oregon

(6:30 PM hands-on demo at SOBA hives thru bee season)

Res &amp; Ext Ctr, 569 Hanley Rd, Central Point

**President:** John Jacob

541.582.BEES; john@oldsolenterprises.com

**Vice President:** Ron Padgett

541.592.4678; padgett25@frontiernet.net

**Secretary:** Dana Rose—puckamok@yahoo.com**Treasurer:** Cheryl Housden

541.955.5146; chousden@earthlink.net

**Website:** southernoregonbeekeepers.org**Tillamook County Beekeepers**

Meets 7:00 PM, second Tuesday (except December)

Fresh Cafe, 9120 5th Street, Bay City

**President:** Bob Allen—503.322.3819**Vice President:** Jim Fanjoy

503.637.5522; jim@fanjoy.com

**Secretary:** Jeffrey Hall

503.739.0893; jlh434@mac.com

**Treasurer:** Stan Scotton

503.232.4945; 4scotton@gmail.com

**Tualatin Valley Beekeepers**

Meets 6:30 PM, last Tuesday

225 S First Street, Hillsboro

**Contact:** tualatinvalleybeekeepers@gmail.com**President:** Jeff Clark**Vice President:** Bob Falconer**Secretary:** Jillian Hettinga**Co-Treasurers:** Barb Falconer & Jerry Maasdam**Web:** www.facebook.com/TualatinValleyBeekeepers**Willamette Valley Beekeepers**

Meets 7:00 PM, fourth Monday, Chemeketa

Community College, Building 34, Room A, Salem

**President:** Richard Farrier

541.327.2673; rfarrierfarms@gmail.com

**Vice President:** Mona Kanner**Secretary:** Emily Cross**Treasurer:** Laura Evans**Website:** http://wvbahive.org

## REGIONAL NEWS

### Regional Representatives

#### North Coast

The Tillamook Beekeepers were pleased to have Dan Speers of Bee Rite Apiaries as our guest speaker. Dan has 18 years of experience and is a mentor for the Oregon Master Beekeeper Program. His presentation was on the *Varroa destructor* mite. It included history and infestation levels but the emphasis was on treatment options. Each option was thoroughly evaluated with emphasis on the use of oxalic acid. Dan explained in detail the three oxalic acid options: spray, drip, or vaporize. He brought with him many visuals including syringes and a battery powered vaporizer. Dan is available at [dspeers2@yahoo.com](mailto:dspeers2@yahoo.com) for presentations to other beekeeper groups. His presentation was highly organized and comes highly recommended!

Elections for next year will be held at our November meeting which is also our annual honey tasting event. It is always amazing how multi-floral honeys from the same general area can taste so different.

A few large swarms have happened recently. One was in progress while one of our beekeepers was driving down the road. It landed on tree next to the road and by time he got back with his box it had formed its iconic shape and was an easy catch. How lucky those bees are to have such a veteran caretaker! —*Claire Moody*

#### South Coast

Overwintering was the subject of a fascinating presentation by a couple who has always supported their family by commercial beekeeping and, living in Idaho, but visiting the south coast for the summer and attending the three meetings at OSCBA, shared their experiences of dealing with the cold. One winter the hives were covered over by snow and when the family members dug through to the hives, they found that the warmth of the bees had melted the snow around the sides of the hives and since it was warm down there under the snow, the bees made extensive tunnel systems through the snow and were flying all around down there. The family shipped their bees to California for wintering, but then decided to change to keeping them locally, indoors. Now they put all the hives into a building that is kept at 42 degrees and in total darkness. The hives aren't closed up, since the bees won't fly in those conditions and the building remains sealed up for the entire time, from October to February. The bees generate so much heat that it is challenging for the air conditioners to keep the temperature down. The hives are weighted before and after the overwintering and colonies consume an average of only about 6–8 pounds each of honey during those months. That alone is a huge savings

for keeping thousands of colonies alive for those months of dearth, compared with the expense of feeding them through the winter previously. Club members were glad to hear that this commercial beekeeper family uses essential oils. “It doesn't get rid of the mite problem,” they say, “but it helps.” When we asked how much they add, it was like “about size of an ice cream scoop” Then we realized that they were dealing with barrels, buying large quantities and mixing into large vats. They are using a mixture of sugar and corn syrup. They are not entirely in favor of the later. “Corn syrup they store, sugar they brood up,” they said of the bees, “We want new bees going into the winter,” they explained. Ideally the double deep Langs, the 20 frames, will weigh about 130 pounds. They also supplement with Honey Bee Healthy as well as the peppermint and other essential oils. They now also add a bit of Clorox. That really helps, they say, to prevent “the white mummies” . . . the chalk brood. Members reacted in surprise, about the Clorox, but soon realized that we are drinking chlorine in our water so that must be similar. The essential oils the family adds in packets. They used make their own, but now get them from a company in Montana. Carla Fletcher pointed out that when oil is added to the syrup it floats, so that when the syrup gets low, then there can be such a concentration of the oil that it can have a toxic effect. A visiting beekeeper pointed out that honey is a natural emulsifier for the oils, so mix well.

The couple passed around a jar of anise honey that was about forty years old and had been gifted to them. Members each used a disposable spoon to sample the dark rich licorice flavor. Carla, as has been her custom for years, passed around straws of honey, this time one of the few dark ones that she favors, Coriander. It won many praises also. —*Mureen Walker*

### Regional Associations

#### Cascadia Queen Breeders

This year at the OSBA conference the CQB will be having a few Lunch tables with Queen Breeders present to help open communications between queen breeders and the bee keeper community. We are asking this group to submit questions that will be asked of the queen breeders during the luncheon to help transfer information to others at the table. If you have a question for the breeder, please send it to Paul Maresh using his email address [pmaresh@spiretech.com](mailto:pmaresh@spiretech.com). —*Ken Anthony*

#### John Day River Beekeepers

The John Day River Beekeepers booth at the Grant County Fair was a big success. The observation hive generated a lot of interest and excitement. Special thanks to Sarah Russ and Ron Phillips for staffing the table on Friday and Saturday.

We had a field day August 29 to talk about fall mite treatment, combining weak hives, and winter prep. There were only 4

people present so everybody got a lot of hands on time.

The big news in the region has been the Canyon Creek Fire. A total of 39 homes were lost. Several beekeepers in the area had to move bees but to my knowledge, no managed hives were lost. Not the case with feral colonies. One afternoon I got a phone call from a woman in the Seneca area who was experiencing strange bee behavior. She was not a beekeeper herself, and did not know of any in her region. What she described was every afternoon honeybees would cluster, several melon sized clusters, on the posts of her front porch. She said it had been very smoky. The bees were docile and not a bother, but they would be gone in the morning and back again in the afternoon. "Sounds to me like the bees got the Sheriff's evacuation notice," I told her. She was mostly curious and concerned for the bees. I told her I could come out, or send another beekeeper out, except all the roads en route were closed due to fire activity. Fortunately, the fires seem to be subsiding thanks to a bit of rain (and snow in the high country).

Rabbitbrush is blooming and there is plenty of pollen available but the nectar flow seems to be over and done and the bees are getting robbly.

—Matt Allen

### Klamath Basin Beekeepers

Hello from the Klamath Beekeepers! Fall is upon us we thought...3 days of night time temps in the 20s then Woops! Back into the nineties. The 26 degree night was

enough to do in most of the ornamental flowering plants (zinnias, cosmos, etc.) except for lavender, borage, mints, hollyhock and Longwood blue spirea (hardier than I suspected!). The late blooming ornamental asters were undaunted by the freeze but the sunflowers and other asteraceae bloomed 1½ months early and have already petered out. Trusty late flowering rubber rabbitbrush and grey rabbitbrush (the yellow flowering brush seen along hwy 97 in central Oregon) are strongly flowering and the bees are packing in the pollen.

Now is when central Oregon beekeepers are pulling off honey supers and treating for mites. This year my mite counts are low, but not low enough to ignore. So out with the treatment of choice. This year we are considering treating again in the broodless period from November through February with the newly approved oxalic acid vaporizer as you do not have to open the hive to affectively treat, so the cold weather doesn't matter. As a little aside . . . My daughter keeps three hives in Eugene and has approximately 5 apiaries in close proximity on her 2 block-long street. She is the only one that treats for mites (which she routinely does 2 times a year after a bad experience with Parasitic Mite Syndrome). And she has ten fold the mite load that we do in rural central Oregon. Mite it bee (puns intended) that those bee havers that do not treat their hives may be the reason beekeepers have not been able to completely control this problem . . .

Interesting food for thought.

—Judy Olson

### Portland Metro Beekeepers

Portland Metro Beekeepers held our September meeting on Thursday, September 10th. Clackamas Community College

and the Oregon State Extension service held a Small Farm School on Saturday, September 12th at CCC. Several of our club members led two sessions. The first session was on Beginning Beekeeping and the second was a more advanced session for Bee Economics and products of hives. It was very successful and well attended. It was a great way for our club to share Beekeeping with the community. Thanks to Kendal Smucker, Joe Maresh, Mark Manning,

### Old Sol Apiaries

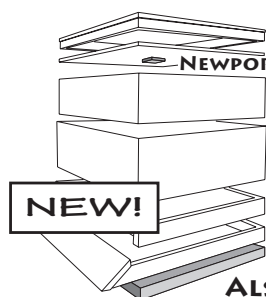
Your source for Oregon bred queens and nucs. Our queens are double vetted and matured longer for higher confidence and greater acceptance rates.



Selecting for productive, mite-tolerant queens since 2000

## ALSEA HIVE SCALE

REMOTELY MONITOR HONEY RESERVES  
REDUCE Colony Losses ~ INCREASE Honey Harvest



NEWPORT MONITOR

- WiFi
- EASY TO USE
- EASY TO INSTALL

ALSEA SCALE

Introductory Offer:

System Recorder: \$168/Apiary  
+ Scale: \$50/Hive (up to 20 hives)

Compatible with NEWPORT TEMPERATURE/HUMIDITY MONITORS  
See website for details

On Sale in October at the WAS Conference

info@bee-certain.com <http://bee-certain.com>

541-528-7800 15918 E. Alsea Hwy., Tidewater, Oregon 97390





Rex McIntire, and Gary Barnard!

Our featured speaker this month was George Hansen of Foothills Honey in Colton, Oregon. He led a discussion on winter preparation for our hives.

The speaker for October will be the “beekeepers beekeeper” Harry Vanderpool. Don’t miss this informative and entertaining speaker and get updated on the current state of beekeeping.

We will hold a candle making class in October at Kerry Haskins honey house. There are still a couple of spots available and you may sign up at our next membership meeting.

Our next membership meeting will be held on October 8th at 7:00. For more information about our meetings and events please visit our website at [portlandmetro.org](http://portlandmetro.org).

—Patty Anderson

### Portland Urban Beekeepers

Our September 2nd meeting was focused on practical advice from Dewey Caron on how to use this fall season to prepare our hives to overwinter. Additionally, Bill Catherall showed off the delightful video he composed for the OSBA State Fair booth, which put a spotlight various beekeepers in the area.

Glen Andresen, who Bill Catherall refers to as our “Beekeeper extraordinaire and master gardener” was back this month showing off his new inventive way to clean old diseased frames. He places his frames on his compost pile, where soldier fly larvae who rapidly eat through the wax. Soldier flies are attracted to anything high in organic matter. Glen exclaimed, “bring me your feces, your tired frames!”

Portland Urban would like to thank our friends at Bee Allies. Bee Allies provided us with a swarm hotline. The hotline was a success, with about 100 PUB members responding to over 300 calls.

We’re getting excited for some events coming up this fall and winter: At our November meeting, we’ll be hosting a Show & Tell where members and guests are encouraged to show off their products and share recipes. We will invite local companies to share what they are doing, and people can bring items to sell. Get your bee-related art projects ready to show at PUB’s December Photo and Art contest, complete with prizes. We’ll be having a potluck and honey tasting to complement the art. For more information about Portland Urban Beekeepers or to become a member, check out our new website at [PortlandUrbanBeekeepers.org](http://PortlandUrbanBeekeepers.org)!

—Courtney Todd Campbell

### Tualatin Valley Beekeepers

The Tualatin Valley Beekeepers Association (TVBA) meets monthly on the last Tuesdays in downtown Hillsboro. Monthly meetings include social and questions time from

6 to 6:30 PM, a 30 to 40 minute expert presentation on a beekeeping topic of value to club members, followed by a short business meeting and time to ask questions. Meetings take place at 225 S. First Ave. (at Washington) in Hillsboro. Free parking is available in the public garage above the first floor meeting rooms.

We had fun staffing a day of shifts at the OSBA booth at the State Fair and are happy to share information about bees and beekeeping wherever there is an invitation locally. We are developing a scholarship for club members to participate in the state Master Bee Keeping program, and are underwriting some members’ attendance to this year’s annual state conference.

Our October meeting will be on Oct 27 - meeting activity is presentation and conversation about honey judging and hive products. Please join us!

Tualatin Valley offers an active FaceBook page and local swarmcatcher list, and an annual Bee School in April. Benefits of membership include meeting and networking with a great group of active beekeepers, our monthly newsletter, monthly educational and social meetings, participation in an annual spring Nuc buy, a Bee Day in July, and access to the club’s honey extraction facility. Membership dues are \$20 per household per year.

Cheers.

—Debby Garman

## KEEPING BEES IN OCTOBER

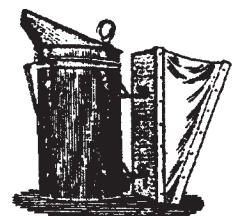
Harry Vanderpool

October is a very critical month for honeybees. Consolidation and profiling of the brood nest for winter should be mainly complete. As the month progresses, foraging opportunities are few and far in-between. Did the beekeeper do their job earlier on in the year with the assessment of stores? If not, drastic measures are in order that may or may not work to insure winter survival.

❖ The last syrup feedings in early October is the best time to include Fumigillan for Nosema control.

HEITKAMS’  
HONEY  
BEES

PAT, RUSSELL & CRAIG HEITKAM  
4700 FIRST AVENUE • ORLAND, CA 95963  
Bus. 530-865-9562 • FAX 530-865-7839  
Email: [heitkamsbees@hughes.net](mailto:heitkamsbees@hughes.net)



Queens, Bees, Honey & Pollination



❖ When returning to hives to pull miticide strips, beekeepers can mark hives with bright survey ribbon that feel light and give them a few more shots of syrup if weather permits. Feeding syrup too late in the season when temperatures are below 40°F can result in fermented honey in the feeders and frames. Dysentery often follows.

❖ Queenless hives can be combined or have nucleus hives installed. But special care must be taken to maintain the tight, consolidated brood nest and area above with stores.

❖ Late season sampling for mite levels, post treatment, give very good information on the efficacy of treatments used. Many beekeepers like to perform an oxalic acid dribble, or a “fall clean-up” later on in the year when the brood is at its lowest level. Sampling in October can help in the decision making of such measures.

❖ Mouse guards installed in hive entrances, are very cheap insurance for your very valuable comb. They are also a big part of an annual IPM for varroa control. What? Mouse guards as a method of varroa control? Mice that winter in honey bee hives often deface several frames of comb as they feed and make their nest. Such frames will be reconstructed by the bees in the coming year with very large areas of drone comb that will serve as varroa generators. Don't let it happen!

❖ While insulation of hives is not necessary in Oregon, many beekeepers install covers of various materials over the entire pallet of hives in order to shed rain and snow. This really helps with moisture control as well as helps preserve hive materials.

❖ Once you have done all that you can do for your bees, how about doing something for the beekeeper? Sign up for the Oregon State beekeepers Association Fall Conference. Do it now! A lot of very valuable information will be presented there that you just cannot afford to miss!

### 150TH OREGON STATE FAIR & 2015 ANNUAL OSBA CONFERENCE HONEY SHOWS

*Dewey M. Caron and Trevor Riches*

The 2015 State Fair Bee Booth was crowded into half the space that we had last year. Over 100 volunteers were on hand to interact and talk about bees with the fair goers, some doing more than one shift. A new highlight was a HIVideo produced by Todd and Trevor with expert editing by Bill Catherall. Seven bee Associations each volunteered to cover a day of the 11 day fair. The orsba.org website has some photos and a BIG THANK YOU to the volunteers. THANKS TO ALL WHO VOLUNTEERED.

CONGRATULATIONS to the winners of the State Fair Honey Competition. Rosette winners were Aliza Stapleton, Salem, of the youth Division (Extracted honey), Shelly Gowell for Extracted honey (a 2 blue ribbon winner), Mark Minzlaff, 1st for beeswax block, Judy Scher (Lane Co) for her chunk specialty honey entry (one of her two blues), Rob Dellenback for extracting frame, Esme Weil and Tyler Lazz for 1st place photos and for 1st in youth division photo Zirk Weil. Steve Coffman and Ciera Wilson were also blue ribbon winners. There were 45 total entries, more than double the previous year. Full listing on orsba.org

A JUDGING WORKSHOP, held in conjunction with the fair, by Dewey & Trevor, had 10 participants. Trevor also held a fair stewardship workshop during intake the weekend before the fair opened.

There will be another OR honey show at the Annual Conference, being held this year at the Oregon Gardens. Entries are due by Saturday 10 AM at the site, no preregistration is required. Judging will be of the same categories and judging standards as used at State Fair – you can find copy at: <http://oregonstatefair.org/wp-content/uploads/2015/06/2015-Honey-Products-of-the-Hive.pdf> There will include another judging workshop opportunity for judges with instruction by Dewey. Trevor Riches, reconstructed knees permitting, will again be show steward.



The  
**Weather Café®**  
by Rufus

Rufus' acclaimed & uniquely informative long-range forecasts go well with your morning beverage every Monday & Friday.

Grab a cup and become a proud patron of The Weather Café®.

► Click on **The WxCafé™**, top right corner of the **www.OVS.com** home page.

Plan ahead confidently . . . oh, by the way, it's **FREE!**

The Oregon Honey Festival, Oct 17th at the Ashland Springs Hotel in Ashland will have a great honey tasting opportunity and OR beekeepers are invited to send a jar of their honey for the tasting. WWW. OregonHoneyFestival.com Look for a future honey competition at this event.

**ON GETTING TO THAT (OSBA) CONFERENCE**

For those arriving for the conference who've not yet been to Oregon Garden—and/or who may choose to register on site, the first opportunity is Friday at the Oregon Garden, when activities and registration will be in the Orchid Room located in the Lorene Sails Higgins Building (noted as “1” on the



**UPCOMING EVENTS**

**October 1–3:** Western Apicultural Society Annual Conference. Boulder, Colorado. *Information:* <http://www.westernapiculturalsociety.org/category/2015-conference-news>.

**October 17:** Second annual Oregon Honey Festival, Ashland. (See ad, page 15.)

**November 6–8:** OSBA Fall Conference 2015, Oregon Garden, Silverton, Oregon. Tentative Agenda, page 7; Registration, page 6 and <http://osba2015.orsba.org> (which includes additional information and updates). Consider registering early to not only save on cost but also help conference planners!

**November 17–19:** California State Beekeepers Association Annual Convention. Hilton Sacramento Arden West., Sacramento, California. *Information:* [www.californiastatebeekeepers.com/events.html](http://www.californiastatebeekeepers.com/events.html).

**January 5–9, 2016:** American Beekeeping Federation Conference & Tradeshow. Sawgrass Marriott Golf Resort & Spa, Ponte Vedra Beach (Jacksonville) Florida. *Information:* <http://abfconference.com>.

**January 5–9, 2016:** American Honey Producers Annual Convention & Trade Show, Albuquerque Embassy Suites, Albuquerque, New Mexico. *Information:* [www.ahpanet.com](http://www.ahpanet.com).

**FOOTHILLS HONEY**

Honey and  
Crop Pollination

George and Susan Hansen  
30576 Oswalt Rd  
Colton, Oregon 97017

(503) 824-2265  
[www.foothillshoney.com](http://www.foothillshoney.com)

*Everything for the Beekeeper*

Call our branch offices: Jeff in Fresno or John in Chico for fast courteous service. *Free Full Color Catalog*

**PO Box 2837  
2765 South Golden  
State Blvd.  
Fresno, CA 93745  
Phone (559) 495-0230  
Fax (559) 495-0232  
Toll Free 1-877-432-3268**

**15 C Valley Court  
Chico, CA 95973  
Phone (530) 893-0921  
Fax (530) 893-0922  
Toll Free 1-877-332-3268**

**Website:  
[www.dadant.com](http://www.dadant.com)**

map). If planning to arrive on Saturday or Sunday, check in/registration will be in the J. Frank Schmidt Pavilion Jr. (noted as “3”).

The “2” on the map is the Natural Resources Education Center, where the Bee School and the Mead Workshop are scheduled for Saturday and Sunday, respectively. A full version of the map is available online at: [www.mappery.com/map-of-Oregon-Garden-Map](http://www.mappery.com/map-of-Oregon-Garden-Map).

**PENDELL'S CORDOVAN ITALIAN QUEENS**

Ph: (530) 963-3062

Mite Resistance

Gentle

Honey Producers

VSH Trait

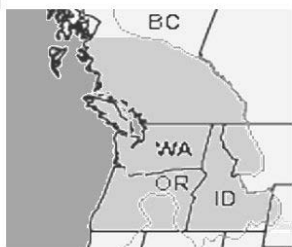
Isolated Mating Yard

Hygienic

Frank & Sheri Pendell  
Fouts Spring Rd  
P.O. Box 40  
Stonyford, CA 95979

Orders only: 877-963-3062  
Fax: (530) 963-3063  
[fpendell@stonyford.com](mailto:fpendell@stonyford.com)  
[www.pendellapiaries.com](http://www.pendellapiaries.com)

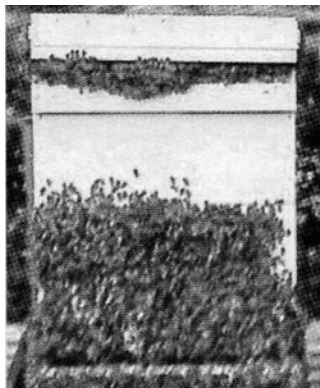




Welcome to Cascadia  
Our Neck Of The Woods

Get Current Beekeeping News,  
Videos, Tutorials and  
Legislative Coverage for the  
Pacific Northwest

[WRBO.org](http://WRBO.org) Western Regional Beekeeping Observer



Dave's Bee-Licious Honey  
Raw Honey & Bee Pollen

Dave Muralt  
Beekeeper

7546 SW Joshua Pl  
Gaston, OR 97119  
Pleasant words are like Honeycomb  
Sweetness to the Soul Proverbs 16:24  
Cell: 503-201-9775  
dtmuralt@gmail.com

# Bee Culture

The Magazine of American Beekeeping

## 12 BIG ISSUES

### 1 Beekeeping Calendar

All for \$25/Year

Sign Up Online At [www.BeeCulture.com](http://www.BeeCulture.com)  
or call 800.289.7668, Ext. 3220

## Oregon Honey Festival

Saturday, Oct. 17, 2015

Taste the Terroir of Honey

Honey Bee Science, Speakers, Tasting,  
Demos, LIVE Music!

Ashland Springs Hotel  
[www.OregonHoneyFestival.com](http://www.OregonHoneyFestival.com)  
LIKE us on FaceBook

# RUHL BEE SUPPLY

### Honey Bees & Hives

- Langstroth 8 & 10
- Ruhl Long Hive
- Top Bar
- Warré

### Clothing & Tools

### Medicine & Nutrition

### Honey Harvesting

### Bottling & Labeling

### Queen Rearing

### Mason Bees & Nests

### Local Raw Honey

### Local Beeswax

### Candle Crafts

### Soapmaking & Gifts

### Books & Classes

### Experienced Staff

### BEE GARDEN

### SEEDS



Introducing  
Our New Exclusive Jacket!

- Natural Cotton
- Brass Zippers
- Double Velcro Closures
- Thumb Straps

\$59

XXS - 4XL



17845 SE 82nd Dr  
Gladstone, Oregon  
97027

503 657 5399

[www.ruhlbee.com](http://www.ruhlbee.com)



*The Bee Line*

Newsletter of the Oregon State Beekeepers Association  
4207 SE Woodstock Blvd Ste 517  
Portland OR 97206

NONPROFIT ORG  
US POSTAGE  
PAID  
PORTLAND OR  
PERMIT NO. 2358

~ **Reminder:** The date on the mailing label is the expiration date for membership. ~  
If the date is October 2015 (or earlier), this is your friendly renewal notice.

***The Bee Line***

*The Bee Line* is the official publication of the Oregon State Beekeepers Association. Annual subscriptions to the newsletter are included with each membership in OSBA.

Please send news about your bees and your experiences in keeping them, as well as events, corrections, comments, questions, photographs and stories, interviews, recipes, points of view—and ads/advertising—to: Rosanna Mattingly, *The Bee Line*, 4207 SE Woodstock Blvd Ste 517, Portland OR 97206; e-mail: [osba.newsletter@gmail.com](mailto:osba.newsletter@gmail.com). It's your newsletter—we do want to hear from you!

The next issue to be printed will be the November–December issue, 2015. The deadline for submitting copy is November 10, 2015. Please let me know if you find difficulties with the deadline so we can work out the space and timing for the material.

*Thank you!*

**Advertising**

**Per Issue**

**Event Listing**

All events, space permitting (15 words) **Free**

**For a nonprofit-group event**, an additional 30 words (total of 45) in the listing or an article **Free**

**Business Ad**

Business card	\$10.00
Quarter page	\$25.00
Half page	\$50.00
Full page	\$100.00

**Classified Ad (30 words)**

Members	\$3.00
Nonmembers	\$5.00

This issue of *The Bee Line* is printed on recycled paper by Minuteman Press Powell; 503.234.2040.