

The Bee Line

Newsletter of the Oregon State Beekeepers Association

Volume 37, Number 8

September 2012



Jan Lohman

IN THIS ISSUE...

Safety First	1
President's Message	2
Board Meeting Minutes	3
OSBA Resources	4
Regional News	5
Keeping Bees	7
Question of the Month	7
Membership	8
National Honey Month	9
Classified Ad	11
Conference Auctions	11
Conference Registration	12
Conference Info	13
Magazine Subscriptions	14
OSBA Membership Form	15

Image above: With planning for the Journey level of the Master Beekeeper program in the works, an early August field day included Morris Ostrofsky doing a hive inspection typical of what will be required at this next level of the program. Here he waits as Dewey Caron provides results of the process. The Journey level is to be introduced at the fall conference, just about a year since introduction of the Apprentice level.

OSBA WEBSITE: www.orsba.org
WEBKEEPER: Thom Trusewicz
ccbees@gmail.com

Oregon State Beekeepers Association GUIDELINES FOR BEEKEEPING

The Oregon State Beekeepers Association has established the following set of guidelines that promote and support the beekeeping industry and the general public. It is hoped that members will take an interest in and adhere to these guidelines. Beekeepers should ensure that each of the following priorities are addressed in the order listed.

Outline of Priorities

Safety Is First

Public and beekeeper safety is a top priority. This includes, but is not limited to:

- ❖ Care in hive transport and placement
- ❖ Keeping vehicles and machinery fit for use
- ❖ Ensuring employee safety management
- ❖ Focusing on product safety
- ❖ Maintaining the health of colonies
- ❖ Training for new beekeepers

Quality Is Second

Quality standards affect the public, beekeepers, and the industry. They include, but are not limited to:

- ❖ Attending to strength and suitability of hives for pollination
- ❖ Keeping hive products to standards consistent with local ordinance(s)
- ❖ Maintaining the health of colonies
- ❖ Training for new beekeepers
- ❖ Providing a quality work experience for employees
- ❖ Being thoughtful in interactions with and having consideration for fellow beekeepers
- ❖ Keeping conduct and behavior professional while operating as a beekeeper

Production Is Third

Once the safety and quality issues have been thoroughly addressed, beekeepers are in a good position for healthy and productive business.

Note: As we are reminded here, care for honey bees extends well beyond the bees, thus involving all who contribute to their management as well as the colonies belonging to other bees, their keepers, and the people in the path of the beeline and migrating colonies. The OSBA guidelines are a reminder of safety concerns, and consideration of guidelines prepared by others for beekeeping at different scales is also encouraged.

MESSAGE FROM THE PRESIDENT

This was another busy month for bees and beekeepers with bees returning from Central Oregon. For us at Vazza Farms, we are getting them souped up and ready for one more move into the buckwheat for some fall buildup. We frequently wonder where exactly has the time gone. Our lives as beekeepers are filled with blocks of time of where the bees are located, and we gauge our lives by where we were last and where we are going next. I have not yet learned to “get off the roller coaster ride” and slow down unless something forces the issue.

Well, my kids coming to visit does force the issue (in a really good way), and we had the pleasure of having my daughter and family visiting for two weeks in July. We (even Vince) floated the Boise River in 100-degree weather and enjoyed every minute of it, and the kids, grandkids, and I went up to check out a recreational area at Skibowl for a zipline experience, bungee jump, Indy cars and ski lifts, and the luge! Let it be noted that Grandma did NOT zipline, but I did ride the ski lift and the luge twice (you think that beekeeping is hard on your back!). We even got the kids out to help pull honey in the bees.



Jan's grandkids Alex and Allison, daughter Tammy, and son-in-law Ross with Mt. Hood in background.

Well, back to reality. On August 4, the Oregon Master Beekeeper Program had its first annual field day with our committee members, instructors, and mentors, with a visit from Dr. Michael Burgett. We held it at Oak Creek this year. It is such a charming location with all types of beehives to observe and Dr. Burgett to explain to members the types of hives and how they came to be there. During the day, we held discussions on how we can improve the program, what is going well, what needs to be altered, and where we are going from here. Carolyn Breece gave out certificates to beekeepers who have earned their Apprentice level certification, and Dr. Dewey Caron did a mock test with Morris Ostrofsky as the testee for his Practical Journey Test so other participants would know what to expect next year when we will be testing at the Journey level of the program. There will be more about the program at our conference in November.

Speaking of the conference, there will be plenty to educate, plenty to amuse, and plenty to discuss, so please get your registration form in early to our treasurer, Paul Kowash, and mark your calendar for November 1 through 3 in Seaside at the Seaside Convention Center. Also—I talked with Deb Morgan this week and Bob is back at work, and they want to thank everyone for their prayers and concerns.

Jan



*Everything
for the Beekeeper*

Call our branch offices: Pat in Fresno or John in Chico
for fast courteous service. *Free Full Color Catalog*

PO Box 2837
2765 South Golden
State Blvd.
Fresno, CA 93745
Phone (559) 495-0230
Fax (559) 495-0232
Toll Free 1-877-432-3268



15 C Valley Court
Chico, CA 95973
Phone (530) 893-0921
Fax (530) 893-0922
Toll Free 1-877-332-3268

Website:
www.dadant.com

Bee Culture

THE MAGAZINE OF AMERICAN BEEKEEPING

Don't Miss Even One Exciting Issue of *Bee Culture* Take Advantage of This Association Discount!

Magazine filled with everything you want to know about:

- Bees • Beekeeping • Beekeepers •
- How-To's • Honey Report • Profiles • Recipes •
- Funny Stories • Research • Something For Everybody •

Send check to: **Bee Culture Magazine**
623 W. Liberty, Medina, OH 44256 or call
800-289-7668, Ext. 3220 with credit card



OSBA BOARD MEETING MINUTES

August 4, 2012 ❖ Corvallis, Oregon

Attendees: Paul Kowash, Kenny Williams, Tim Wessels, Richard Farrier, Terry Fullan, Dewey Caron, Robert Allen, Kathy Kowash, Chuck Sowers, Del Barber, Judy Scher, Linda Zielinski, Myrna Barber, Paul Andersen, Jan Lohman, Carolyn Breece

President Jan Lohman called the meeting to order at 4:40 PM.

Minutes

The minutes of the April Executive Board Meeting were read by Carolyn Breece, secretary. Chuck Sowers motioned to accept the minutes as printed in the *The Bee Line*, and Del Barber seconded the motion. The board unanimously approved.

Treasurer's Report

Paul Kowash provided an update to the OSBA finances. Funds received and paid for the extension publication, "How to Reduce Bee Poisoning from Pesticides," are reflected in the treasurer's report. Donations received from California, Idaho, and Washington State Beekeepers Associations were listed. The OSBA contributed \$3,500. A total of \$12,500 was submitted to Oregon State University for authors' salaries (Louisa Hooven and Linda Brewer), printing, and publication of the booklets. Each member of all contributing beekeeper associations will receive a hard copy of the publication. We thank California, Idaho, and Washington for their contributions and look forward to an informative publication. Paul has already received a few 2012 fall conference registrations.

Robert Allen motioned to accept the treasurer's report, and Richard Farrier seconded the motion. The board unanimously approved.

The Bee Line

Rosanna Mattingly, editor, was unable to attend, but she sends her appreciation to those who have submitted articles for publication in *The Bee Line*. The board discussed an issue regarding advertising in *The Bee Line*. Nonprofit and For-Profit organizations may submit an event notice free of charge of up to 15 words. Nonprofit organizations may also write and submit an additional 30 words about their event to *The Bee Line* for free. (*This decision is written as altered with*

email voting after the meeting to better serve the needs of the newsletter.) Paul Kowash motioned to accept this advertising policy. Judy Scher seconded the motion. The board unanimously approved.

Regional Representative and Association Reports

Tualatin Valley Beekeepers Association: TVBA Secretary Paul Andersen announced a change in dates for the TVBA monthly meetings. TVBA will now meet on the last Tuesday of each month, starting in September [now set for October]. TVBA participated in a honey bee event at the Oregon Zoo. They had a well-cared-for observation hive on display, and the event was a success.

Linn-Benton Beekeepers Association: LBBA President Linda Zielinski reported that 150 people are on the "Bee Friendly" list for LBBA. They have a new newsletter. The LBBA participated in da Vinci Days, a science and technology festival in Corvallis. They displayed an observation hive and had ten different honey varieties for people to taste.

Lane County Beekeepers Association: President Judy Scher reports that LCBA has 230 members, with 70 regularly attending meetings. The Lane County Fair is approaching, and they are working on getting more entries into the honey show. LCBA is also working on updating their website.

South Coast: Representative Del Barber reports a good honey flow. Blackberries and pennyroyal are still going strong and will likely continue into mid-September. The Curry County association will soon submit their request to become an official OSBA branch association.

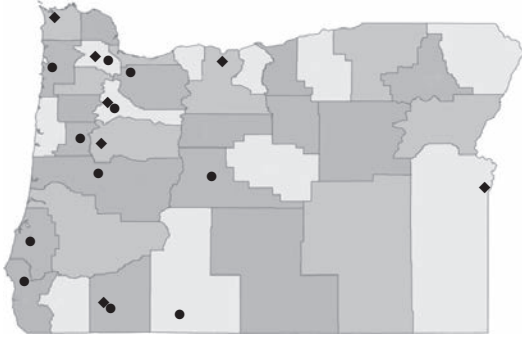
Tillamook County Beekeepers Association: President Robert Allen reported a few members in the club have experienced allergic reactions to bees. There are a few regular members in the club. Bees are not doing great this year.

North Coast: Representative Terry Fullan said the Xerces Society gave a presentation at a recent Tillamook County club meeting. It was a great meeting, and they learned about plants for native pollinators. Terry described the club as a good, stable group with cheerful, unique members.

Willamette Valley Beekeepers Association: President Richard Farrier was happy to announce that club members Fred VanNatta and Fran Luschenko have placed a honey bee colony at the governor's

Continued on page 10

Oregon State Beekeepers Association EXECUTIVE BOARD AND ASSOCIATIONS



OSBA OFFICERS

President: Jan Lohman
77225 Colonel Jordan Rd, Hermiston 97838
541.567.3209; 541.980.0304 (cell);
vazzafarms@yahoo.com

Vice President: Paul Andersen
19255 SW Prospect St, Aloha 97007
503.649.5089; 503.332.5410 (cell);
paulande@easystreet.net

Secretary: Carolyn Breece
743 NW 18th St, Corvallis 97330
541.207.3668;
carolyn_breece@yahoo.com

Treasurer: Paul Kowash
5959 SW Taylors Ferry Rd, Portland 97219
503.452.2664; 503.367.5242 (cell);
paulkowash@aol.com

Past President: Chuck Sowers
26730 S Hwy 170, Canby 97013
503.266.1740; sowers@canby.com

♦ OSBA REGIONAL REPRESENTATIVES

North Coast: Terry Fullan
39450 Northfork Rd, Nehalem 97131
503.368.7160; tfullan@nehalem.tel.net

South Coast: Del Barber
PO Box 31, Ophir 97464
541.249.0160; mydedocs@charter.net

Columbia Basin: Bill Edwards
5040 Lost Lake Rd, Hood River 97031
541.354.2223

Eastern Oregon: Jordan Dimock
2635 Mitchell Butte Rd, Nyssa 97913
541.372.2726

Portland Metro: Todd Balsiger
3284 Edgeview Ln, Forest Grove OR 97116
503.523.9572; toddbalsiger@comcast.net

Southern Oregon: Floyd Pawlowski
415 Pompadour Dr, Ashland 97520
541.482.4797; fmpawlowski@ashlandwireless.net

North Willamette Valley: Harry Vanderpool
7128 Skyline Rd S, Salem 97306
503.399.3675; shallotman@yahoo.com

South Willamette Valley: Jason Rowan
80881 Turkey Run Rd, Creswell 97426
541.942.6479; beetanical@q.com

♦ OSBA REGIONAL ASSOCIATIONS

Central Oregon Beekeepers
Meets 6:30 PM, third Tuesday
63211 Service Rd, Suite 130, Bend
President: Bindy Beck-Meyer
Treasurer: Allen Engle
For information, please contact John Connelly—
johncobka@gmail.com

Coos County Beekeepers
Meets 6:30 PM, third Saturday (except December)
Ohlsen Baxter Bldg, 631 Alder St, Myrtle Point
President: John Gardner—541.572.3847
Vice President: Shigeo Oku—541.396.4016
Secretary: Bobbi Gardner—541.572.3847
Treasurer: Jane Oku—541.396.4016;
janeoku1958@gmail.com

Klamath Basin Beekeepers
Meets 9:00 AM, last Saturday (except Nov/Dec)
OSU Extension, 3328 Vandenberg Rd, Klamath Falls
President: Tom Chester—541.850.8384; tlc1@well.com
Vice President: Chris Kerns—541.884.8664;
ker664@charter.net
Secretary: Donna Schmerbach—541.891.3066
Treasurer: Kathy Nelson—541.882.3141
Website: www.klamathbeekeepers.org

Lane County Beekeepers
Meets 7:30 PM, third Tuesday, Trinity United
Methodist Church, 440 Maxwell Rd, Eugene
President: Judy Scher—541.344.2114;
judyscher@gmail.com
Vice President: Rita Ostrofsky—541.685.2875
Secretary: Barbara Bajec—541.767.9086
Treasurer: Nancy Ograin—541.935.7065;
woodrt@pacinfo.com
Website: www.lcbaor.org

Linn-Benton Beekeepers

Meets 6:30 PM, fourth Wednesday, South First
Alternative Co-op Meeting Room, 1007 SE 3rd, Corvallis
President: Linda Zielinski—541.929.4856;
llz50@peak.org
Vice President: Zach Welch—541.754.3069;
zw@superlucidity.net
Secretary: Marie Laper—541.760.9838; mlaper@peak.org
Treasurer: Suzi Maresh—541.967.9607;
sjomaresh@msn.com

Portland Metro Beekeepers

Meets 7:00 PM, second Thursday, Clackamas Community
College, Clairmont Hall, Room 118, Oregon City
President: Nancy McFarlane—503.260.3930;
mcfarlanebees@gmail.com
Vice President: Jim Barlean—503.659.9718;
jbarlean@msn.com
Secretary: Kat Yeager—503.452.5010;
peace.is.purple@gmail.com
Treasurer: Rex McIntire—503.720.7958;
remcintire_5@msn.com

Southern Oregon Beekeepers

Meets 7:30 PM, first Monday, Southern Oregon
Res & Ext Ctr, 569 Hanley Rd, Central Point
President: John Jacob—541.582.BEES
john@oldsolenterprises.com
Vice President: Floyd Pawlowski—541.482.4797;
fmpawlowski@ashlandwireless.net
Secretary: Michele Bashaw—541.512.0155;
hapistitch@earthlink.net
Treasurer: Ron Willing—541.582.9694;
rwilling@charter.net

Tillamook County Beekeepers

Meets 7:00 PM, second Tuesday, Art Space
Hwy 101 & 5th St, Bay City
President: Bob Allen—503.322.3819
Vice President: Terry Fullan—503.368.7160;
tfullan@nehalem.tel.net

Tualatin Valley Beekeepers

Meets 7:30 pm, last Friday [will change in October]
Cameron Public Svcs Bldg, 155 N First Ave, Hillsboro
President: Mike Van Dyke—503.642.5338;
mvand581@gmail.com
Vice President: Andrew Schwab—503.538.7545;
beesbuzzin@gmail.com
Secretary: Paul Andersen—503.649.5089;
paulande@easystreet.net
Treasurer: Jerry Maasdam—503.648.7906;
jmaasdam@mac.com

Willamette Valley Beekeepers

Meets 7:00 PM, fourth Monday, Chemeketa
Community College, Building 34, Room A, Salem
President: Richard Farrier—541.327.2673

Vice President: Harry Vanderpool—503.399.3675;
shallotman@yahoo.com
Secretary: Mike Rodia—503.364.3275; drodia@yahoo.com
Treasurer: Patricia Swenson—pkswenson@gmail.com
Website: www.wvbatoday.com

COMMITTEES

Agriculture Liaison: Harry Vanderpool—503.399.3675
Fairs and Exhibits: Marjie Ehry—503.434.1894
Nominations: Chuck Sowers—503.266.1740
NW Apiculture Fund for Honey Bee Research, Extension,
and Education: Kenny Williams—541.456.2631
Public Relations: Paul Andersen—503.332.5410

HONEY BEE RESEARCH

Dr. Dewey Caron—302.353.9914 (April–October);
carond@hort.oregonstate.edu
Dr. Lynn Royce—541.929.5337; mitebee@peak.org
Dr. Ramesh Sagili—541.737.5460;
sagilir@hort.oregonstate.edu

REGIONAL NEWS**Regional Representatives****South Coast**

The South Coast continues to have two local associations. Coos County Beekeepers are providing encouragement and support to their new sister organization, Oregon South Coast Beekeepers Association, located in Curry County. Carla Fletcher, vice president of the Oregon South Coast Beekeepers Association in Curry invited Catherine Dunn and Kristina Bennett from the USDA Forest Service to offer a guided presentation for the identification of plant specimens. Members brought samples of ocean spray, hairy manzanita, angelica, and bent knee. Catherine introduced her presentation by challenging the group to classify angelica. She led a PowerPoint presentation and discussion with pictures of native flowers and pointed out their identifying characteristics. Members benefitted and appreciated the knowledge gained. The Coos County Beekeepers Association members were delighted to be the proud recipients of the Grand Champion ribbon for their display at the Coos County Fair. The display presented snapshots of the fair over the past 100 years. The first fairs were Coos and Curry counties together. Maybe they are still working together, because the fairs were held at the same time this year. Ten members worked to design and construct the booth, and fourteen members worked the booth to promote beekeeping, answer questions, help with honey tasting, and show off the display box hive

(thank you, President John Gardner). Jane and Shigeo Oku continue to organize and oversee this important community event and are sincerely appreciated by the organization. Members from both organizations: Del Barber, Shigeo Oku, Bruce Mac Donald, and Myrna Barber, represented the south coast at the Oregon Master Beekeeper meeting in Corvallis. They send a special thank you to the Oregon State Beekeepers Association for the sessions on safety reminders. Do you know where your EpiPens are and how to use them? As for the bees, swarms are still being captured, and the month of July continues our honey flow with the blackberry bloom. —*Del Barber*

South Willamette Valley

September. The season has flown by and winter is coming. Weather for August here in the south valley seems to be holding, with cool morning and hot afternoons. Here in our operation, we are still pulling and extracting honey with the end of the season always in consideration. I hope the honey flow came for all of you and you are satisfied with your colonies' health. In September, make sure you get your mites down and out, check and feed for stores, Nosema?, and watch for robbing. Here in the south valley, flows will be done for the most part so take care when examining your hive. Work with a purpose and get in and out. Happy Keeping. —*Jason Rowan*

Regional Associations

Portland Metro Beekeepers

The Portland Metro Beekeepers Association (PMBA) held their annual picnic at the Molalla River State Park


on Saturday, August 11. A beautiful day with wonderful friends. There are great cooks in this club and folks who are married to great cooks! In our traditional spot overlooking the Willamette River, we enjoyed a cool breeze, shade, and sunshine. Our most valued part of the picnic is the varied discussion on beekeeping, extracting, fall preparation, etc. Everywhere you walked around the area was a different and equally riveting conversation on beekeeping. It is a day to be cherished.

A newsworthy item: the PMBA is discussing a name change for the club. With the newly formed chapter, Portland Urban Beekeepers, it may be confusing to a new beekeeper who explores the www.orsba.org website to find two "Portland" groups. We are thrilled there will be an urban presence in the Oregon State Beekeepers Association. The PMBA has always (according to my historians) met in the southern reaches of the metro area. The PMBA membership will be discussing this thoroughly in September with a decision to be conducted per our bylaws.

—*Nancy McFarlane*

Tillamook County Beekeepers

We welcomed four new beekeepers during our August meeting. Eighteen club members shared plans for fall treatments and gave reports on the beginnings of mid-August honey harvest. Bob Allen explained winter hive configurations. Still we have thistle and knotweed in bloom, which provide a late nectar flow leading to a unique dark honey. Bumper crops of blackberries and blueberries are ripening right now—come to the Coast and enjoy the bounty! —*Terry Fullan*



Honey and
Crop Pollination

George and Susan Hansen
30576 Oswalt Rd
Colton, Oregon 97017

(503) 824-2265
www.foothillshoney.com

DONATIONS TO THE NORTHWEST APICULTURE FUND FOR HONEY BEE RESEARCH, EXTENSION, AND EDUCATION

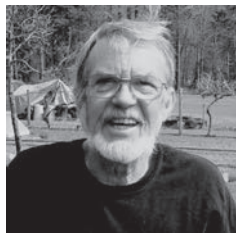
- ❖ Make your check out to: **OSU FOUNDATION**
- ❖ On the memo line, take care to write: **THE NORTHWEST APICULTURE FUND FOR HONEY BEE RESEARCH, EXTENSION, AND EDUCATION**
- ❖ Mail to: Oregon State University Foundation at 850 SW 35th St, Corvallis OR 97333-4015

If you have any questions regarding details of the fund or how to donate, please contact Kenny Williams, Chair of the OSBA's Endowment Fund, at 541.456.2631.

IMPORTANT: Making your check out only as described above ensures that your donation is correctly applied to the appropriate Endowment and not to any other program.

KEEPING BEES IN SEPTEMBER

Ken Ograin



September is a month when one needs to be observant. August, you were busy with honey harvesting, mite control, and inspecting colonies.

❖ Honey frames need to be protected from wax moth. Your honey supers should be cleaned and stored for next year's honey flow.

❖ Things you need to be mindful of are winter food stores, robbing, yellow jackets, and *Nosema* treatment; also, get your bee yards tidied up.

❖ Keep hefting your hives to monitor food stores. Your colonies will be consuming more food than is being brought in. Feed heavy syrup if needed in a top feeder or inside feeder at this time, as entrance feeders tend to attract robbers.

❖ Robbing and yellow jackets can and may be a major problem this month. Entrance reducers will help, but the UC Davis robber screen that Dewey brought to our attention last fall is a good thing. The screens are easy to make using just scrap wood and 1/8-inch hardware cloth. I made many of these last year, and they do an excellent job of deterring robbers.

❖ Monitor for mites, and be sure that you have followed manufacturer's instructions for any products that you may have used. Be sure to remove any unused product in a timely manner.

❖ If you did any requeening or combining of weak colonies last month, be sure to check them. All colonies need to be queenright with a healthy population of winter bees that will carry the colony through winter.

❖ If your colony did not produce any surplus honey but seems to have a large population of bees and is queenright, Tom Seeley may have the answer for you. One, if your colony had swarmed, then your population may have not recovered in time for the major nectar flow. Another possibility, Tom says, is *Nosema* or tracheal mites as both of these can reduce a bee's life span—and it is the foraging phase that will be shortened. This would be a good reason to test your bees for both so that you can treat them while there is still time—that is, before winter temperatures will prevent your ability to do so.

❖ Hives need to be protected from winter rains and

winds. Be sure you have good-fitting lids, and weight them down. Tip hives up slightly in the back if you use solid bottom boards.

❖ Don't forget about mouse guards. It will not be long before daytime and nighttime temperatures will be getting down, forcing bees to cluster for long periods.

QUESTION OF THE MONTH

Question

When approaching my colony, I see pollen collectors bringing back pollen at the hive entrance. Can I conclude that my colony is queenright so I don't need to check? I heard bees need a stimulus to collect pollen and that is "open" brood. If that's correct, how can it be explained that queenless colonies I find in the summer and fall (or whenever there seems to be a lot of pollen available) have frames filled with pollen and honey in the brood chamber after the brood has hatched out?

Response

Dewey Caron: NO, we cannot be certain a colony is queenright if we see pollen being brought in. While it is true that open brood is a stimulus to collect pollen in the spring, decreasing day length in the fall is another stimulus. Shorter days also stimulate pollen collection (for the winter stores)!

The absence of pollen collection may indeed be an indication of a queenless condition, but it may also be indicative of decreasing brood or poor pollen collection conditions. Thus, seeing little pollen collection during the summer, when brood may indeed be present, could be due to environmental conditions (few flowers producing pollen). Often during a good nectar flow, we see little pollen collection with brood present.

HEITKAMS' HONEY BEES

PAT, RUSSELL & CRAIG HEITKAM
4700 FIRST AVENUE • ORLAND, CA 95963
Bus. 530-865-9562 • Fax 530-865-7839
Email: heitkamsbees@hughes.net



Queens, Bees, Honey & Pollination

The statement that presence of pollen collectors entering a colony indicates a queenright condition usually applies to spring better than to either summer or fall colonies. Often “we” are guilty of not providing the “exceptions to the rule.”

Corinne Earls
Daniel Fuller
John Gesler
Mindy Hamilton
Paul Hardzinski
MJ Hull
Rebecca Lewis
Art Martinak

Michael Meador
Dirk Olsen
Ken Peterson
Martina Phillips
Jamie & Jayme Shouse
Eric Walls
Johann Ward
Brian Wilber

WELCOME, NEW & RENEWING MEMBERS!

Woody Bailey
Aggie Blackmer

David Curtis
Vincent Digiano



**Biggest Beekeeping Store
in the Northwest**

**Full Line Beekeeping Supplies
Northwest Hive Kits
On-Site Manufacturing
Beekeepers on Staff
Comprehensive Classes
Consulting & Support
Worldwide Shipping
Hobbyist to Commercial
Local Raw Honey & Beeswax**

www.ruhlbeesupply.com
17845 SE 82nd Drive
Gladstone, Oregon 97027
503 657 5399



SUMMER and FALL QUEENS

PENDELL'S CORDOVAN ITALIAN QUEENS

Ph: (530) 963-3062

Mite
Resistance

Gentle

Honey
Producers

VSH Trait

Isolated
Mating
Yard

Hygienic



Frank & Sheri Pendell
Fouts Spring Rd
P.O. Box 40
Stonyford, CA 95979

Call for pricing.

Orders only: 877-963-3062
Fax: (530) 963-3063
fpendell@stonyford.com

NATIONAL HONEY MONTH

Dewey M. Caron

September is National Honey Month, a great time to enjoy the tastes and variety of Oregon honey. It is also a good opportunity to clarify a popular myth about honey, according to the National Honey Board, a research and promotion board under USDA oversight that conducts research, marketing, and promotion programs to help maintain and expand markets for honey and honey products. Their programs are funded by an assessment of one cent per pound on domestic and imported honey.

“Lately, there has been some confusion about honey and honey filtration,” said Bruce Boynton, CEO of the National Honey Board. “The truth is that honey is made by honey bees from the nectar of flowers and plants...” There are more than 300 floral varieties of honey, ranging greatly in flavor and appearance.

Honey is nectar processed by the bees. It is a whole food that has naturally occurring nutrients due to its single ingredient: honey. Honey may or may not contain pollen, a second plant product collected by honey bees for their diet. As beekeepers collect honey from managed beehives, pollen often ends up in the honey removed from the beeswax comb cells, a process termed extraction.

Most locally harvested honey contains pollen grains from the nectar source which can be used to verify the plant source. Consumers purchase local honey at farm markets, local fairs, or roadside stands, or buy directly from neighboring artisan beekeepers. Some consumers specifically seek locally made products for the medicinal value attached to honey. Others believe local source honey provides potential allergy relief.

To obtain a consistent quality honey for the consumer, honey is warmed to force it through a filter which removes foreign material from the liquid, often including whatever pollens may have been introduced during the extraction process. Jill Clark, vice president of Sales and Marketing for Dutch Gold Honey, a 66-year-old family owned and operated business based in Lancaster, Pennsylvania, explained honey processing in a recent National Honey Board release. “The filtration process that we use is a tried and true method that’s been used in the industry for more than 50 years.... We warm the honey so it flows smoothly through our filters. Our filter press looks like a large accordion with many paper filters along the way.... This removes the foreign material or the pollen and any residue from the beehive, so that by the time it’s

through the filter papers, the honey is clear and ready for bottling.”

In addition to promotion of honey in the diet, the National Honey Board funds important research on honey. Dr. Ian M. Paul, Pennsylvania State University, Hershey Medical Center, was the lead researcher of Board-funded study on honey as an effective natural cough suppressant. “I was looking to find an alternative that would be just as good as the over-the-counter dextromethorphan. I was surprised when we looked at the study results that the honey did the best in the comparison of the honey, the dextromethorphan and no treatment.” Honey is recommended by the American Academy of Pediatrics and the World Health Organization on use of honey as a natural cough suppressant in children over the age of one.

So, however you prefer honey, local or processed, specific floral source or wildflower (mixed floral sources), in the beeswax comb as bees store it or extracted by your local beekeeper, September is an ideal month to enjoy when beekeepers have the greatest variety of current season product. Honey is a Natural—good for us and our health. The National Honey Board has a press kit for individuals interested in working with local media outlets to publicize and promote honey.

“Breeder and Shipper of Northern California Italian Queens” Wooten’s Golden Queens, Inc.

“BEST TO THE BEST”

2012 Price List For Italian Queens

Queens	Spring-Summer
1 to 9	\$22.00
10 to 24	\$19.75
25 to 49	\$18.50
50 or more	\$18.00

For several years, Marla Spivak has had a vision of helping queen producers select breeder stock to be more tolerant of bee viruses, varroa mites, and nosema disease. The Bee Informed Partnership project was formed, Katie, Rob, and Mike, “The Bee Tech Team” gathers data from our bees. This information will help us select breeder stock that may be more tolerant of bee viruses. This is a long term program that will continue to implement a system that will help keep track of disease and parasite at colony levels. Our beekeeping family’s mission is to make the better always the BEST!

Phone: 530-549-3555
Toll Free: 888-565-8439
11189 Deschutes Road
Palo Cedro, CA 96073
www.wootensgoldenqueens.com

Minutes—Continued from page 3

mansion! The colony has a new queen and very gentle bees. Honey proceeds will go to a children's charity. The Willamette Valley group has about 60–100 people attending the meetings. Group members involved in the Oregon Master Beekeeper Program are busy with educational events, including queen rearing.

Portland Urban Beekeepers

Tim Wessels will soon submit a request for the Portland Urban group to become an OSBA branch association. The club currently has about 100 members, with about 40 attending meetings regularly. The meetings are held on the first Wednesday of the month from 6:30 to 8:30 PM at Calaroga Terrace in Portland.

Amitraz Strips

George Hansen went to Washington to meet with the EPA in an attempt to get Amitraz strips approved for use in the US. The Oregon Department of Agriculture will have a Section 18 prepared for Oregon at the end of the month (August). Then, we will wait for approval by the EPA. Almond and cherry growers and Ramesh Sagili will be asked to write letters to the Oregon Department of Agriculture in support of the use of Amitraz for Varroa mite control. Jeff Pettis (USDA) is

conducting research on Amitraz currently to update data for the EPA.

Membership Dates

The board discussed the option of having members renew memberships during a specific time of year; however, we decided to leave the membership dates as-is. New members and renewals can be submitted at any time of year. Paul and Kathy Kowash will continue to send reminders to lapsed members.

4-H

OSBA is donating awards to 4-H winners at county fairs and the Oregon State Fair. Next year, we would like to offer OSBA t-shirts as the award!

2012 Fall Conference

The OSBA fall conference will be on November 1, 2, and 3, 2012, in Seaside, Oregon. Please see the OSBA website [www.orsba.org] for registration information. We designated committees for the event. The silent auction will be run by Deb Morgan; Jordan Dimock will do the dinner auction; Bill Edwards will coordinate speaker transportation to/from the Portland airport; Carolyn Breece, Terry Fullan, and Tim Wessels will work the registration table. New this year will be an Endowment Breakfast at 7 AM on Saturday. Kenny

YEAR ROUND QUEENS  **We Have Em'**

Olivarez Honey Bees, Inc.

Healthy Queens = Healthy Hives

Big Island Queens
A Division of Olivarez Honey Bees, Inc.



CALIFORNIA
(530) 865-0298

HAWAII
(808) 328-9249

TOLL FREE
(877) 865-0298



1750 Dayton Rd. Chico, CA 95928
Fax (530) 865-5570

 Premium Quality Queens
Produced in the Heart of
Northern California
Since 1963

 **www.ohbees.com**

Williams will explain the Endowment and Frank Eischen will give a 20-minute presentation.

Oregon Master Beekeeper

Carolyn Breece reported a successful Mentor/Instructor Field Day on August 4. We asked mentors and instructors for feedback on our first year with the program, we had educational sessions, and we gave a preview of the Journey level. Congratulations to the nearly 20 people who received their Apprentice Beekeeper Certification!

The Master Beekeeper grant will fund Dr. Dewey Caron's travel expenses to a Bee Health Conference in Washington DC in October. We are looking forward to hearing about his trip!

2012 Donations

OSBA will give the following donations at the fall conference:

\$10,000 to Dr. Ramesh Sagili/OSU research

\$1,000 to Dr. Dewey Caron

\$1,000 to Washington State University/Dr. Steve Sheppard

\$1,000 to agricultural/honey bee-related education (to be awarded at a later date)

Robert Allen motioned to accept the donations for 2012. Del Barber seconded the motion. The board unanimously approved.

Tim Wessels motioned to adjourn the board meeting. Paul Andersen seconded the motion. The meeting adjourned at 6:10 PM.

Respectfully submitted,

Carolyn Breece

CLASSIFIED AD

FOR SALE: For your new crop honey. Used, Open-Top **Metal Drums** (with Lid and Rings), \$9.00 each. If we purchase your honey, we will credit you back for the cost of these drums.

To sell your honey, please contact Nancy Burnett at GloryBee Foods, Inc., 541.689.0913 ext. 132.

To purchase drums, contact the GloryBee Factory Store at 541.689.0913 ext. 138. If interested in multiple drums, please call in advance.

GloryBee Foods, Inc., 29548 B Airport Rd, Eugene OR 97402.

HEAR THEE, HEAR THEE!

Jan Lohman

As you all know already, our OSBA conference is multi-purposed. We are thrilled with the learning that takes place in the meetings and the bee talk that happens in the hallways. BUT another goal that we have is to raise money for research at OSU to keep Ramesh, Carolyn, and the crew busy with projects throughout the year. One way that we accomplish this goal is through our fundraisers at the conference and HERE is where you come in!

Please bring items to the conference. Keep your eye out for bee-related and unusual items. Who wouldn't want a yard gnome with a bee on his shoulder? Or a t-shirt with dancing honey bees? If you have a craft that you enjoy, share it with the group. Or beg a relative to make something for us. Or if you see something that you would like to share, bring it along. Half of the fun is in the giving and enjoying what others bid for your item. Don't bee shy—it is a very worthwhile cause and your way of being part of the fun.

2012 Western Apicultural Society & Washington State Beekeepers Association Joint Conference

October 4 - 6, 2012

Embassy Suites Tukwila, Seattle WA
4 miles north of the SeaTac Airport

Registration: CONFERENCE REGISTRATION FORMS MUST BE RECEIVED, WITH PAYMENT, NO LATER THAN **AUGUST 31st** for *earlybird rate*.

Accommodations: Conference rate is \$119 per night (+ tax & gratuities), full breakfast included. 1-425-227-8844 or 1-800-EMBASSY (Use 'WAS' code to book.)

Registration forms available from WAS treasurer Jim Bach, 509-573-4245 or jcbach@fairpoint.net, in the WAS Journal and on the WAS website

http://groups.ucanr.org/WAS/Conference_Information

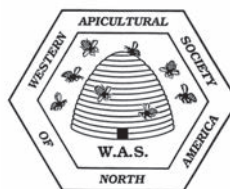
or contact

Jim & Cyndi Smith

253-222-4824

jksmithpe@comcast.net

See you in Seattle!



Oregon State Beekeepers Association 2012 Fall Conference

↻ November 1, 2, and 3, 2012 ↻

Seaside Civic and Convention Center, 415 First Ave, Seaside OR 97138

Individual and Family Registration

Name: _____ Date: _____

Company (if applicable): _____

Complete mailing address: _____

City: _____ State: _____ Zip: _____

Contact phone: _____ email address: _____

Additional names of family members attending: _____

Additional memberships: _____

Event	Cost
Thursday Night Hospitality Room	Complimentary
Full Conference Individual: \$115 Family: \$145	\$
Friday Conference Only Individual: \$75 Family: \$90	\$
Saturday Conference Only Individual: \$75 Family: \$90	\$
Friday Research Luncheon ¹ : \$25 per person	Number attending: _____ \$
Friday Evening Banquet : \$35 per person	Number attending: _____ \$
Saturday Apiculture Endowment Fund Breakfast ² at 7 AM: \$15 per person	Number attending: _____ \$
Annual OSBA Dues : \$25 per person	Number: _____ \$
Exhibitor Fee : \$40 per table	Number of tables: _____ \$
TOTAL Cost	\$

Please make check **payable to OSBA** and mail with this **completed registration form**,
postmarked no later than October 18, to:

Paul Kowash, 5959 SW Taylors Ferry Rd, Portland OR 97219

Note: Hotel reservations are not included in these costs. Special rates are available at the Best Western Ocean View Resort (800.234.8439) and the Inn at Seaside (800.699.5070). Be sure to ask for the *Beekeepers Fall Conference* special room rate when you make your reservation.

¹ The Friday luncheon is limited to the first 150 registrants. For Saturday's lunch, please enjoy your meal at one of the local establishments of your choice.

² The Saturday Apiculture Endowment Fund Breakfast at 7 AM will feature a special presentation by Dr. Frank Eischen and an opportunity to support the endowment.

2012 Oregon State Beekeepers Association Conference

Seaside Civic and Convention Center
Seaside, Oregon

November 1–3, 2012



Join us at the beautiful Oregon Coast!
Register by mail until October 18!



Information updates: www.orsba.org

CONFERENCE: A SURE SIGN OF FALL!

Details are being finalized for the agenda for the fall conference. In the meantime, there are things we may want to consider to prepare.

Prepare to Learn!

Pack your pen, questions, and enthusiasm. Presenters will include the following, as Paul Andersen noted last month:

Dr. Dewey Caron	Dr. Ramesh Sagili
Sue Cobey	Dr. Steve Sheppard
Dr. Larry Connor	Dr. James Tew
Dr. Frank Eischen	Clint Walker
David Hackenberg	

In addition, there will be an alternative tract on queen rearing on Saturday with Sue Cobey and Larry Connor.

Prepare to Go to Bee School!

Pack your curiosity. Thom Trusewicz will explore the world of bees with those who are relatively new to beekeeping.

Prepare to Enter the Honey Show!

Pack your lovely gifts from the bees. Marjie Ehry will take time to judge entries—whether of honey and its many varietals, wax, or



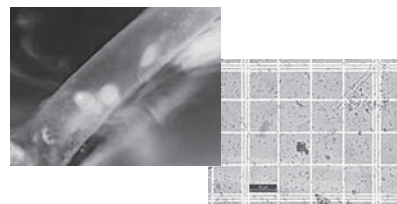
photos. She will use the same categories as the Oregon State Fair and as in conferences in the past. Please note that entries need to be checked in at the conference by 10 AM on Friday morning for the judging. Contact Marjie at 503.434.1894 with any questions.

Prepare to Bring Bee Samples!

Pack your bees. The Oregon State University Honey Bee Lab will be analyzing bee samples for Nosema, tracheal mite, and Varroa mite. Samples need to be collected when bees are alive and preserved in alcohol or a freezer. Samples need to include a fairly large number of bees—200–300 (at least two-thirds a cup).



Left: Fred VanNatta stands by while Emily McSwane-Mock checks the bee samples he brought to the 2011 fall conference. **Below:** Tracheal mite (left) and Nosema (right). We may not want 'em, but many of us got 'em.



Carolyn Breece notes that the Bee Lab will send an empty sample jar on request. The lab will have samples available for demonstrations also, so be sure to check in even if you don't bring samples of your own.

Prepare to Share Your “Stuff”!

Pack “extra” items. The silent and banquet auctions are a staple of the conference. Both raise much-needed funds for honey bee research. All items donated, however large or small, make a contribution. (See “Hear Thee!” on page 11.)




Donations that *made* the silent (left) and banquet (right) auctions during the 2011 fall conference. Any closets to clean?!

Prepare for Shared Experience!

So much of what happens during a conference of most any kind takes place “in between”—between presentations, between vendor tables in the hallways, and between conferences. How often do we find so many people with similar interests—yet such different backgrounds and life experience—all together in one place?

MAGAZINE SUBSCRIPTIONS

Please use the forms provided here, with current pricing information, to subscribe to magazines at the discounted rates offered to OSBA members. Take care to renew subscriptions before they expire to avoid lapses in subscriptions.



ASSOCIATION MEMBER SUBSCRIPTION

SAVE 25%

New Subscriptions and Renewals for OSBA Members during September 2012

Association _____ Secretary's Name _____

Subscriber's Name _____ Address _____

Address _____ City _____

City _____ State, Zip _____

State, Zip _____ Phone _____

Phone _____ U.S. 1 Yr. - \$19.50 2 Yr. - \$37.00 3 Yr. - \$52.15

NEW RENEWAL Canada 1 Yr. - \$33.50 2 Yr. - \$65.00 3 Yr. - \$94.15

(PRICES GOOD THROUGH DEC. 31, 2011) Foreign 1 Yr. - \$41.50 2 Yr. - \$81.00 3 Yr. - \$118.15

Return white copy to: American Bee Journal, 51 S. 2nd St., Hamilton, IL 62341 • Retain yellow copy for your records.



ASSOCIATION MEMBER SUBSCRIPTION

Bee Culture Magazine

New Subscriptions and Renewals for OSBA Members during September 2012

Please Print Clearly

Association _____ Secretary's Name _____

Subscriber's Name _____ Address _____

Address _____ City _____

City _____ State, Zip _____


State, Zip _____ Comments _____

Phone # _____

NEW RENEWAL 1 Yr. - \$21.00 2 Yr. - \$38.00

For Office Use Only
Acct. # _____
Canada - add \$15.00 per year
All other foreign add \$20/year

Return white copy to: Bee Culture, Subscription Dept., P.O. Box 706, Medina, OH 44258
Please discard any other forms. Use only this form. Prices subject to change without notice.



Association Member Subscription Form

Please check one: New Renewal of expired subscription Extension of current subscription

New Subscriptions, Extensions, and Renewals for OSBA Members during September 2012

Name _____

Company _____

Address _____

City/State/Zip _____

I am a member of (assn. name) Oregon State Beekeepers Association

Mail this form with remittance to:

The Speedy Bee
P.O. Box 998 • Jcsup, GA 31598-0998

Allow 4 to 6 weeks for subscription order to be processed.



Special Subscription Rates:

\$13.25 for 1 year

\$25.25 for 2 years

\$34.00 for 3 years

Canada & Mexico add \$3.00 per year for postage

For credit card orders, send number, expiration date and signature on back of this form.  



Oregon State Beekeepers Association Membership Form

The **Oregon State Beekeepers Association** is a nonprofit organization representing and supporting all who have an interest in honey bees and beekeeping. Membership is open to anyone with an interest in bees and beekeeping. You do not need to own bees or reside in Oregon to join. Membership includes the ongoing work of the organization on behalf of the honey bee and beekeeping, a vote in OSBA elections, discounts on publications, placement on the swarm call list, and an annual directory and subscription to *The Bee Line*. For new memberships and renewals, please send check made payable to *OSBA* with this completed form to:

Paul Kowash, 5959 SW Taylors Ferry Rd, Portland OR 97219

Name: _____ **New** ___ **Renewing** ___

Additional name(s) for added memberships at the same address:

Mailing address: _____

City/State/Zip: _____

Telephone number: _____ **email address:** _____

Contact information: The OSBA respects the privacy of members. Please check if you do not want your contact information included in a membership directory sent to OSBA members only: **Do not include contact information** _____

Please also check if you want to share only a portion of your contact information:

Share only mailing address: _____ **phone number(s):** _____ **email address:** _____

Local group, if member: _____

Membership: \$25 per person (\$34 per person outside the US) \$ _____

Voluntary contribution(s):

General Fund \$ _____

Research Fund \$ _____

Total amount enclosed: \$ _____

Thank you!

Snow Peak Apiaries

Custom Wood Shop

All types of supers, including 8-frame,
Cedar top and bottom boards; Frames—all styles
Custom cut to fit your operation

Franz & Audrey Yordy

541.451.3752
Toll free 1.877.530.5882

34769 E Lacombe Dr
Lebanon OR 97355

GloryBee® Beekeeping Supplies

GloryBee carries a wide selection of beekeeping supplies for everyone from the hobbyist beekeeper to the professional. Shop with us online or request our FREE 108-page catalog today.

Equipment • Tools • Containers
Books • Gifts • HoneyStix
Royal Jelly • Bee Pollen • Propolis

Family Owned & Operated Since 1975



www.GloryBee.com • (800) 456-7923

The Bee Line
Newsletter of the Oregon State Beekeepers Association
4207 SE Woodstock Blvd Ste 517
Portland OR 97206

NONPROFIT ORG
US POSTAGE
PAID
PORTLAND OR
PERMIT NO. 2358

Note: For new memberships and to renew, see form on page 15.

*The OSBA Board recently voted to make **all event listings** (up to 15 words) **free**.
Please send events—along with articles, stories, questions, and all the rest!*

Keeping Bees



in Oregon!

The Bee Line

The Bee Line is the official publication of the Oregon State Beekeepers Association. Annual subscriptions to the newsletter are included with membership in OSBA.

Please send news about your bees and your experiences in keeping them, as well as events, corrections, comments, questions, photographs and stories (both from “old” times and “new”), interviews, recipes, and points of view to: Rosanna Mattingly, *The Bee Line*, 4207 SE Woodstock Blvd Ste 517, Portland OR 97206; email: osba.newsletter@gmail.com.

The next issue to be printed will be the October 2012 issue. The deadline for submitting copy is September 10, 2012.

Thank you!

Advertising

Per Issue

Events Listings

All events (15 words) Free

For nonprofit-group events, an additional 30 words (total of 45) in the listing or an article Free

Business Ads

Business card \$10.00

Quarter page \$25.00

Half page \$50.00

Full page \$100.00

Classified Ads (30 words)

Members \$3.00

Nonmembers \$5.00