

---

---

# THE BEE LINE



The Newsletter of the Oregon State Beekeepers Association

---

---

Volume 29, Number 5

June 2004

---

---

## BEEKEEPING ESSAY CONTEST RESULTS

### *WE HAVE A WINNER!*

The American Beekeeping Federation, Inc. has announced that 14-year old Sarah Worthing of Prineville, Oregon is our state's winner of the 2004 4-H essay contest.

Ms. Worthing's winning essay, "Swarming: Ensuring the Endurance of a Species" was the only essay received by the state deadline. It was reviewed by a member of the entomology faculty at Oregon State University and recommended for the national competition. While Ms. Worthing's essay was not the final winner in the national contest, it is a very good paper.

The complete essay is reprinted within this issue of the newsletter. It is well-referenced with an annotated bibliography and shows that Ms. Worthing not only writes well, but also knows her subject. Homesteading is her favorite hobby, and she hopes to eventually become a veterinarian.

Ms. Worthing will receive a letter from the OSBA, recognizing her achievement.

Congratulations, Sarah Worthing!

---

## A NEW LOGO FOR THE OSBA!

It's a contest, and it's open to all OSBA members. We are looking for a new design for the association, and would like to see design ideas for stickers and mailing labels from as many people as possible who wish to participate. Please submit your design to either Jan Lohman or Mary Moss. Their mailing addresses can be found inside this newsletter. Five finalists will be chosen, and the winner will be selected and announced at the Fall Conference.

## LAST CALL FOR MEMBERSHIP LIST PUBLICATION --YES or NO--

As has been mentioned frequently during the past few months, the OSBA plans to publish its membership list as a separate insert in an upcoming issue of this newsletter and also to distribute at the Fall Conference. Membership listings will include name, business name (if we have it), address and telephone number. E-mail addresses will not be included.

Please note that the OSBA will not be sharing its mailing list with vendors, advertisers, or others for commercial purposes. It is intended for use only by OSBA officers and members.

If you do NOT wish to have your name and other information published on this list, you need to fill out the "DECLINE" form located within this newsletter and mail it to either Jan Lohman or Phyllis Shoemake. The deadline for receiving these forms is **June 30, 2004**.

*If we don't hear from you, we will assume that you wish your name to be included on the list.*

---

## WHAT'S INSIDE:

- \*President's Message
  - \*Beekeeping Ethics Document
  - \*Winning 4-H Beekeeping Essay
  - \*Monthly Beekeeping Tips
  - \*Api Life VAR Details for Oregon
  - \*Rare/Old Beekeeping Books
-

# Oregon State Beekeepers Association

The Bee Line is the official publication of the Oregon State Beekeepers Association and is published ten times a year. Subscriptions are included with OSBA membership.

To join the OSBA, complete the membership application in this issue and send with payment to: **Phyllis Shoemake, 1702 Toucan Street NW, Salem, OR 97304.**

Editorial Offices: Send news, announcements, letters, comments and advertising to:  
Mary Moss, Editor  
4539 SW Anderson Road, Forest Grove, OR 97116  
Tel: (503) 357-4782

E-mail: [OSBA@verizon.net](mailto:OSBA@verizon.net)

**OSBA Official Web Site: [orsba.org](http://orsba.org)**

©2004 Oregon State Beekeepers Association

## ADVERTISING RATES

Business ads, per issue:

Business-card size:	10.00
Quarter-page:	25.00
Half-page:	50.00
Full-page:	100.00

Copy, art and payment must be submitted by the 15th of the month prior to publication.  
Contact the Editor for any special requirements and mechanical information.

Classified Ads, 30 words, per issue

OSBA members	\$3.00
Non-members	\$5.00

**PACKAGES ARE COMING!** Reserve your order NOW - we feature the New World Carnolian Project queens - rated as one of the *top 3 queens in the US* by the Honeybee Improvement Project!

# Luckiamute Bee

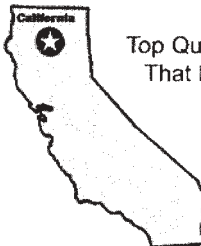
503-838-2328  
11260 Simpson Road, Monmouth, OR 97361  
fax: 503-838-6040 • e: [beetools@aol.com](mailto:beetools@aol.com)  
WWW - <http://members.aol.com/beetools>

Check out our new Website! It has our complete catalog, used equipment, and all sorts of tips, links and information for beekeepers



A Family Tradition in Northern California

## Homer Park Italian Queens



Top Quality — All Around Queens  
That Perform Well In All Areas



50 queens or more per shipment  
Spring - Summer . . . . . \$10.50  
Shipping extra

- Gentle Bees
- Early Buildup
- High Productivity
- Good Acceptance

QUEENS & NUCS  
PH. 530•549•3555

PACKAGE BEES  
PACKAGES ARE NOT MAILED  
PH. 530•549•3500



**WOOTEN'S GOLDEN QUEENS**  
11189 DESCHUTES ROAD  
PALO CEDRO, CA 96073  
FAX 530•549•3624  
Toll Free 888•565•8439



# President's Message

by Kenny Williams

At the end of April, the OSBA Board met in Salem, with a long agenda of items to cover. Some of these will be covered in separate articles provided by individual members dealing with those issues. I will mention two others here.

Last fall I received a letter from the National Honey Board informing beekeepers that the United States Food & Drug Administration will now require food processing facilities to register with them under the Bio-Terrorism Act of 2002. As we beekeepers extract and store honey until sold, it appears that we are included. The letter contained a website (<http://www.cfsan.fda.gov/~furl/ffquick.html>) for registering on-line, but when I attempted this I found myself involved in a long, time-consuming activity, which I finally opted out of in favor of writing their ordinary mail address for printed forms to fill out. These arrived several weeks later and took about 15 minutes to fill out. That mailing address, available at the website, is: USDA / 5600 Fishers Lane, HFS-681 / Rockville, MD 20857.

It's not too early to be thinking about the Fall Conference. Since it's going to be at the Coast this year, the possibilities are endless. You might want to volunteer to help out--that's always appreciated. It's a great chance to hobnob with your fellow beekeepers. Don't forget the big bonfire!

Regarding our on-going efforts to secure funding for the position of a honeybee entomologist at OSU, several members have succeeded in persuading some growers they deal with to call or write the College of Agriculture at OSU to emphasize how important a strong beekeeping industry is to their own business. These efforts are important, as some of these growers are key players in Oregon's agriculture. OSU, at this stage, is compiling a budget to submit to the next legislative session. It may be some time before we know where all this may lead.

Meanwhile, all the warm and settled weather this year has accelerated plant activity and the bees along with it. This could be a "super" year (pun intended).





*Everything  
for the Beekeeper*

Call our branch offices: Pat in Fresno or John in Chico  
for fast courteous service. *Free Full Color Catalog*

<p>PO Box 2837 2765 South Golden State Blvd. Fresno, CA 93745 Phone (559) 495-0230 Fax (559) 495-0232 Toll Free 1-877-432-3268</p>	    	<p>15 C Valley Court Chico, CA 95973 Phone (530) 893-0921 Fax (530) 893-0922 Toll Free 1-877-332-3268</p> <p style="text-align: right;">Website: <a href="http://www.dadant.com">www.dadant.com</a></p>
------------------------------------------------------------------------------------------------------------------------------------------------------------	---------------------------------------------------------------------------------------------------------------------------------------------------------------------------------------------------------------------------------------------------------------------------------	-----------------------------------------------------------------------------------------------------------------------------------------------------------------------------------------------------------------------------

## Snow Peak Apiaries

Custom Wood Shop  
All types of supers, including 8 frame,  
Cedar top and bottom boards; Frames-all styles  
Custom cut to fit your operation

**Franz & Audrey Yordy**

(541) 451-3752

Toll free 1-877-530-5882

34769 E. Lacombe Dr.

Lebanon, OR 97355

# ETHICS IN BEEKEEPING

by Harry Vanderpool

At the O.S.B.A. conference held in Salem in 2002, a question arose as to whether the association should establish "ethics" for Oregon beekeeping.

Since then, our news media has published many examples of "ethics" violation horror stories. Therefore, many members have expressed an interest in the idea of establishment of guidelines that are supported by the membership, but are not favorable to the label "ethics".

The title, "Guidelines for O.S.B.A. members" seems to be better accepted.

It is hoped that beekeepers at large would also refer to the guidelines.

This matter will be on the table at the business meeting at the fall conference on October 29<sup>th</sup> for discussion and possible vote.

Please give this some thought and discuss it with fellow O.S.B.A. members.

For background on this project, consult the May 2003 Beeline or go to <http://www.orsba.org/download/May03.pdf>

Please E-mail your ideas and comments to [Shallotman@yahoo.com](mailto:Shallotman@yahoo.com)

Remember, these are guidelines. They are there for reference. There will be no enforcement of these guidelines; the O.S.B.A. isn't telling you what to do, or how to do it.

The following is the rough draft as of today:

## Oregon State Beekeepers Association Guidelines for Beekeeping

The Oregon State Beekeepers Association has established the following set of priorities for ethical beekeeping standards that promotes and supports the industry.

It is hoped that members would take an interest in and adhere to the following sets of guidelines. Beekeepers should insure that each of the following priorities are addressed in the order listed prior to attending to following priorities.

### Outline of Priorities

#### Safety Is 1<sup>st</sup>

Public, & beekeeper safety is a top priority.

This includes but is not limited to:

- A) Care in hive transport & placement.
- B) Vehicles & machinery fit for use.
- C) Employee safety management.
- D) Product safety.
- E) Colony health maintenance.
- F) Training for new beekeepers.

#### Quality Is 2<sup>nd</sup>

Quality standards affect the public, beekeepers and the industry.

This includes but is not limited to:

- A) Strength and suitability of hives for pollination.
- B) Hive product standards consistent with local ordinance.
- C) Colony health maintenance.
- D) Training for new beekeepers.
- E) Quality of work experience for employees.
- F) Thoughtful interaction and consideration for fellow beekeepers.
- G) Professional conduct and behavior while operating as a beekeeper.

#### Production Is 3<sup>rd</sup>

Once the safety and quality issues have been thoroughly addressed, beekeepers are in a good position for healthy and productive business.



# NORTHWEST BEEKEEPING TIPS - June

By Harry Vanderpool, WVBA

Nectar flow is at its peak this month in the Willamette Valley. Watch your honey supers closely; they can be filled rapidly when conditions are right. Studies have shown that supering ahead of the need for space increases honey production in colonies.

If you have comb to draw and can sacrifice a bit of honey production, this is the month to make it happen. You can place supers with frames of foundation on your largest colonies, and they will quickly produce the prettiest comb you can imagine.

Replace old dark or damaged comb with frames of foundation.

Buy some queens and start up some small nucs. Queens can sometimes be in short supply late in the year. Requeening late in the year can be testy also. Starting small nucs now will cover your late queen problems.

You say that you don't have any nuc boxes? Buy nuc boxes. Put them to work.

Examine colonies every ten to fourteen days.

If you find hives with the beginnings of swarming tendency, remove the queen cells and rotate brood boxes. Pull a couple of frames of sealed brood and fortify weaker hives. Place foundation in their place. Give those juveniles a serious job to do—draw wax!

If you find sealed queen cells of good conformation, place the frame with the cells in a nuc box with a frame of feed, and a frame of pollen. Shake as many young bees into the nuc as you can from the parent hive. Make sure you do NOT shake the parent queen into the nuc! Stuff some grass into the entrance and set it aside in your yard or in an area with drone populations. Feed light syrup with fumagillin. Check the nuc every 14 days for your new queen and eggs. Track these queens for vigor. Just do not make this your *primary* source for queens.

Provide a steady supply of clean water.

Hives need ventilation during hot weather. Honey in the comb will dry faster, and the bees will not expend as much energy cooling a crowded hive if there is adequate ventilation.

Continue to be on the lookout for American Foulbrood.

Start sampling colonies for mite load. On the Internet, you'll find that [www.greatlakesipm.com](http://www.greatlakesipm.com) has the good old sticky boards that you need for a very reasonable price.

Take a walk through your honey house and take an inventory of chores and supplies that you will need soon.

Respect yourself and others with the beekeeping community by your attendance at your regional association's monthly meeting.

Your story could be here, right on this page! We're always looking for interesting tales of beekeeping, funny bee-related adventures, and good advice. If you have something along those lines to contribute, it's time to stop holding back--contact the Editor today. See Page 2 for contact information. We'll be glad you did!

## GLORYBEE

P.O. Box 2744 Eugene, OR 97404  
 Ph: 541-689-0913 Fax: 541-689-9692  
 Toll Free: 1-800-Glorybe (456-7923)  
 Email - [sales@glorybee.com](mailto:sales@glorybee.com) - [www@glorybee.com](http://www@glorybee.com)

**BUYING ALL GRADES NEW CROP HONEY**

Call for prices

Free Bee Supply Catalog  
 1-800-Glorybe (456-7923)



## Rare Old Bee Books Online

### The Phillips' Beekeeping Collection at Cornell's Albert R. Mann Library is one of the largest and most complete apiculture libraries in the world.

The Hive and the Honey Bee Collection grew out of a presentation on the Phillips collection at the 2002 Eastern Apiculture Society conference and is something of a digital child of that print collection. At present, it consists of the full text of ten rare books from the Phillips Collection, and each book is fully searchable.

Here is the list of books that have so far been made available online at [bees.library.cornell.edu](http://bees.library.cornell.edu):

- **Alley, Henry.** • [The beekeeper's handy book, or, Twenty-two years' experience in queen-rearing, containing the only scientific and practical method of rearing queen bees, and the latest and best methods for the general management of the apiary](#), Henry Alley, Wenham, Mass. : 1883.
- **Doolittle, Gilbert M.** • [Scientific queen-rearing as practically applied; being a method by which the best of queen-bees are...](#), T. G. Newman, Chicago : 1889.
- **Dzierżon, Jan.** • [Dzierżon's rational bee-keeping, or, The theory and practice of Dr. Dzierżon](#), Houlston & sons, London : 1882.
- **Huber, François.** • [New observations on the natural history of bees](#) Printed for J. Anderson ; Edinburgh : 1806.
- **Langstroth, L.L.** • [Langstroth on the hive and the honey-bee; a bee keeper's manual...](#) Hopkins, Bridgman, Northampton : 1853.
- **Miller, C. C.** • [Fifty years among the bees](#) A. I. Root Co., Medina, Ohio : 1911.
- **Munn, W. Augustus.** • [A description of the bar-and-frame hive](#) John Van Voorst, London : 1844.
- **Phillips, Everett Franklin.** • [Beekeeping](#) [1915?]
- **Quinby, M.** • [Mysteries of bee-keeping explained; being a complete analysis of the whole subject:...](#) C. M. Saxton & Co., New York : 1853.
- **Root, A. I.** • [The A B C of bee culture; a cyclopaedia of everything pertaining to the care...](#) A.I. Root, Medina, Ohio : 1879.

### Background

In 1925, a Cornell professor of apiculture named E. Franklin Phillips set out to create a major repository of literature on bees and beekeeping. He envisioned this library as an "accessible storehouse of our knowledge of bees and beekeeping." By 1926, Phillips had persuaded over 223 people from twenty-nine states and twenty-six foreign countries to donate thousands of books and pamphlets, and the Phillips Beekeeping Collection at Cornell was born.

Perhaps Phillips' biggest coup was his ingenious plan for raising the money necessary for creating the library's endowment: he convinced hundreds of New York state beekeepers to set aside one of their hives for the library. When a hive had raised \$50, the beekeeper's obligation was completed.



## Mann Lake Ltd.

*We carry the products to cover all your  
beekeeping and candlemaking needs.*



**We offer fast,  
efficient,  
courteous service  
at the most  
competitive price.**

*Our knowledgeable  
staff is ready to  
serve you!*

**Mann Lake Ltd.**  
501 S. 1st St.  
Hackensack, MN 56452-2001  
Fax: 218-675-6156  
[beekeeper@mannelakeltd.com](mailto:beekeeper@mannelakeltd.com)

- Woodenware
- Rite-Cell® Foundation
- Clothing for Beekeeping
- Processing Equipment
- Containers
- Bee Reference Books
- Candle Flex Molds®
- Candle Making Supplies
- Candle Reference Books

**1-800-880-7694**  
Call for *FREE* Catalog  
[www.mannelakeltd.com](http://www.mannelakeltd.com)

The idea for The Hive and the Honeybee emerged following the 2002 conference of the Eastern Apiculture Society, which was held that year on the Cornell University campus in Ithaca. In the two years since then, individual beekeepers and beekeeping organizations from around the country have contributed funding to make some of the greatest works on beekeeping available via the Internet.

The Hive and the Honeybee now consists of the full text of ten books from the Phillips Collection, chosen by a team of scholars for their historical importance and usefulness to beekeepers today. The collection will grow as funding allows, and it is hoped that eventually it will contain every major pre-1925 beekeeping work in the English language. The texts in this digital collection are fully searchable, and will also eventually become part of the Core Historical Literature of Agriculture (CHLA).

How fitting E.F. Phillips would find it that beekeepers themselves are playing a central role in the formation of another apiculture library. And how thrilled he'd be at the way the Internet will make a storehouse of beekeeping knowledge accessible to the world.

### Acknowledgements

Mann Library would like to extend special thanks to Mike Griggs and the Eastern Apiculture Society for making the creation of The Hive and the Honeybee possible.

Funding for the development of this digital collection was provided by gifts from the Eastern Apiculture Society, the Chemung Valley Beekeepers Association, the Fingerlakes Beekeepers Club, the New Hampshire Beekeepers Association, the Southern Adirondack Beekeepers Association, the Susquehanna Beekeepers Association, the Warren County Beekeepers Association, and a number of generous individuals. To make a gift toward The Hive and the Honeybee Collection, or to find out more about supporting this growing collection, please contact Janet McCue, Director, Albert R. Mann Library (tel.: (607) 255-2285; email: [jam7@cornell.edu](mailto:jam7@cornell.edu)).

## ApiLife Var Now Available in the Tri-States

by Harry Vanderpool

Oregon Beekeepers now have a powerful tool in their ongoing battle with chemical resistance in varroa mites.

Effective February 5, 2004, The Environmental Protection Agency granted section 18 status to the Oregon Department of Agriculture for the use of the formulated product ApiLife Var containing thymol, eucalyptus oil, and L-menthol in beehives to control varroa mites.

The Oregon State Beekeepers Association received a fax announcing the exemption from Mr. David L. Priebe of the O.D.A. Pesticides Division. Mr. Priebe worked in concert with officials in Washington and Idaho to gain regional approval.

Quickly, this new product made its way onto bee supply shelves and is readily available.

ApiLife Var is a small tablet soaked with the essential ingredients, and sold in a small sealed package. Although the ingredients sound relatively safe, ones first use of the product is a real eye opener. A proper respirator and rubber gloves are listed for personal protective equipment, among others, when using this product.

As per the E.P.A., the following treatments are specified:

Two treatments per year may be made. A treatment (3 tablets) consists of the following:

Take one tablet and break into four pieces. Place pieces on the top corners of the hive body. Avoid placing pieces directly above the brood nest. After 7 – 10 days, replace with a fresh tablet broken into pieces as above. Repeat procedure again, 7 – 10 days later and leave last tablet for 12 days, then remove.

To prevent the bees from gnawing the tablet either enclose each piece of tablet in an envelope of screen wire ((8 mesh/inch) or place the uncovered pieces above a sheet of metal screen that prevents bees from contacting it.

The E.P.A. specifies that honey supers may not be placed until after 30 days have lapsed from removal of the tablets. Also the product is not to be used during a honey flow (period!).

Because this is a fumigation of beehives, it is temperature sensitive. The E.P.A. directs, "Do not use ApiLife Var at temperatures above 90 deg F" and goes on to state that temperatures below 54 deg F may result in less control of varroa mites.

A maximum of 117,000 ApiLife tablets are to be used in Oregon for this exemption.

Oregon beekeepers owe a debt of gratitude to Mr. David Priebe and Dr. Eric Johansen of Washington for all of their hard work on this valuable tool.

*The Oldest Beekeepers Supply Store in the Pacific NW!*

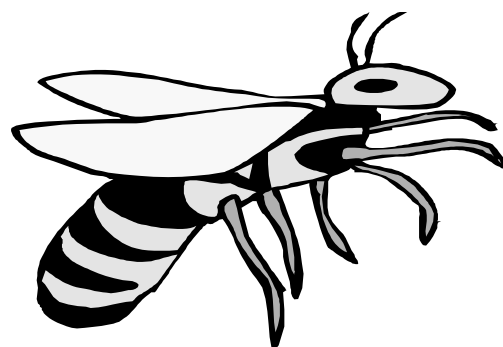


E-mail: [ruhlbeesupply@yahoo.com](mailto:ruhlbeesupply@yahoo.com)

**RUHL BEE SUPPLY**  
Beekeeping Supplies - Honey- Bees  
[www.ruhlbeesupply.com](http://www.ruhlbeesupply.com)

17845 SE 82nd Drive  
Gladstone, OR 97027

The Johnson Family  
(503) 657-5399



4-H Essay - page one



4-H Essay - page two

4-H Essay - page three

4-H Essay - page four

4-H Essay - page five (bibliography)

# Who's Who in the OSBA Resource Guide

## OFFICERS

### **President**

Kenny Williams  
20367 Long Road  
Blodgett, OR 97326  
541-456-2631

### **Vice President**

Harry Vanderpool  
7128 Skyline Rd. S.  
Salem, OR 97306  
503-399-7390/503-510-6090  
shallotman@yahoo.com

### **Co-Sec/Treas.**

Jan Lohman  
77225 Colonel Jordan Road  
Hermiston, OR 97838  
541-567-3209  
vazzafrm@uci.net

### **Co-Sec/Treas.**

Phyllis Shoemake  
1702 Toucan St. NW  
Salem, OR 97304  
503-364-8401  
shoe2@open.org

### **BEELINE Editor**

Mary Moss  
(See Page 2 for contact information)

## REGIONAL REPS

### **Columbia Basin**

Debbie Morgan 541-298-5719  
3800 Benson Road  
The Dalles, OR 97058

### **Eastern Oregon**

Jordan Dimock  
2635 Mitchell Butte Road  
Nyssa, OR 97913  
(541) 372-2726

### **Metropolitan Area**

Chuck Sowers  
26730 S. Hwy. 170  
Canby, OR 97013-9373  
503-266-1740  
Sowers@canby.com

### **North Coast/Webmaster**

Thom Trusewicz  
90041 Logan Rd.  
Astoria, OR 97103  
503-325-7966  
ccbee@intergate.com

### **South Coast**

Joann Olstrom  
3164 Maple Court  
Reedsport, OR 97467  
541-271-4726

### **Southern Oregon**

Not yet established  
**Willamette Valley**  
Fritz Skirvin  
6694 Rippling Brook Dr. SE  
Salem, OR 97301  
503-581-9372

## RESOURCES

Dr. Michael Burgett  
Dept. of Horticulture,  
4017 Ag & Life Sciences  
OSU, Corvallis, OR 97331  
(541) 737-4896 --Call Early  
burgettm@bcc.orst.edu  
Jim Cramer Dept. of Agriculture  
635 Capitol Street NE  
Salem, OR 97310-0110  
503-986-4620  
www.oda.state.or.us/oda.html

**Webmaster: Thom Trusewicz**  
(See North Coast Information)

## REGIONAL ASSOCIATIONS

### **Clatsop County**

Meets 7 pm Wed., even # months  
Extension Office, 2001 Marine Dr.  
Astoria

Pres: Thom Trusewicz  
503-325-7966

VP: Michal Bunch 503-458-5361

Sec/Treas: Jennifer Caisse  
503-458-5361

### **Coos County**

Meets 7:30 pm third Friday (except  
Dec.) Coquille Annex, Coquille  
Pres: Joe Goularte 541-759-4665

VP: Chuck Baim 541-347-9654  
Sec: Jackie Bain-Bowen 541-572-  
5718

Treas: Chuck Howard 541-267-  
3063

### **Lane County**

Meets 7:30 pm third Tuesday  
Santa Clara Community Center  
2615 River Road, Eugene  
Pres: Mike Harrington 541-689-  
8705 -- mdharr@ix.netcom.com

VP: Susan Dolvin  
E-Mail: a51301@access4less.net  
Treas: Nancy Ograin 541-935-  
7065 - woodrt@pacinfo.com  
Sec/Ed: Katharine Hunt  
541-607-0106  
cwhunt@oregon.uoregon.edu

### **Portland Area**

Meets 7 pm second Thursday  
Housing Authority of Clackamas  
Cty., 13930 S. Gain, Oregon City  
Pres: Sam Hutchinson  
503-829-7744  
samh@molalla.net

VP: John Keeley 503-632-3682  
keeley@bctonline.com

Sec: Paul Hardzinski  
503-631-3927

Treas: Jeanette Wyman  
503-630-7790

### **Southern Oregon**

Meets 7:30 pm first Monday  
S.O. Research & Extension Center  
569 Hanley Rd., Central Point  
President: Stan Kee 541-664-3238

VP: Brian Bolstad  
541-512-2364

### **Tillamook County**

Meets 7 pm first Thursday  
5005 Third Street, Tillamook  
Forestry Building  
President: Bob Allen 503-322-3819  
VP: Terry Fullan 503-368-7160  
tfullan@nehalem.tel.net  
Sec/Treas: Wayne Auble

### **Tualatin Valley**

Meets 7:30 pm last Friday  
OSU Extension Office, CAPITAL  
Center Entrance D-1 18640 NW  
Walker Rd. #1400, Beaverton  
Pres: Todd Balsiger 503-648-2211  
toddbalsiger@msn.com  
VP: Terry Parker 503-632-3305  
Sec: Dan Hiscoe 503-662-4502  
hiscoe@hurrah.com  
Treas: Trudy Gissel 503-429-6603

### **Willamette Valley**

Meets 7:00 pm fourth Monday  
Building 34, Room A  
Chemeketa Community College,  
Salem  
Pres: Susan Rauchfuss (503) 391-  
5600, smokfoot@cyberis.net  
VP: Mike Rodia 503-364-3275  
drodia@yahoo.com  
Treas: Ken Kite 503-769-2941  
kiteman49@hotmail.com  
Sec: Evan Burroughs 503-585-5924  
n7ifj@quest.net

**HEITKAMS' HONEY BEES**



PAT, RUSSELL & CRAIG HEITKAM  
4700 FIRST AVENUE • ORLAND, CA 95963  
BUS. 530-865-9562 • FAX 530-865-7839  
Email: Russell.Heitkam@gte.net

Queens, Bees, Honey & Pollination

**THE ESSENTIAL OIL COMPANY**



**Pure Aromatherapy Grade Essential Oils**  
Great Products for Bee Keepers!  
• Menthol • Peppermint  
• Spearmint • Wintergreen  
• Lemongrass

Mention this ad and receive an additional 10% off your first order!

The Essential Oil Company  
1719 SE Umatilla St.  
Portland, OR 97202

Call for your FREE catalog today!  
Phone: 800-7295912 Fax: 800-825-2985  
Email: [order@essentialoil.com](mailto:order@essentialoil.com)  
<http://essentialoil.com>

Have you visited the OSBA Website? It's a busy and very informative place, and one you'll want to bookmark or place on your "Favorites" list.

Visit today: **ORSBA.org**

### Membership and Publications

Membership in the Oregon State Beekeepers Association is open to anyone who has an interest in bees and beekeeping. You do not need to own bees or reside in Oregon to join. OSBA membership is \$20 per person and includes a vote in OSBA elections, discounts on other publications and ten issues of *The Bee Line*. Membership outside the US is \$29.

Name \_\_\_\_\_

Address: \_\_\_\_\_

City/State/Zip \_\_\_\_\_

Telephone \_\_\_\_\_ Email: \_\_\_\_\_ Cell: \_\_\_\_\_

Branch Association\* \_\_\_\_\_

Additional Voluntary Contribution \$ \_\_\_\_\_ (indicate if for Research or General Fund)

Please note: May we include your name/address in a membership list that will be given to members only? Yes / No

If you circled Yes, please circle any information on the above form that you do not want included on the list. The OSBA respects the privacy of their members and will never sell any information supplied.

Start your savings now! Get a discount on the following subscriptions through the OSBA:

<i>American Bee Journal</i>	_____ 1 yr. \$17.20	_____ 2 yrs. \$32.75	_____ 3 yrs. \$46.05
<i>Bee Culture</i>	_____ 1 yr. \$17.00	_____ 2 yrs. \$32.00	Outside US postage add \$15/yr.
<i>The Speedy Bee</i>	_____ 1 yr. \$13.25	_____ 2 yrs. \$25.25	

\*If you are a member of an OSBA Branch Association, make your check payable to that Branch and attach this form. The Branch Association Treasurer should submit this form and a check to OSBA, retaining \$1 for the Branch Association. If you are not a member of a Branch Association, make checks payable to OSBA and send this form with payment to:

**Phyllis Shoemaker, 1702 Toucan Street NW, Salem, OR 97304.**

# Classified Ads

Classified advertising rates per issue: 30 words, per issue: OSBA members, \$3.00, non-members \$5.00. Copy and payment must be received by editor by the 15th of the month prior to publication.

\*\*\*\*\*

**CHECK YOUR MAILING LABEL: If the label is highlighted your membership is due to expire and this is your friendly renewal notice. Thank you.**

NONPROFIT ORG  
US POSTAGE  
PAID  
YAMHILL OR  
PERMIT NO. 23

**The Bee Line**  
Newsletter of the Oregon State Beekeepers Association  
Mary Moss, Editor  
4539 SW Anderson Rd.  
Forest Grove, OR 97116  
Address Service Requested

DEAR MEMBERS:

As noted on the front page of this issue, we are developing a MEMBERSHIP LIST for distribution to our members only.

If you do NOT wish to have your name, address, and telephone number to be included on the list, please fill out the form at the bottom of this page and send it to one of the people listed below.

**The deadline for receipt of these forms is June 30, 2004.** If we do not receive your form by then, we will assume that you are approving the inclusion of your name and information on the list.

Return this form to: OSBA  
Jan Lohman  
77225 Colonel Jordan Road  
Hermiston, OR 97838  
*fax: (541) 567-9611*

or

Phyllis Shoemake  
1702 Toucan St. NW  
Salem, OR 97304  
*E-mail: Shoe2@open.org*

---

Name\_\_\_\_\_

Mailing Address\_\_\_\_\_

City/State/Zip\_\_\_\_\_

Telephone\_\_\_\_\_Fax \_\_\_\_\_Cell#\_\_\_\_\_

Branch Association\_\_\_\_\_

**NOTE: We will not include e-mail addresses on the mailing list.**

---